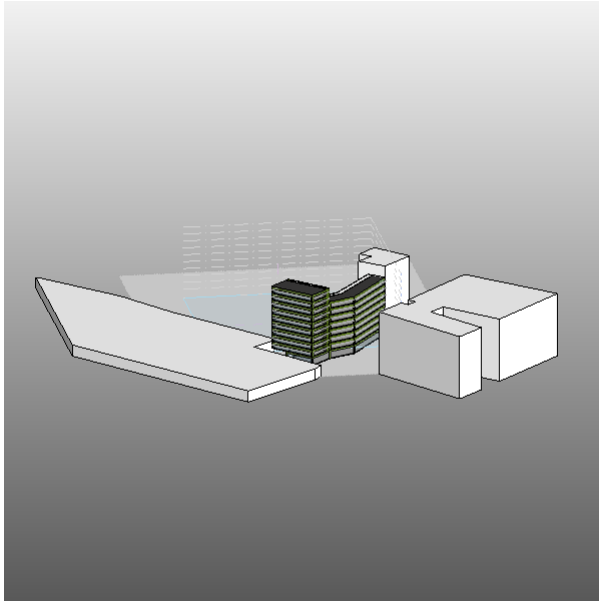


Autodesk®

Tesina Prog.Assistita Energy Analysis

Analyzed at 7/8/2012 9:33:11 PM
Version 2013.0.25.942(DOE-2.2-44e4)

Mass



Building Performance Factors

Location:	Via Assisi, 00181 Roma, Italia
Weather Station:	160240
Outdoor Temperature:	Max: 37°C/Min: -2°C
Floor Area:	4,773 m ²
Exterior Wall Area:	4,642 m ²
Average Lighting Power:	7.53 W / m ²
People:	162 people
Exterior Window Ratio:	0.31
Electrical Cost:	\$0.28 / kWh
Fuel Cost:	\$1.41 / Therm

Energy Use Intensity

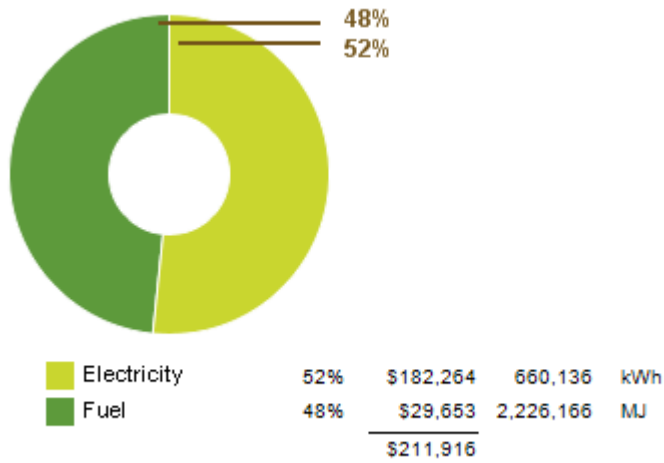
Electricity EUI:	138 kWh / sm / yr
Fuel EUI:	467 MJ / sm / yr
Total EUI:	965 MJ / sm / yr

Life Cycle Energy Use/Cost

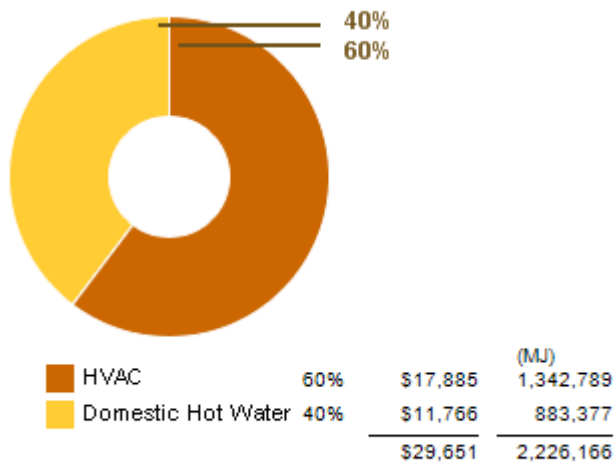
Life Cycle Electricity Use:	19,804,107 kWh
Life Cycle Fuel Use:	66,784,983 MJ
Life Cycle Energy Cost:	\$2,886,301

*30-year life and 6.1% discount rate for costs

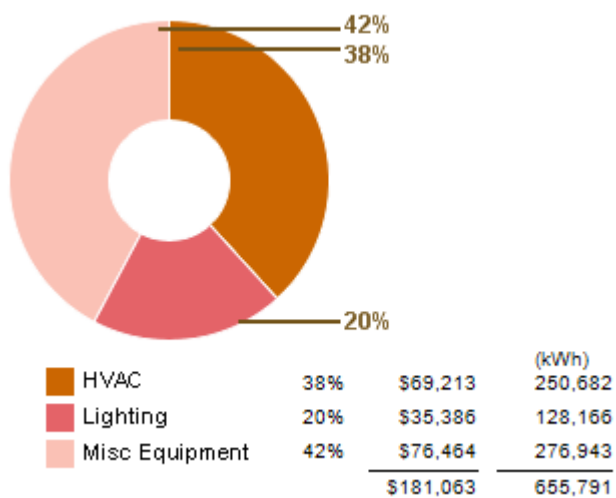
Annual Energy Use/Cost



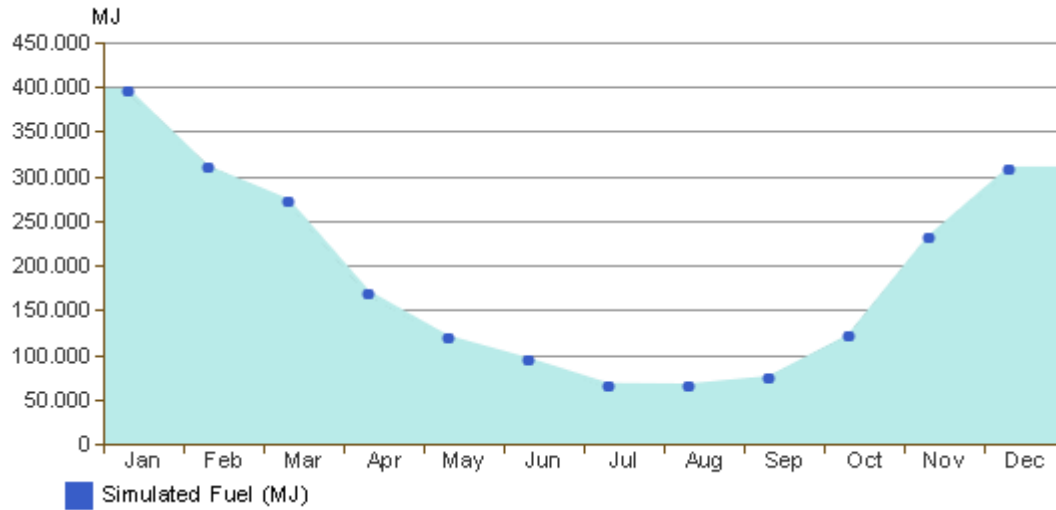
Energy Use: Fuel



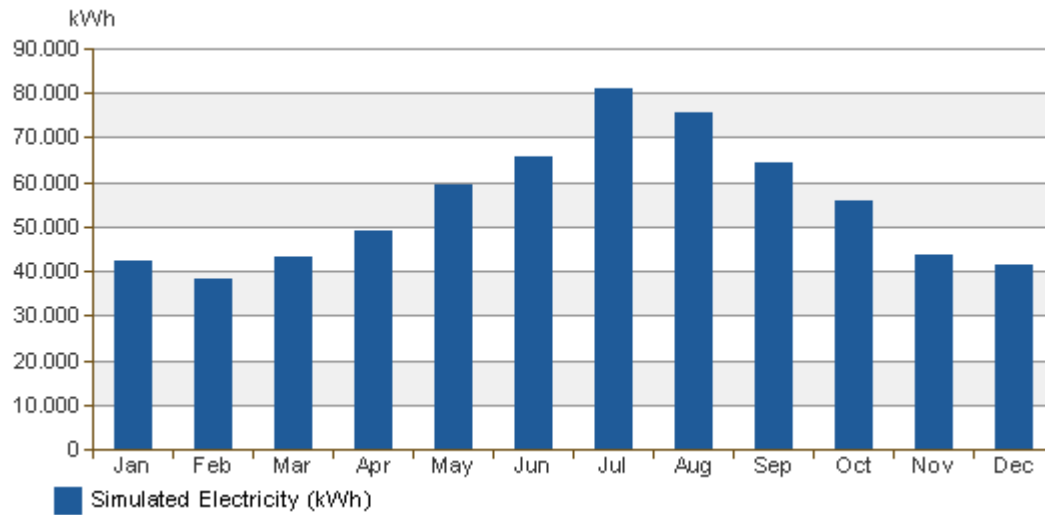
Energy Use: Electricity



Monthly Fuel Consumption



Monthly Electricity Consumption



© Copyright 2011 Autodesk, Inc. All rights reserved. Portions of this software are copyrighted by James J. Hirsch & Associates, the Regents of the University of California, and others.

Revit Conceptual Energy Analysis Data