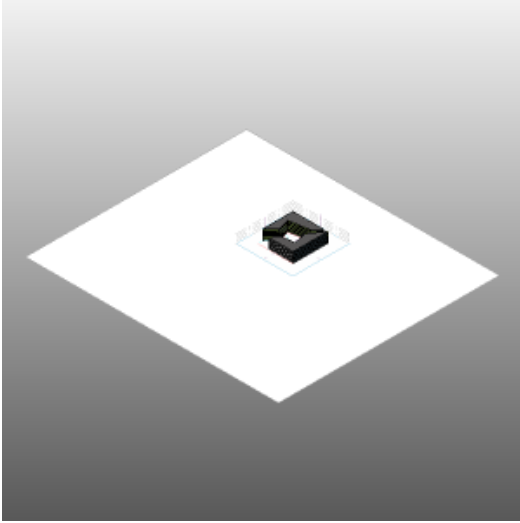


Project14

pal,meri

Analyzed at 6/18/2012 6:33:02 PM

Mass



Building Performance Factors

Location:	Via Giuseppe Belluzzo, 00149 Roma, Italia
Weather Station:	160000
Outdoor Temperature:	Max: 35°C/Min: -2°C
Floor Area:	7,123 m ²
Exterior Wall Area:	4,832 m ²
Average Lighting Power:	10.87 W / m ²
People:	329 people
Exterior Window Ratio:	0.23
Electrical Cost:	\$0.28 / kWh
Fuel Cost:	\$1.41 / Therm

Energy Use Intensity

Electricity EUI:	159 kWh / sm / yr
Fuel EUI:	94 MJ / sm / yr
Total EUI:	667 MJ / sm / yr

Life Cycle Energy Use/Cost

Life Cycle Electricity Use:	34,038,270 kWh
Life Cycle Fuel Use:	20,017,876 MJ
Life Cycle Energy Cost:	\$4,387,731

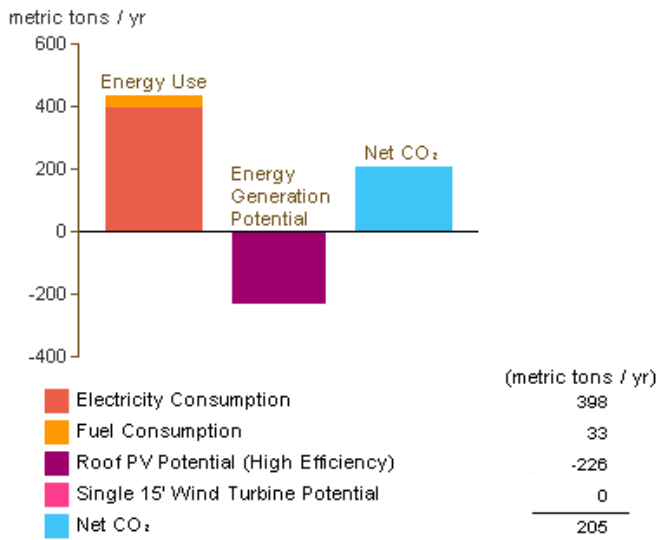
*30-year life and 6.1% discount rate for costs

Renewable Energy Potential

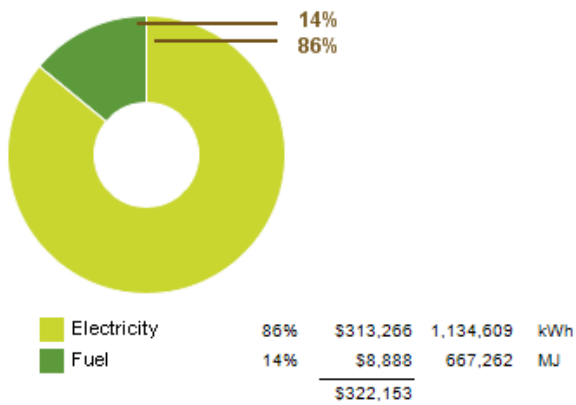
Roof Mounted PV System (Low efficiency):	214,395 kWh / yr
Roof Mounted PV System (Medium efficiency):	428,790 kWh / yr
Roof Mounted PV System (High efficiency):	643,185 kWh / yr
Single 15' Wind Turbine Potential:	1,054 kWh / yr

*PV efficiencies are assumed to be 5%, 10% and 15% for low, medium and high efficiency systems

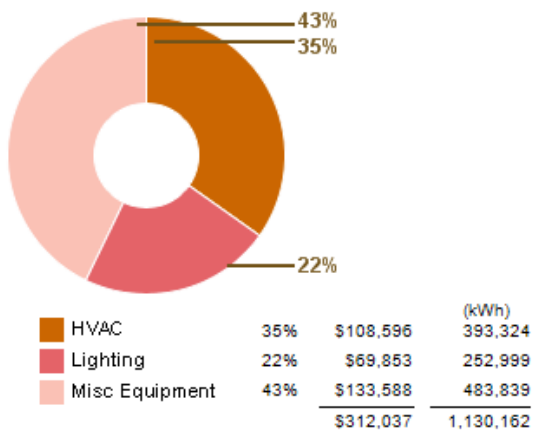
Annual Carbon Emissions



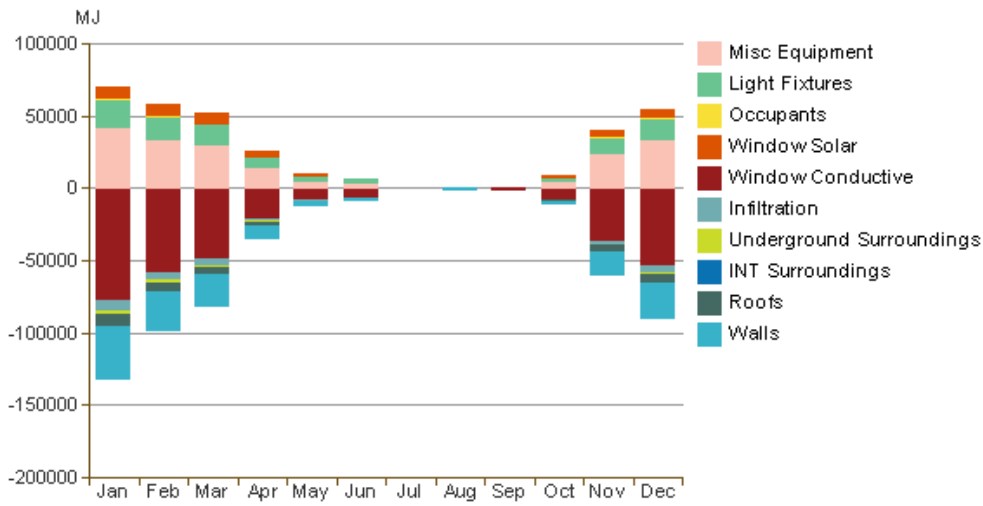
Annual Energy Use/Cost



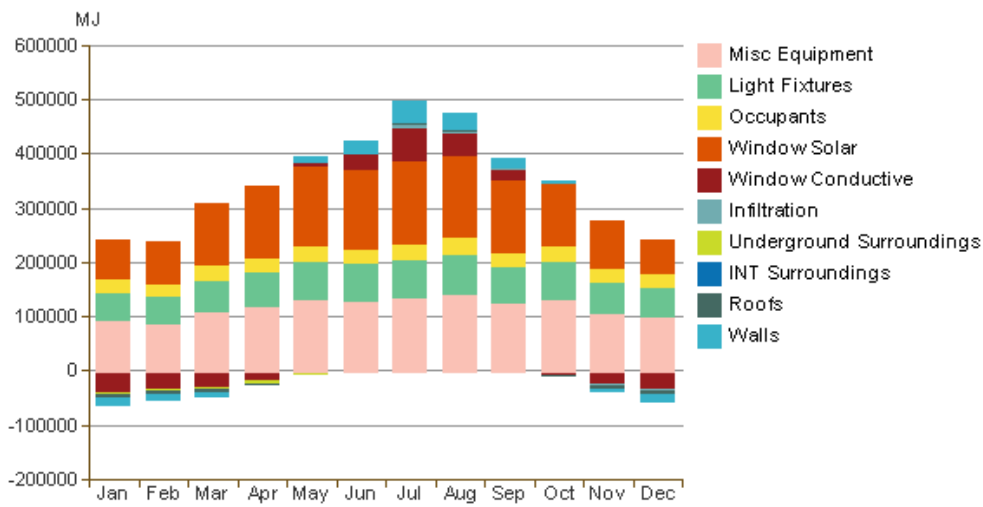
Energy Use: Electricity



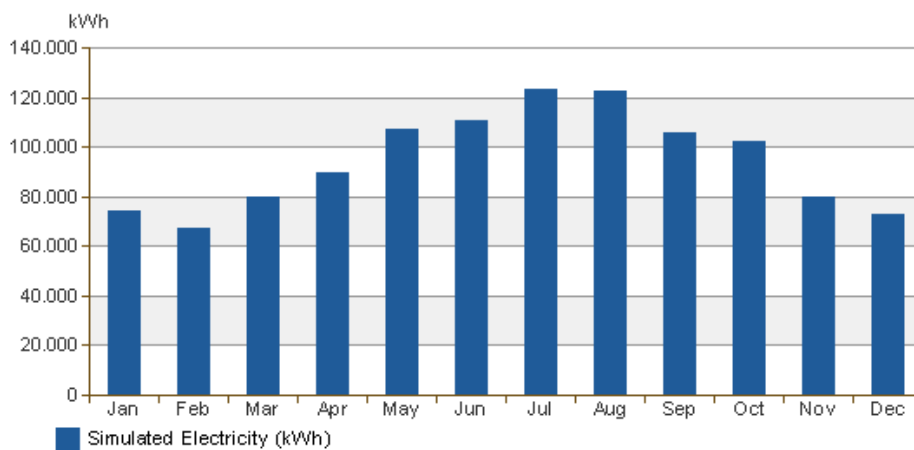
Monthly Heating Load



Monthly Cooling Load



Monthly Electricity Consumption



© Copyright 2011 Autodesk, Inc. All rights reserved. Portions of this software are copyrighted by James J. Hirsch & Associates, the Regents of the University of California, and others.