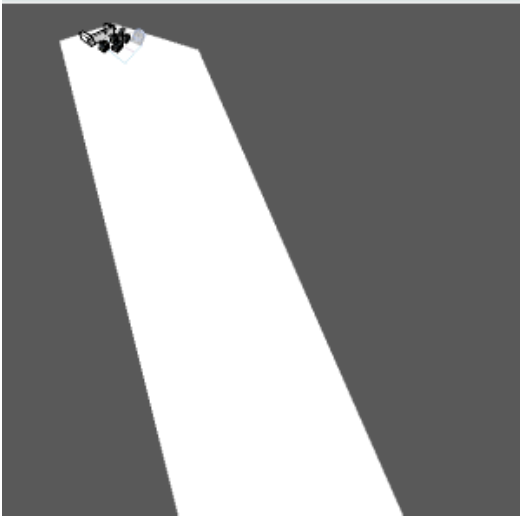


Project 07_06

Project 07_06 Analysis (1)

Analyzed at 6/8/2012 8:35:23 AM

Mass



Building Performance Factors

Location:	41,9644050598145,12,5387477874756
Weather Station:	160240
Outdoor Temperature:	Max: 37°C/Min: -2°C
Floor Area:	8,259 m ²
Exterior Wall Area:	9,082 m ²
Average Lighting Power:	7.53 W / m ²
People:	267 people
Exterior Window Ratio:	0.52
Electrical Cost:	\$0.28 / kWh
Fuel Cost:	\$1.41 / Therm

Energy Use Intensity

Electricity EUI:	231 kWh / sm / yr
Fuel EUI:	939 MJ / sm / yr
Total EUI:	1,769 MJ / sm / yr

Life Cycle Energy Use/Cost

Life Cycle Electricity Use:	57,117,300 kWh
Life Cycle Fuel Use:	232,735,359 MJ
Life Cycle Energy Cost:	\$8,567,036

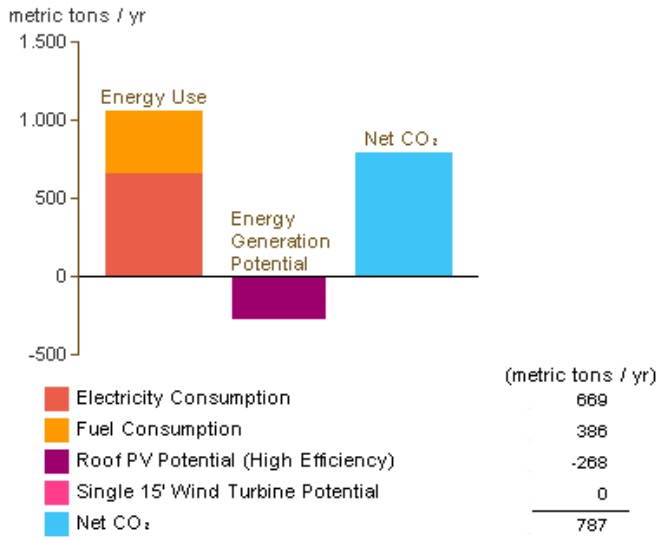
*30-year life and 6.1% discount rate for costs

Renewable Energy Potential

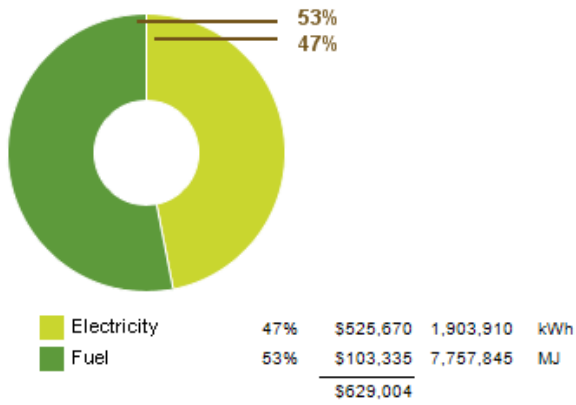
Roof Mounted PV System (Low efficiency):	254,397 kWh / yr
Roof Mounted PV System (Medium efficiency):	508,795 kWh / yr
Roof Mounted PV System (High efficiency):	763,192 kWh / yr
Single 15' Wind Turbine Potential:	837 kWh / yr

*PV efficiencies are assumed to be 5%, 10% and 15% for low, medium and high efficiency systems

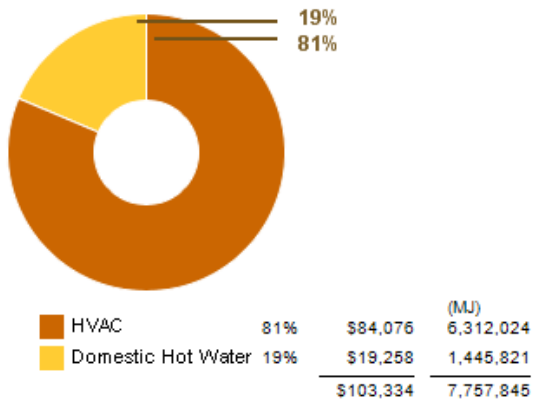
Annual Carbon Emissions



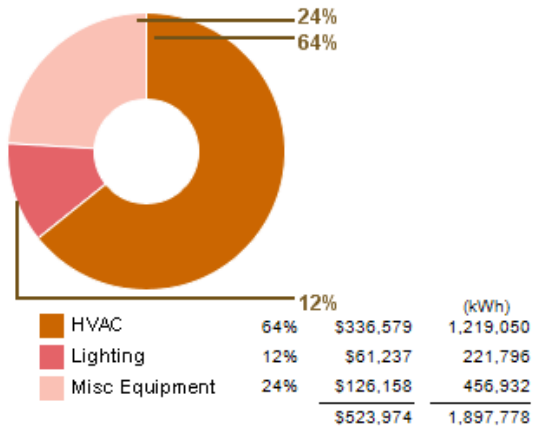
Annual Energy Use/Cost



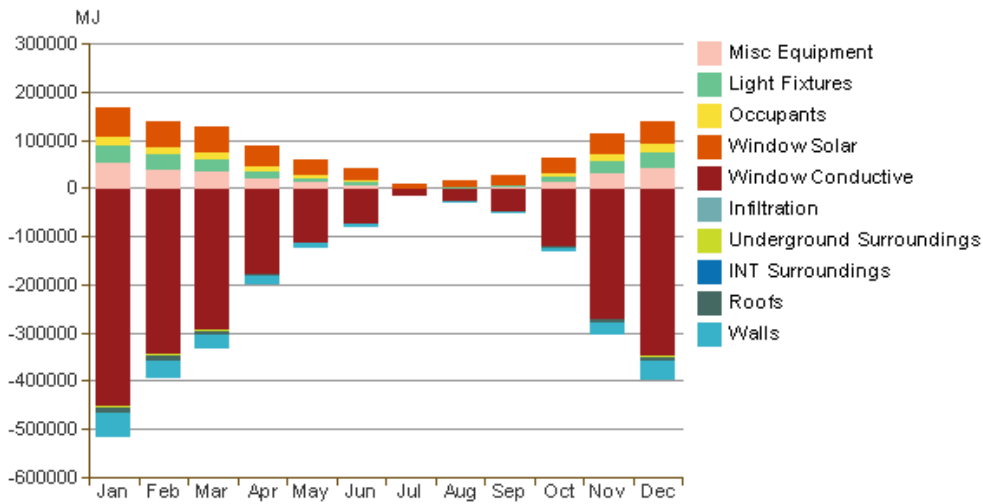
Energy Use: Fuel



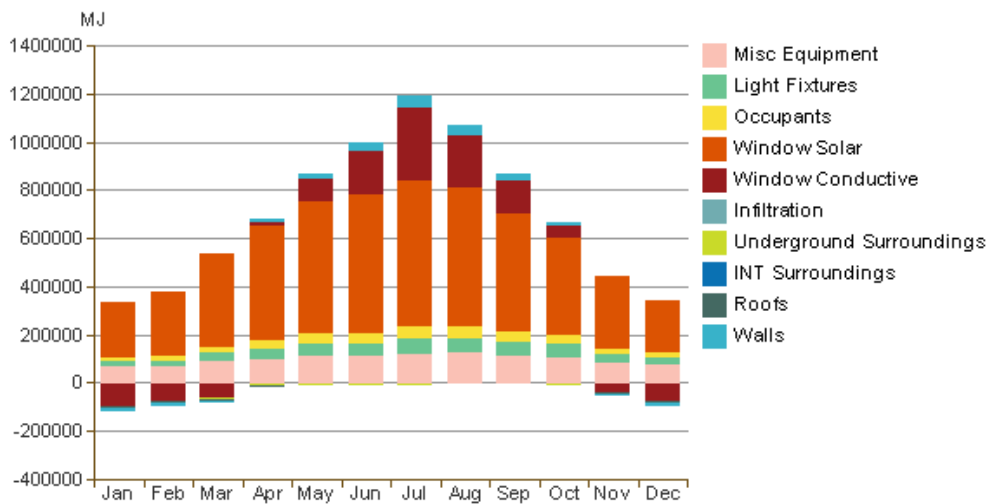
Energy Use: Electricity



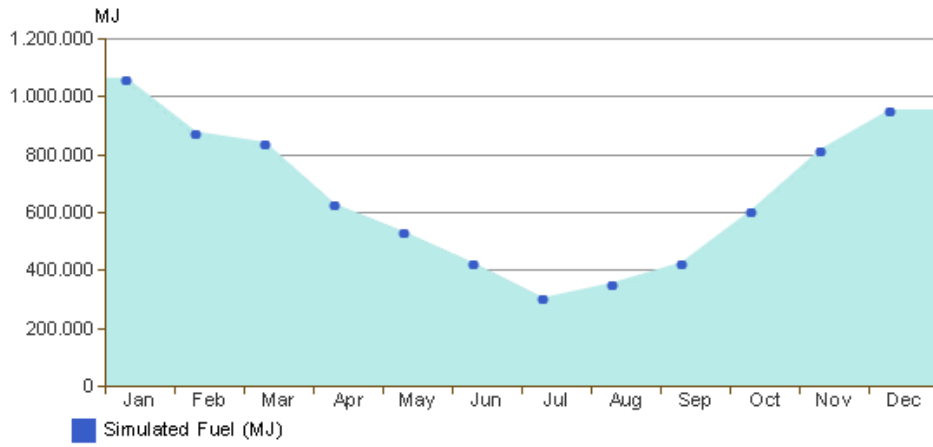
Monthly Heating Load



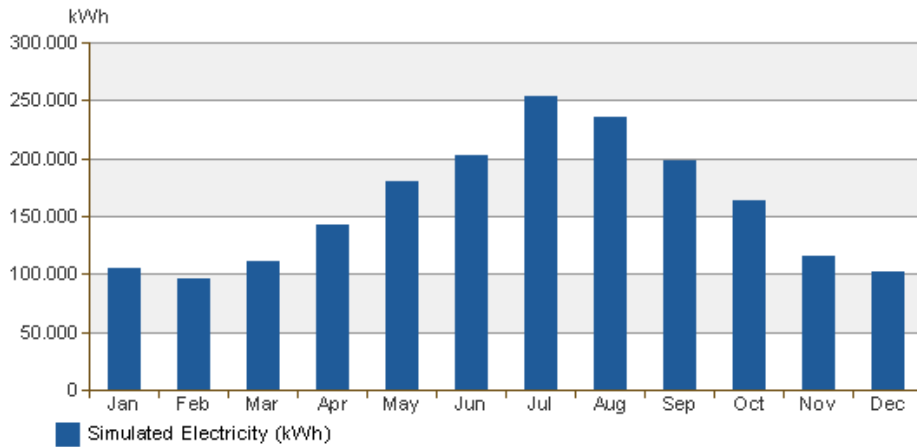
Monthly Cooling Load



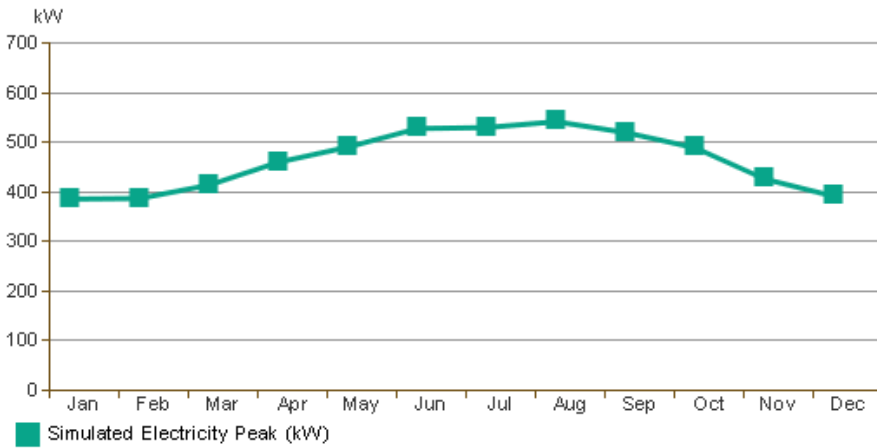
Monthly Fuel Consumption



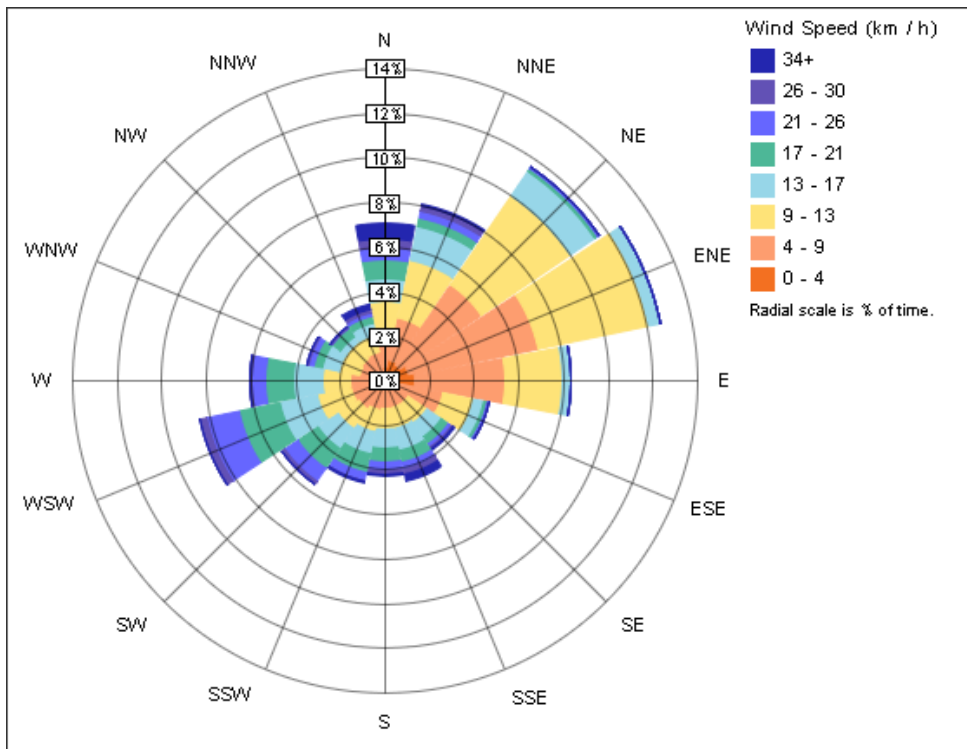
Monthly Electricity Consumption



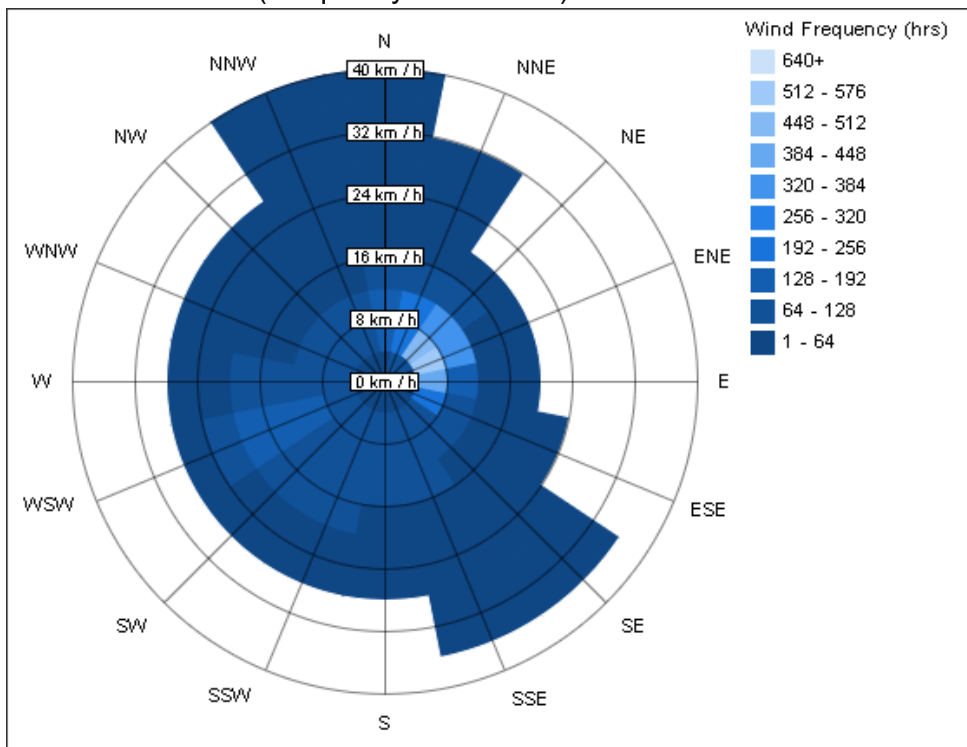
Monthly Peak Demand



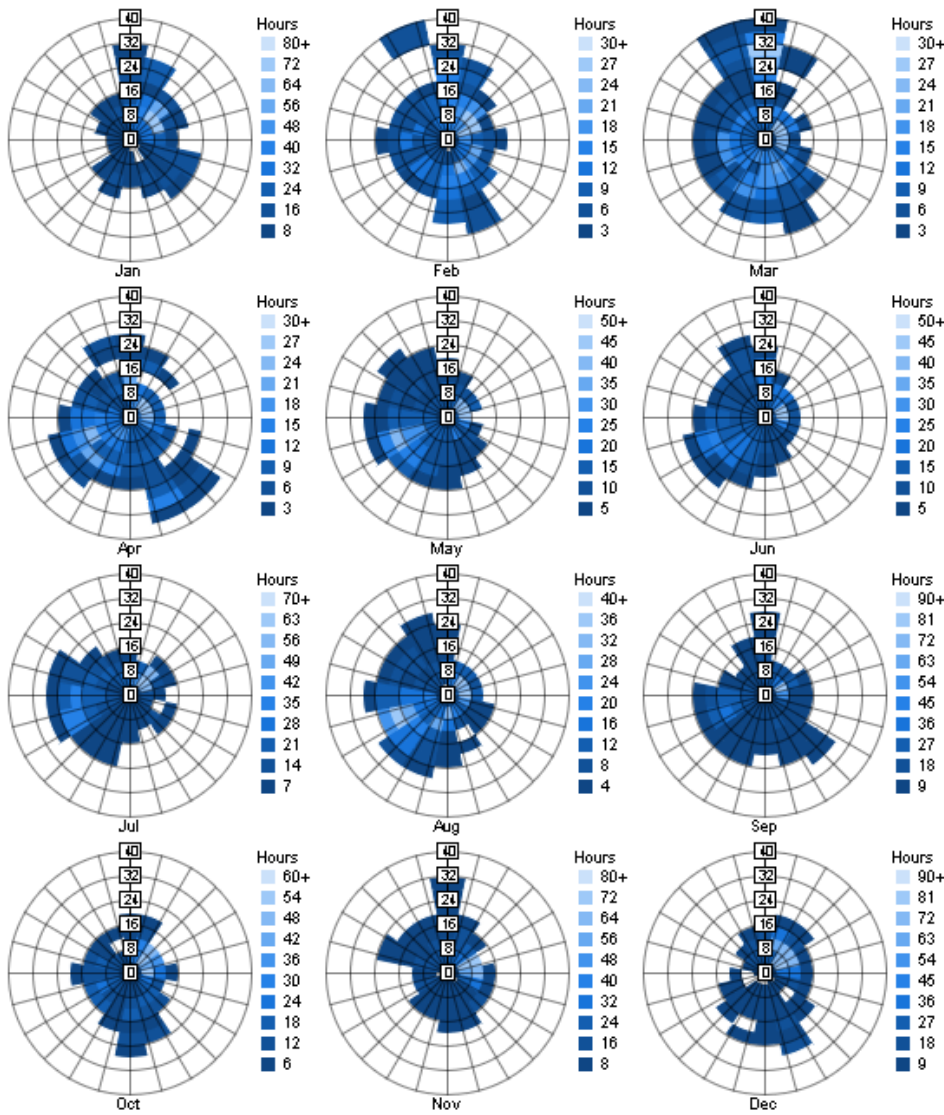
Annual Wind Rose (Speed Distribution)



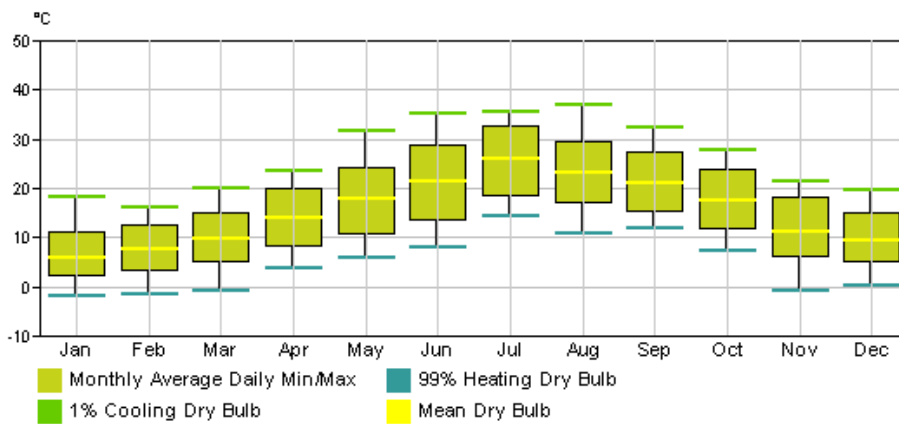
Annual Wind Rose (Frequency Distribution)



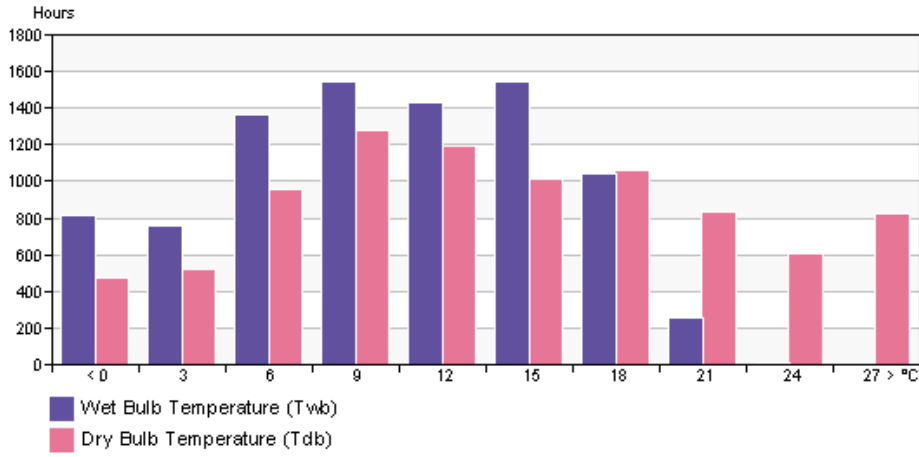
Monthly Wind Roses



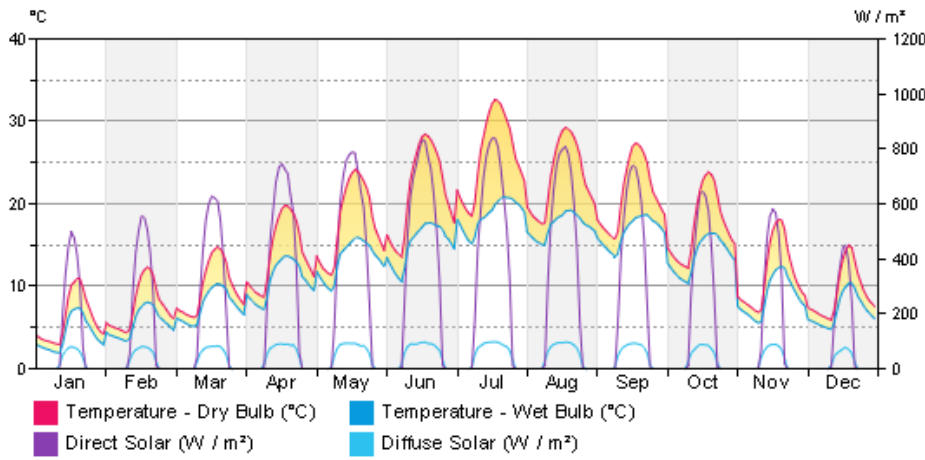
Monthly Design Data



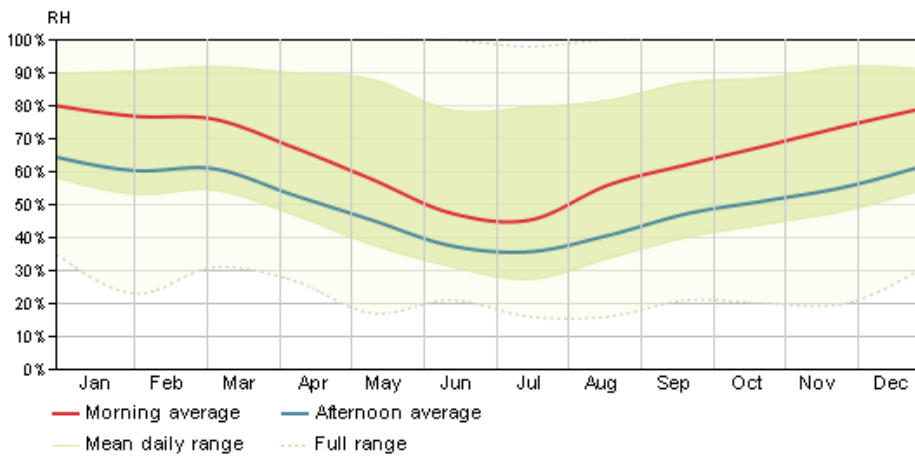
Annual Temperature Bins



Diurnal Weather Averages



Humidity



© Copyright 2011 Autodesk, Inc. All rights reserved. Portions of this software are copyrighted by James J. Hirsch & Associates, the Regents of the University of California, and others.