

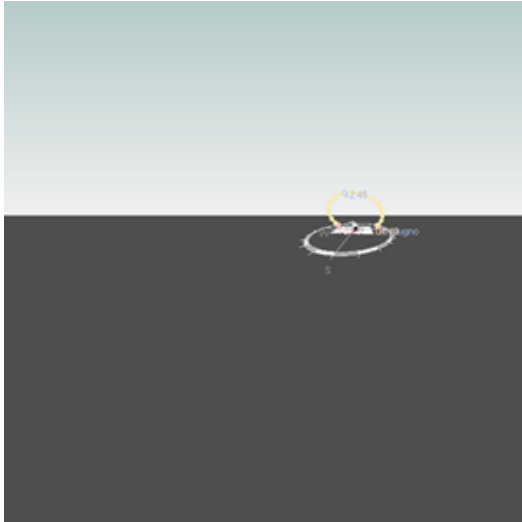
Autodesk®

Project11

Project1 Analysis (1)

Analyzed at 6/7/2012 11:16:08 PM

Mass



Building Performance Factors

| | |
|-------------------------|--|
| Location: | Via Amleto Palermi, 00139 Roma, Italia |
| Weather Station: | 160240 |
| Outdoor Temperature: | Max: 37°C/Min: -2°C |
| Floor Area: | 8,001 m ² |
| Exterior Wall Area: | 6,557 m ² |
| Average Lighting Power: | 10.87 W / m ² |
| People: | 406 people |
| Exterior Window Ratio: | 0.29 |
| Electrical Cost: | \$0.28 / kWh |
| Fuel Cost: | \$1.41 / Therm |

Energy Use Intensity

| | |
|------------------|-------------------|
| Electricity EUI: | 142 kWh / sm / yr |
| Fuel EUI: | 136 MJ / sm / yr |
| Total EUI: | 649 MJ / sm / yr |

Life Cycle Energy Use/Cost

| | |
|-----------------------------|----------------|
| Life Cycle Electricity Use: | 49,548,960 kWh |
| Life Cycle Fuel Use: | 47,335,982 MJ |
| Life Cycle Energy Cost: | \$6,497,187 |

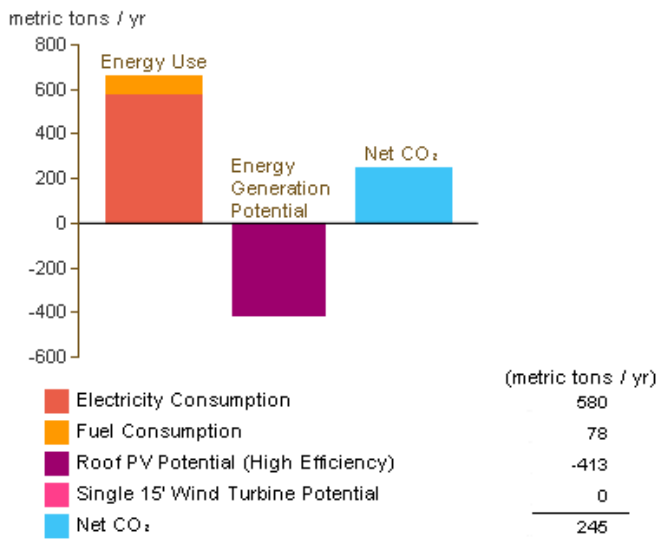
*30-year life and 6.1% discount rate for costs

Renewable Energy Potential

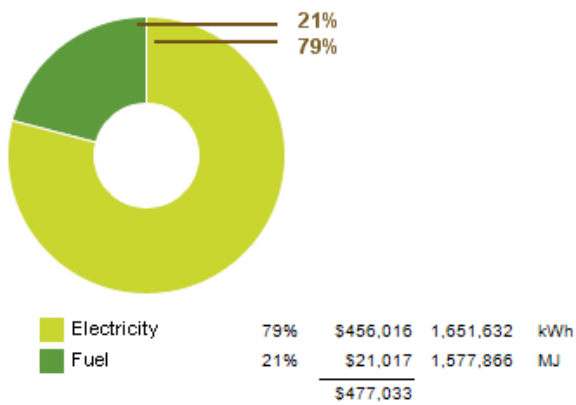
| | |
|---|--------------------|
| Roof Mounted PV System (Low efficiency): | 391,867 kWh / yr |
| Roof Mounted PV System (Medium efficiency): | 783,734 kWh / yr |
| Roof Mounted PV System (High efficiency): | 1,175,601 kWh / yr |
| Single 15' Wind Turbine Potential: | 837 kWh / yr |

*PV efficiencies are assumed to be 5%, 10% and 15% for low, medium and high efficiency systems

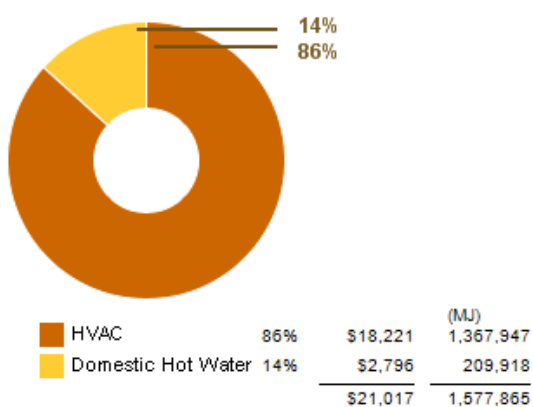
Annual Carbon Emissions



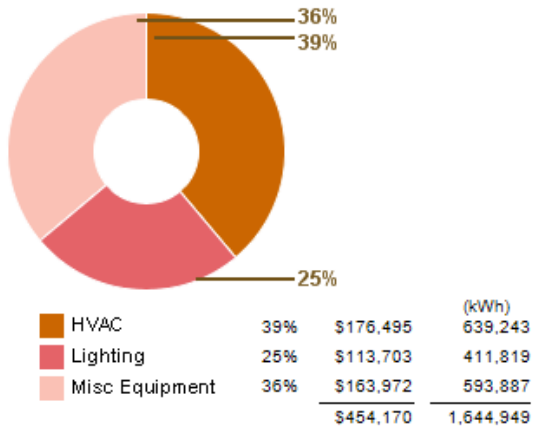
Annual Energy Use/Cost



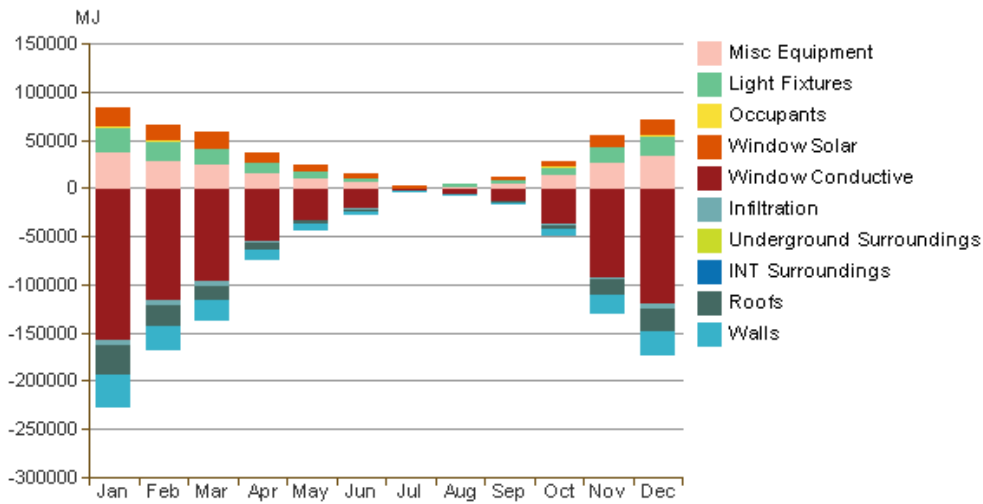
Energy Use: Fuel



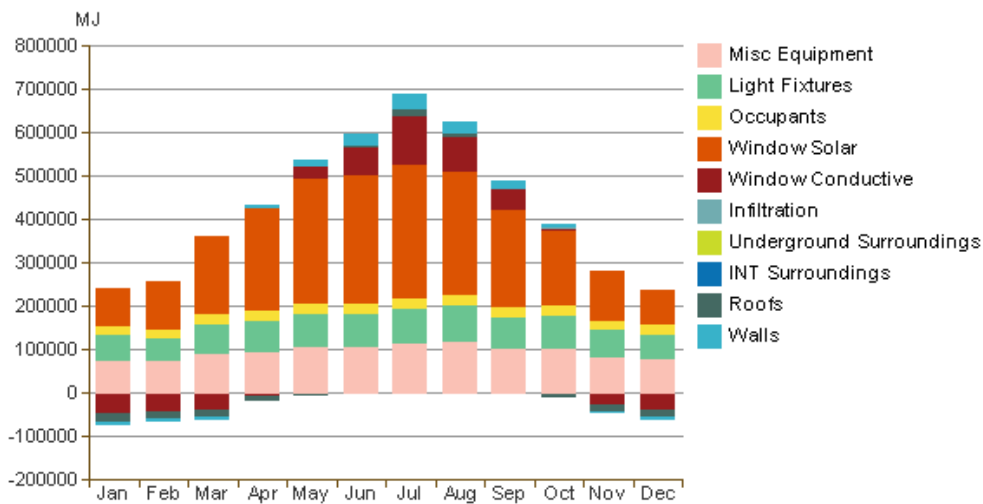
Energy Use: Electricity



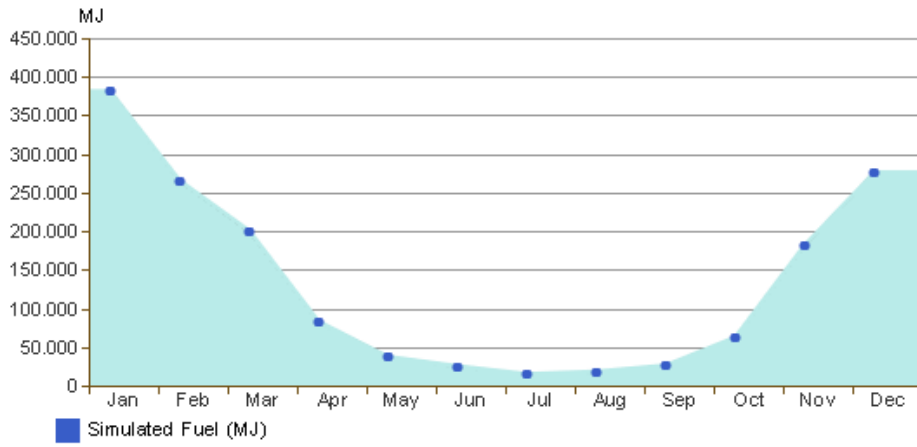
Monthly Heating Load



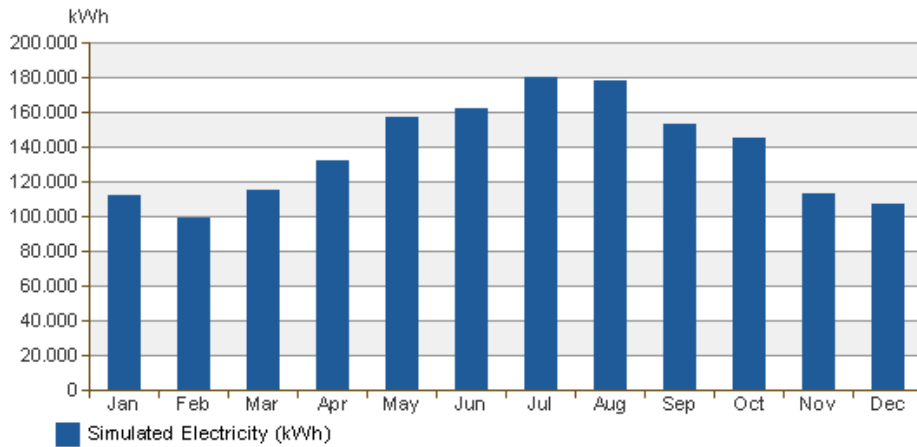
Monthly Cooling Load



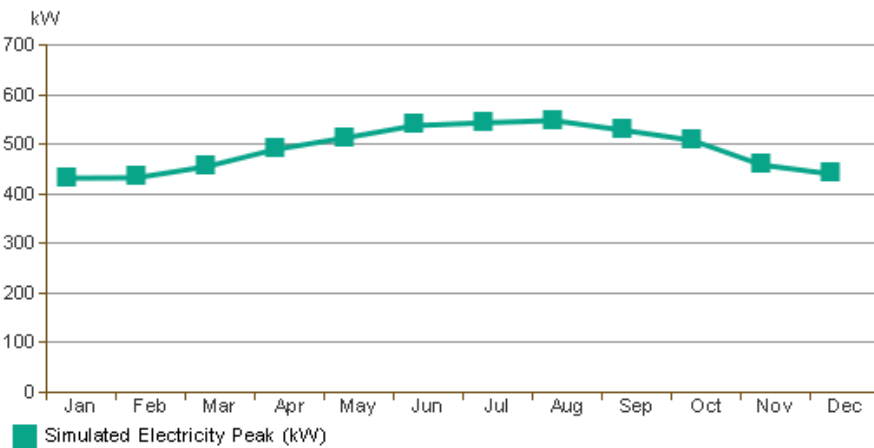
Monthly Fuel Consumption



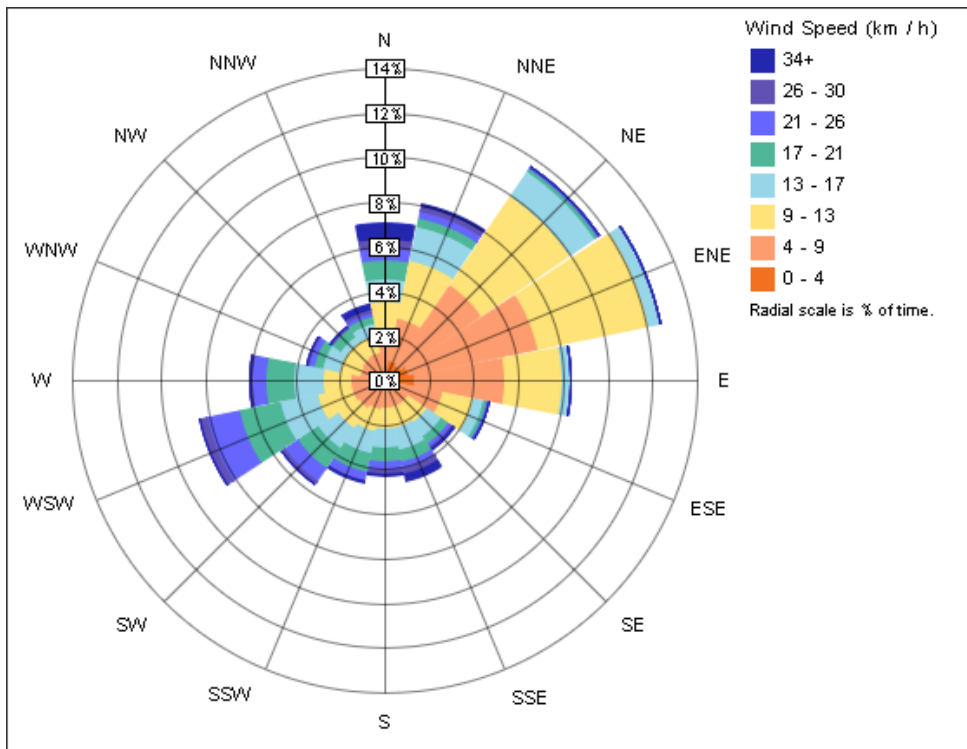
Monthly Electricity Consumption



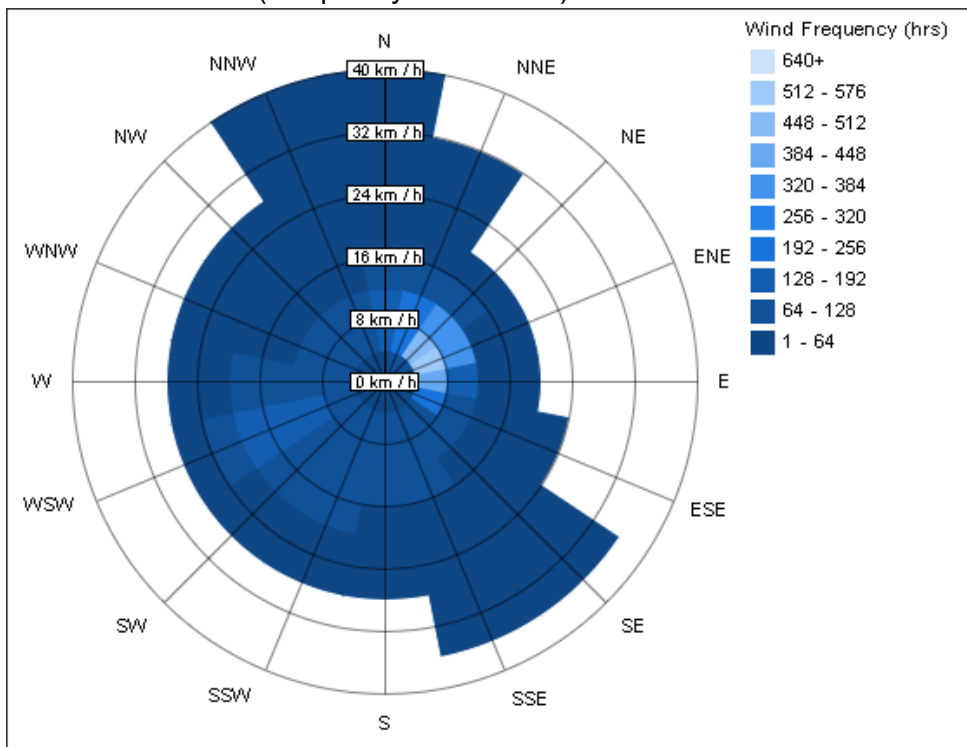
Monthly Peak Demand



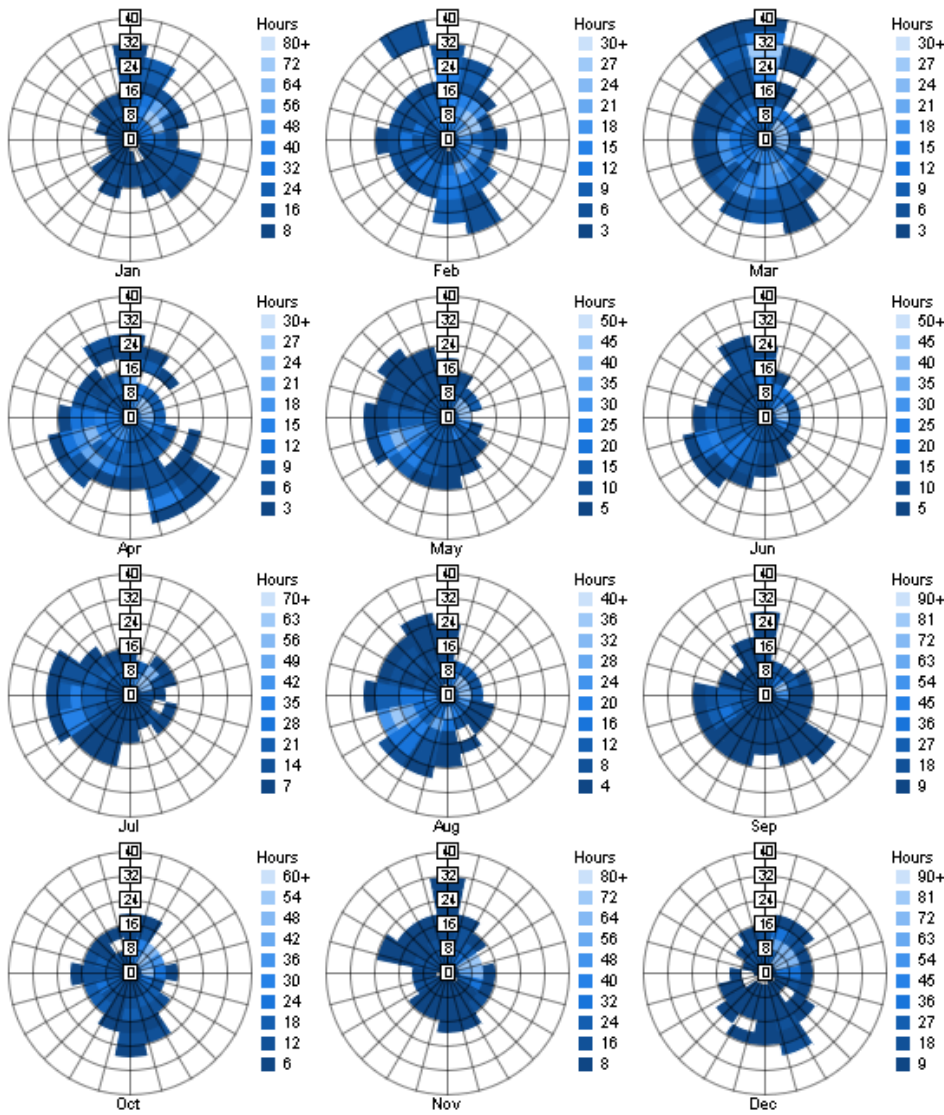
Annual Wind Rose (Speed Distribution)



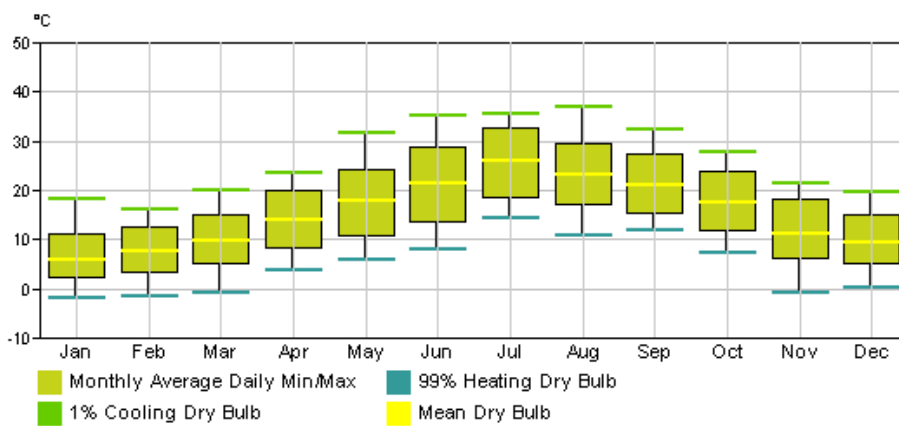
Annual Wind Rose (Frequency Distribution)



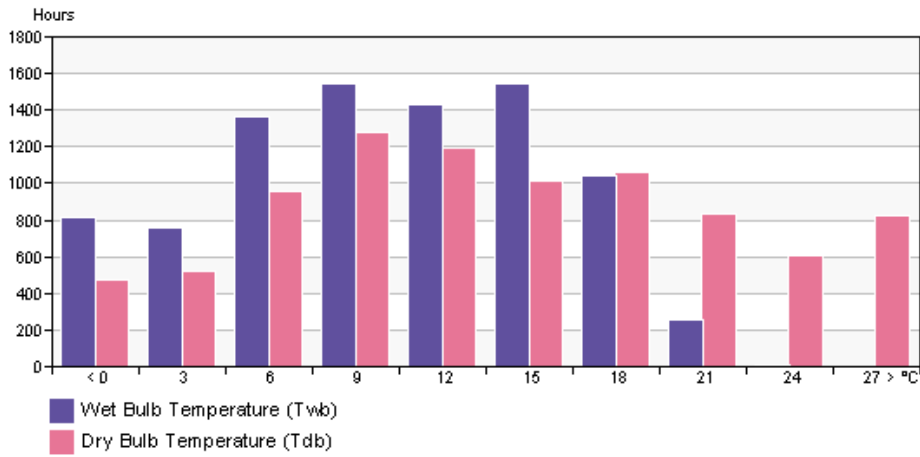
Monthly Wind Roses



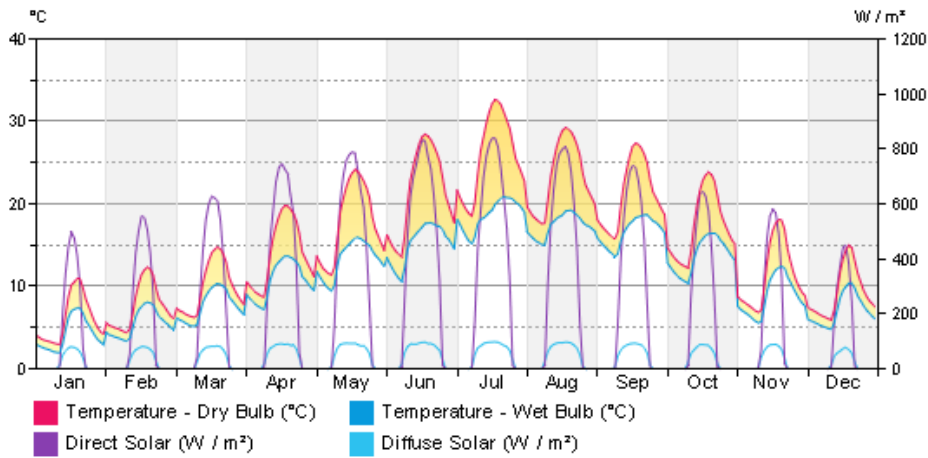
Monthly Design Data



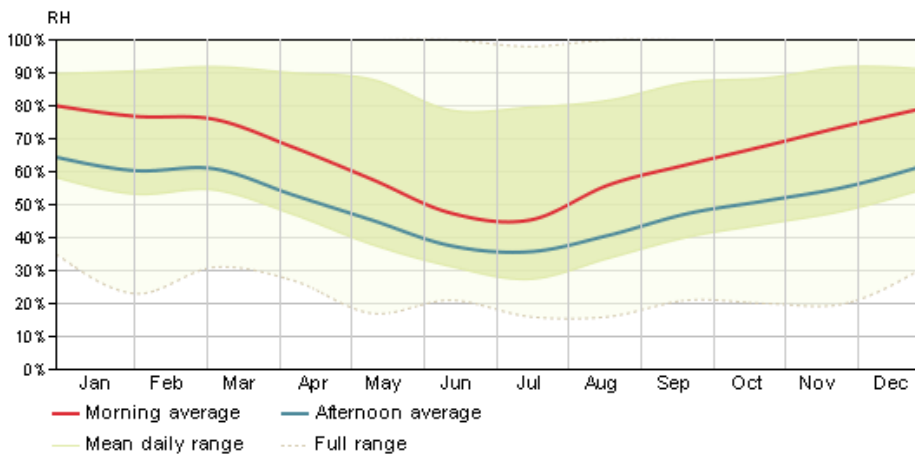
Annual Temperature Bins



Diurnal Weather Averages



Humidity



© Copyright 2011 Autodesk, Inc. All rights reserved. Portions of this software are copyrighted by James J. Hirsch & Associates, the Regents of the University of California, and others.

Revit Conceptual Energy Analysis Data