

Autodesk®

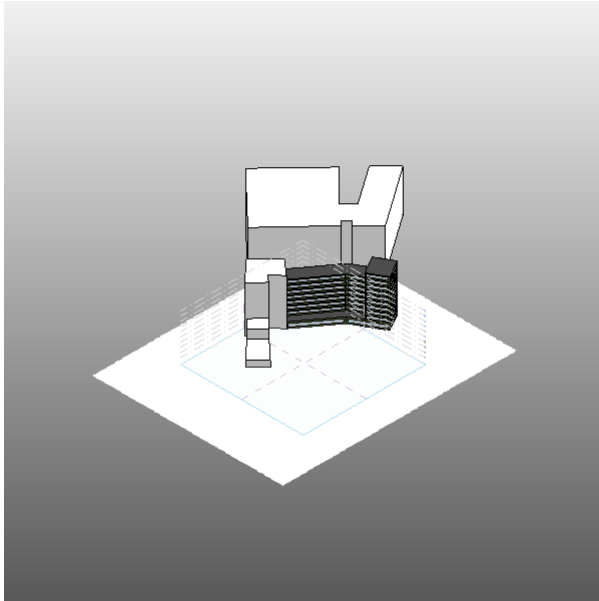
Consegna Vasari 01.06.0001

Rendimento energetico

Analyzed at 6/5/2012 9:22:33 AM

Version 2013.0.25.942(DOE-2.2-44e4)

Mass



Building Performance Factors

Location:	Via Assisi, 00181 Roma, Italia
Weather Station:	160240
Outdoor Temperature:	Max: 37°C/Min: -2°C
Floor Area:	4,616 m ²
Exterior Wall Area:	3,631 m ²
Average Lighting Power:	10.87 W / m ²
People:	219 people
Exterior Window Ratio:	0.50
Electrical Cost:	\$0.28 / kWh
Fuel Cost:	\$1.41 / Therm

Energy Use Intensity

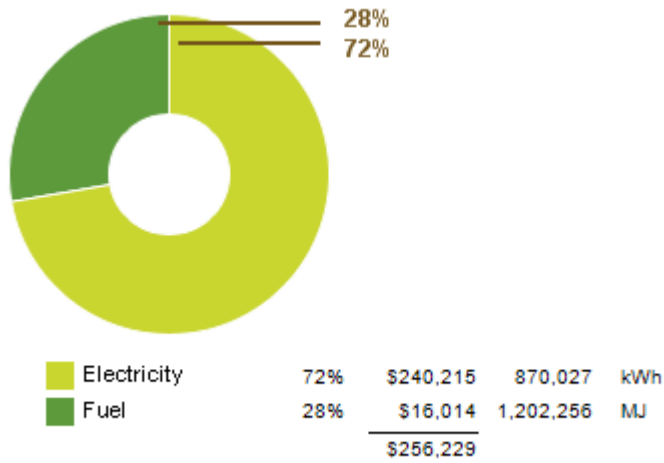
Electricity EUI:	189 kWh / sm / yr
Fuel EUI:	260 MJ / sm / yr
Total EUI:	939 MJ / sm / yr

Life Cycle Energy Use/Cost

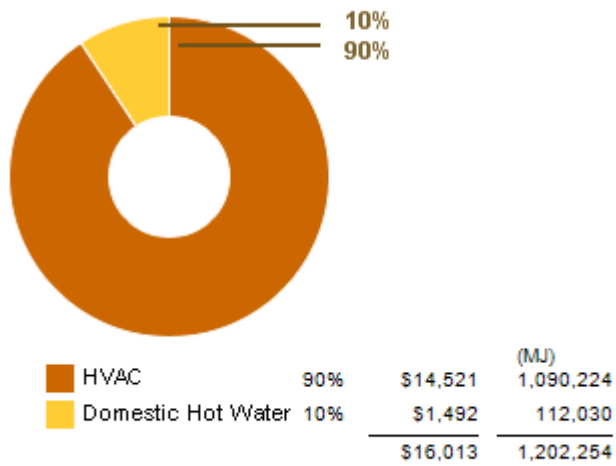
Life Cycle Electricity Use:	26,100,819 kWh
Life Cycle Fuel Use:	36,067,681 MJ
Life Cycle Energy Cost:	\$3,489,834

*30-year life and 6.1% discount rate for costs

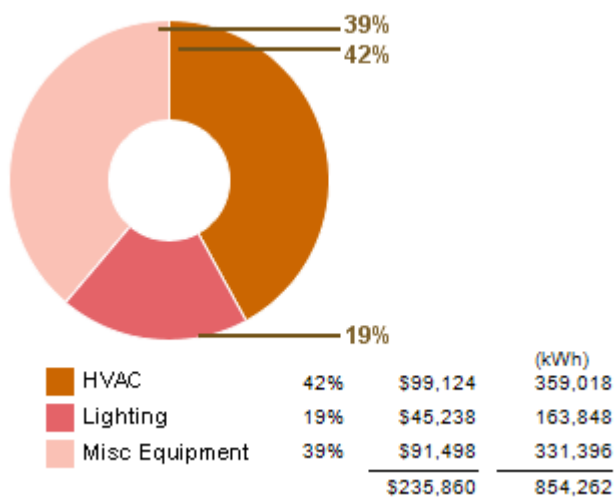
Annual Energy Use/Cost



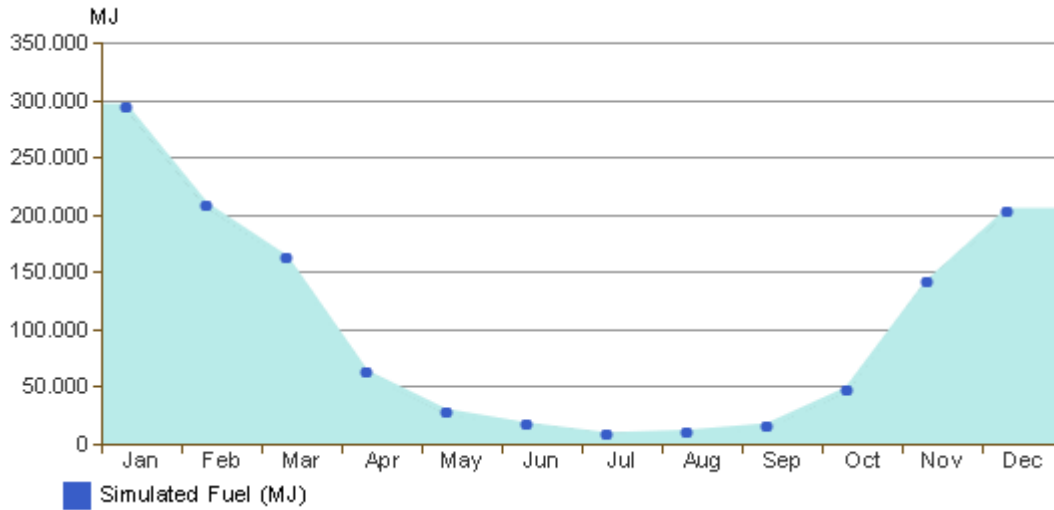
Energy Use: Fuel



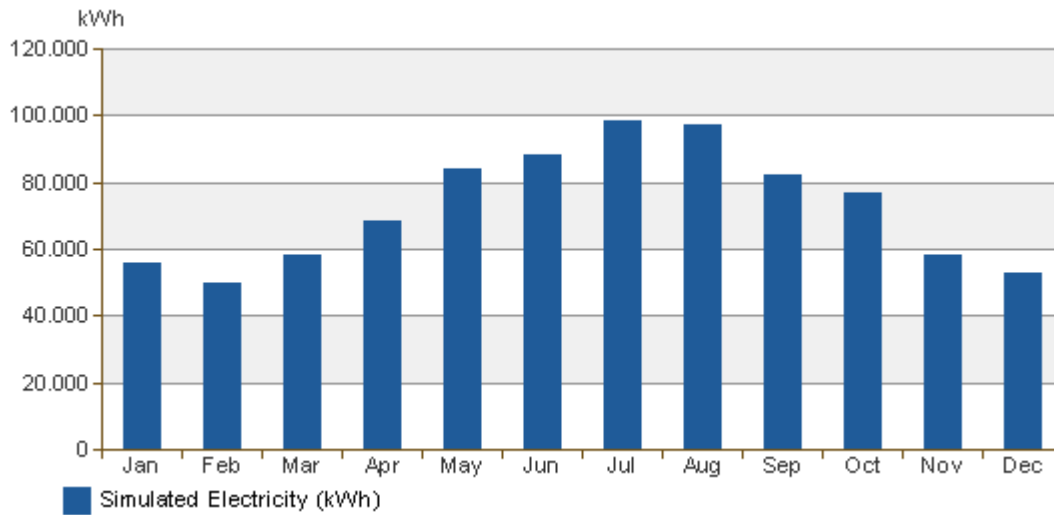
Energy Use: Electricity



Monthly Fuel Consumption



Monthly Electricity Consumption



© Copyright 2011 Autodesk, Inc. All rights reserved. Portions of this software are copyrighted by James J. Hirsch & Associates, the Regents of the University of California, and others.

Revit Conceptual Energy Analysis Data