

Autodesk®

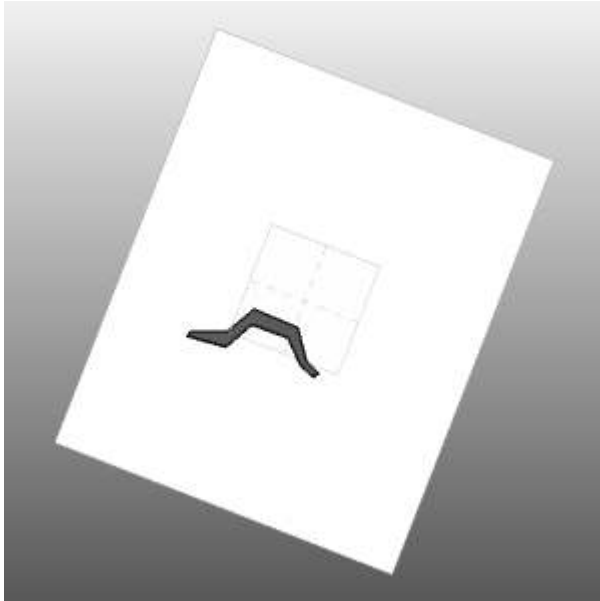
viaBelluzzo_Vasari.00081

viaBelluzzo_Vasari.0008 Analysis (5)

Analyzed at 6/8/2012 10:37:08 PM

Version 2013.0.25.942(DOE-2.2-44e4)

Mass



Building Performance Factors

Location:	Via Giuseppe Belluzzo, 00149 Roma, Italia
Weather Station:	160000
Outdoor Temperature:	Max: 35°C/Min: -2°C
Floor Area:	3,899 m ²
Exterior Wall Area:	2,975 m ²
Average Lighting Power:	7.53 W / m ²
People:	127 people
Exterior Window Ratio:	0.40
Electrical Cost:	\$0.28 / kWh
Fuel Cost:	\$1.41 / Therm

Energy Use Intensity

Electricity EUI:	214 kWh / sm / yr
Fuel EUI:	792 MJ / sm / yr
Total EUI:	1,562 MJ / sm / yr

Life Cycle Energy Use/Cost

Life Cycle Electricity Use:	25,017,225 kWh
Life Cycle Fuel Use:	92,657,464 MJ
Life Cycle Energy Cost:	\$3,696,220

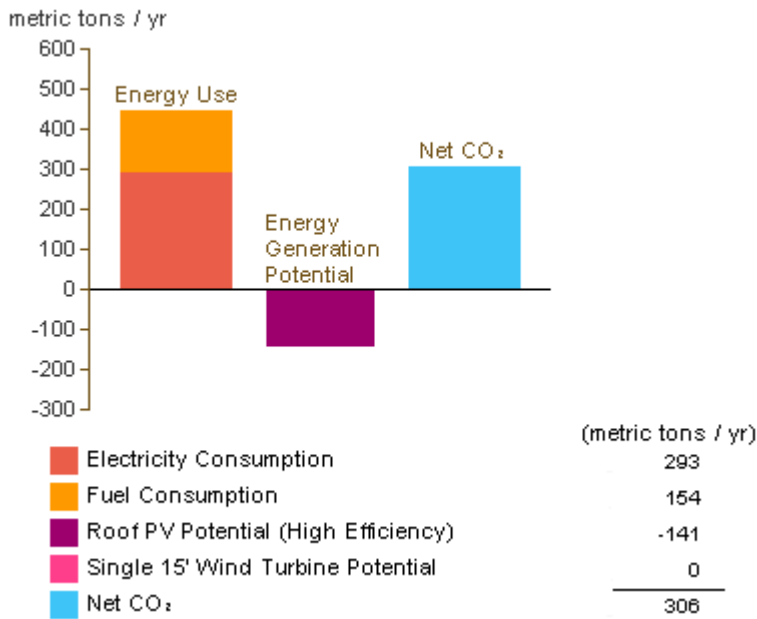
[*30-year life and 6.1% discount rate for costs](#)

Renewable Energy Potential

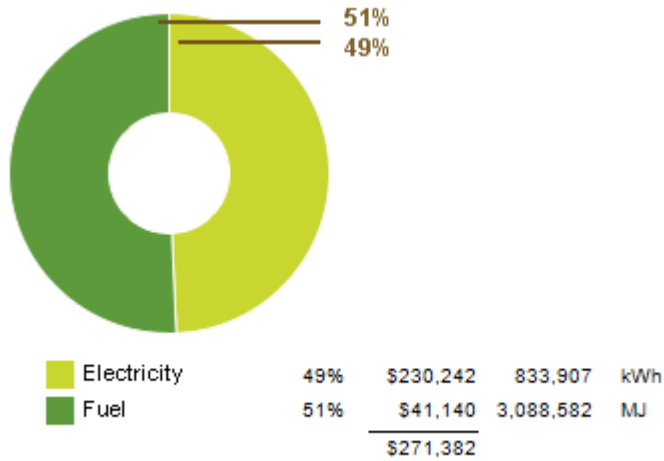
Roof Mounted PV System (Low efficiency):	134,373 kWh / yr
Roof Mounted PV System (Medium efficiency):	268,747 kWh / yr
Roof Mounted PV System (High efficiency):	403,120 kWh / yr
Single 15' Wind Turbine Potential:	1,054 kWh / yr

*PV efficiencies are assumed to be 5%, 10% and 15% for low, medium and high efficiency systems

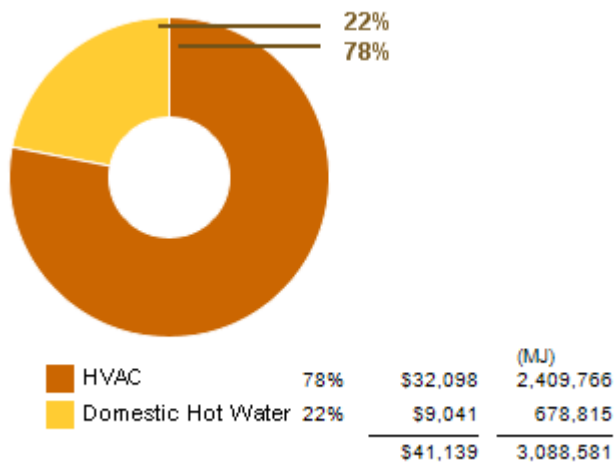
Annual Carbon Emissions



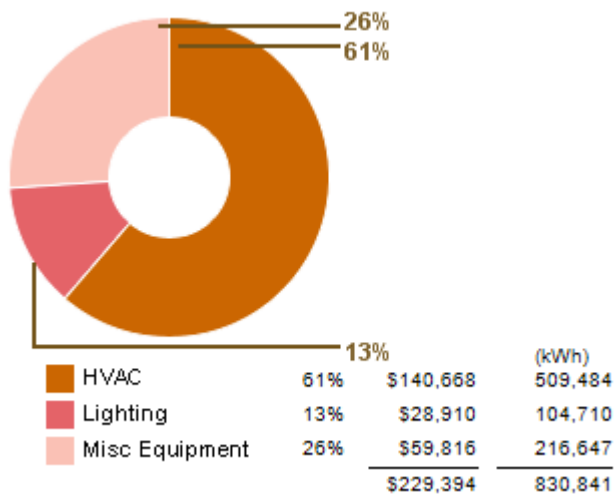
Annual Energy Use/Cost



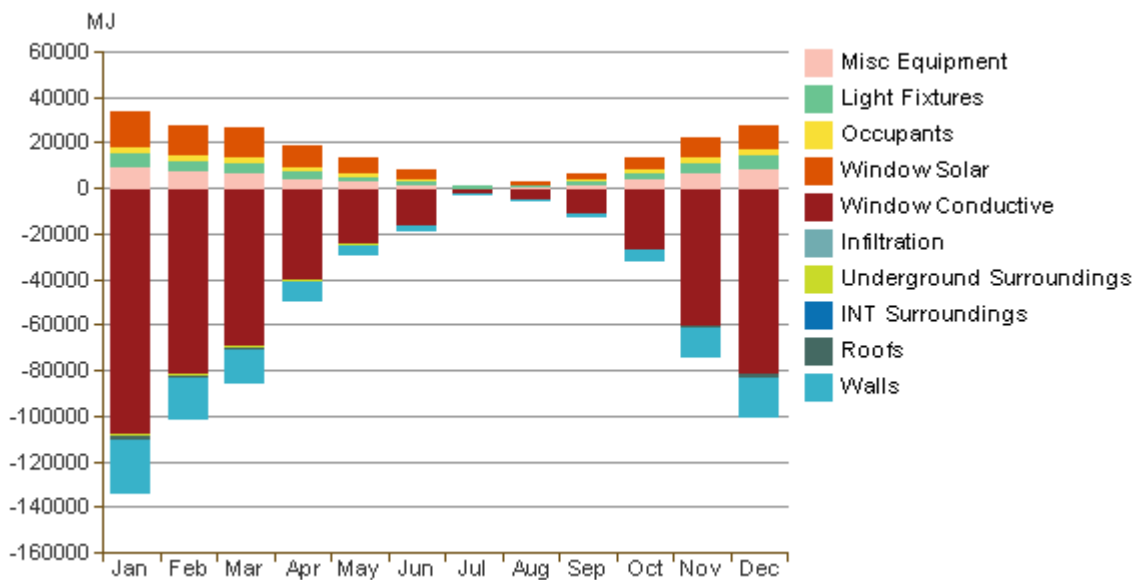
Energy Use: Fuel



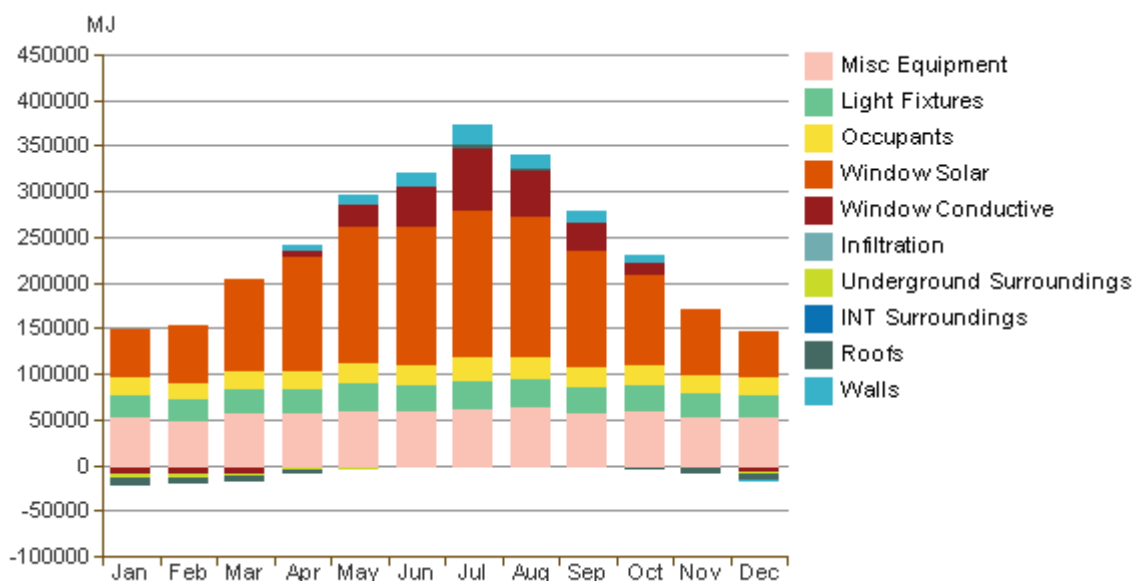
Energy Use: Electricity



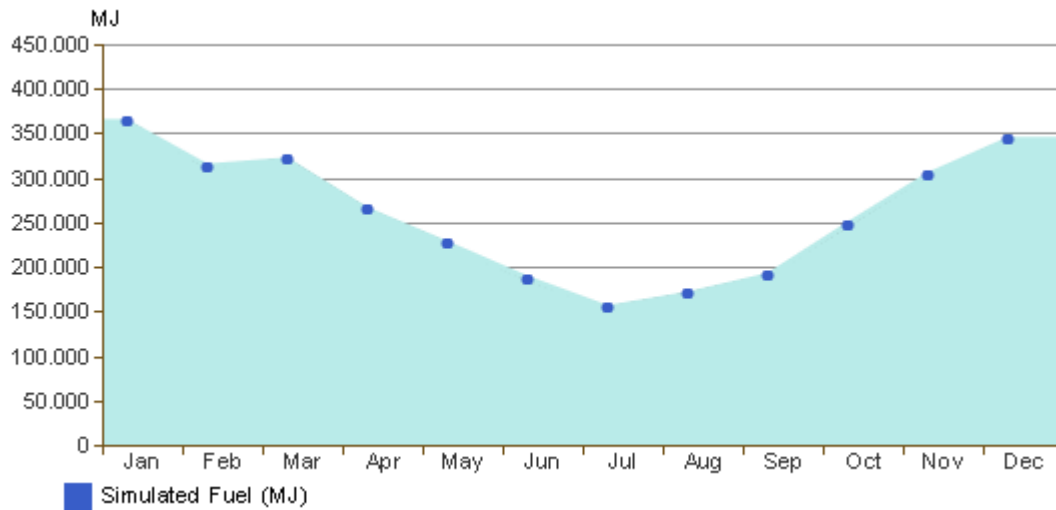
Monthly Heating Load



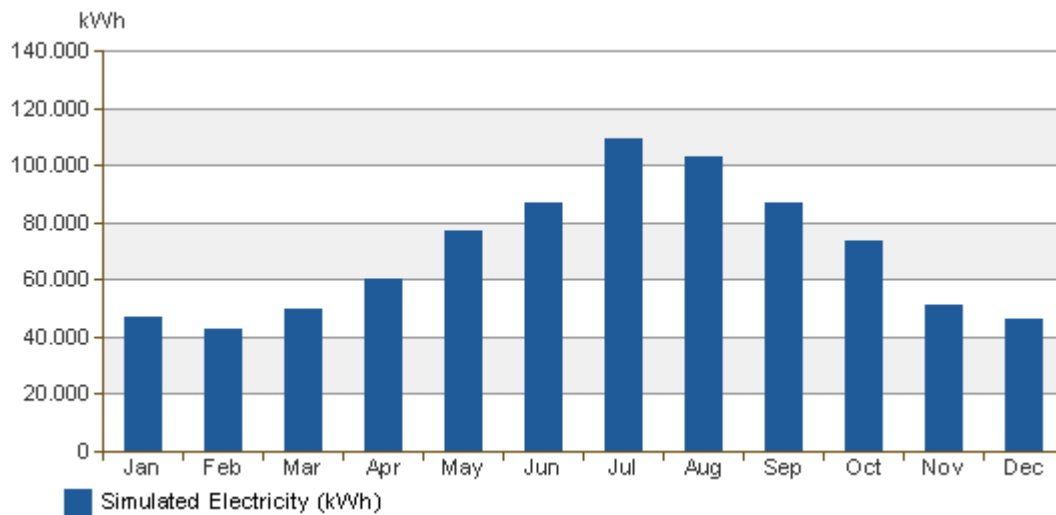
Monthly Cooling Load



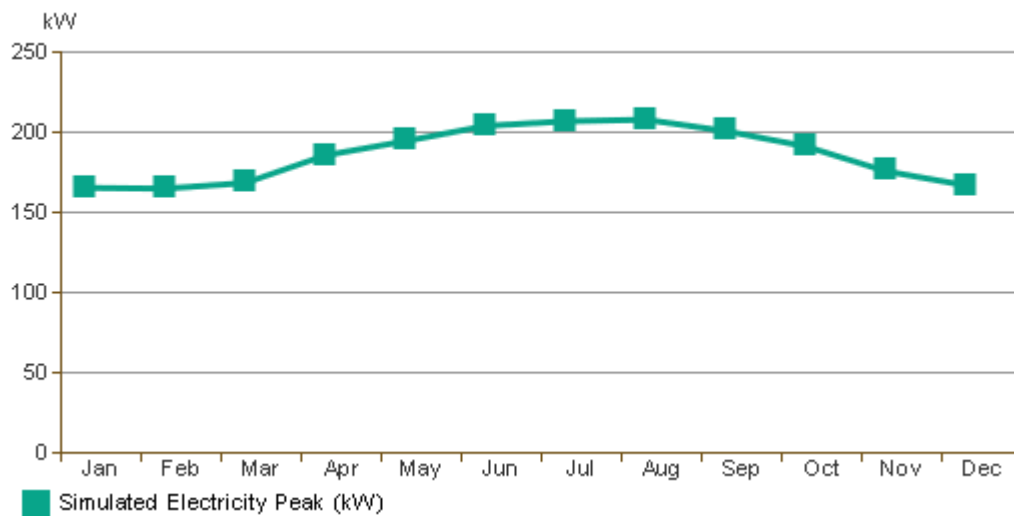
Monthly Fuel Consumption



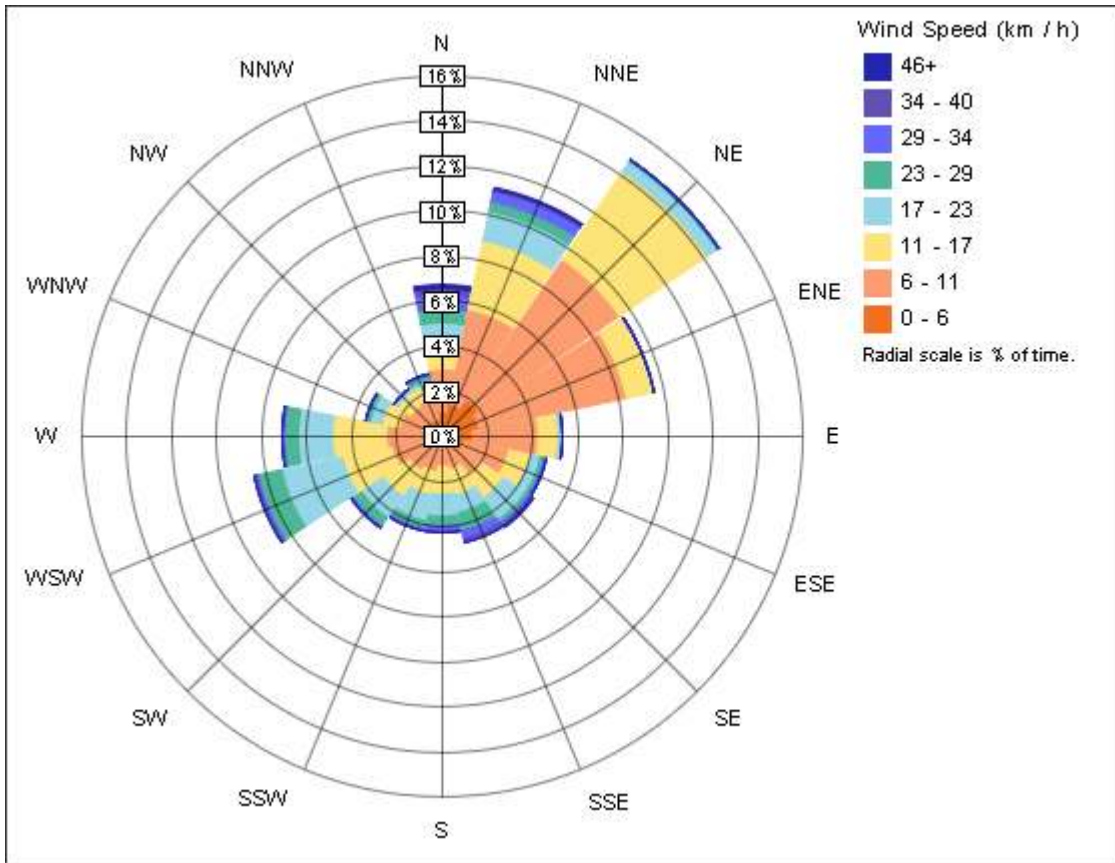
Monthly Electricity Consumption



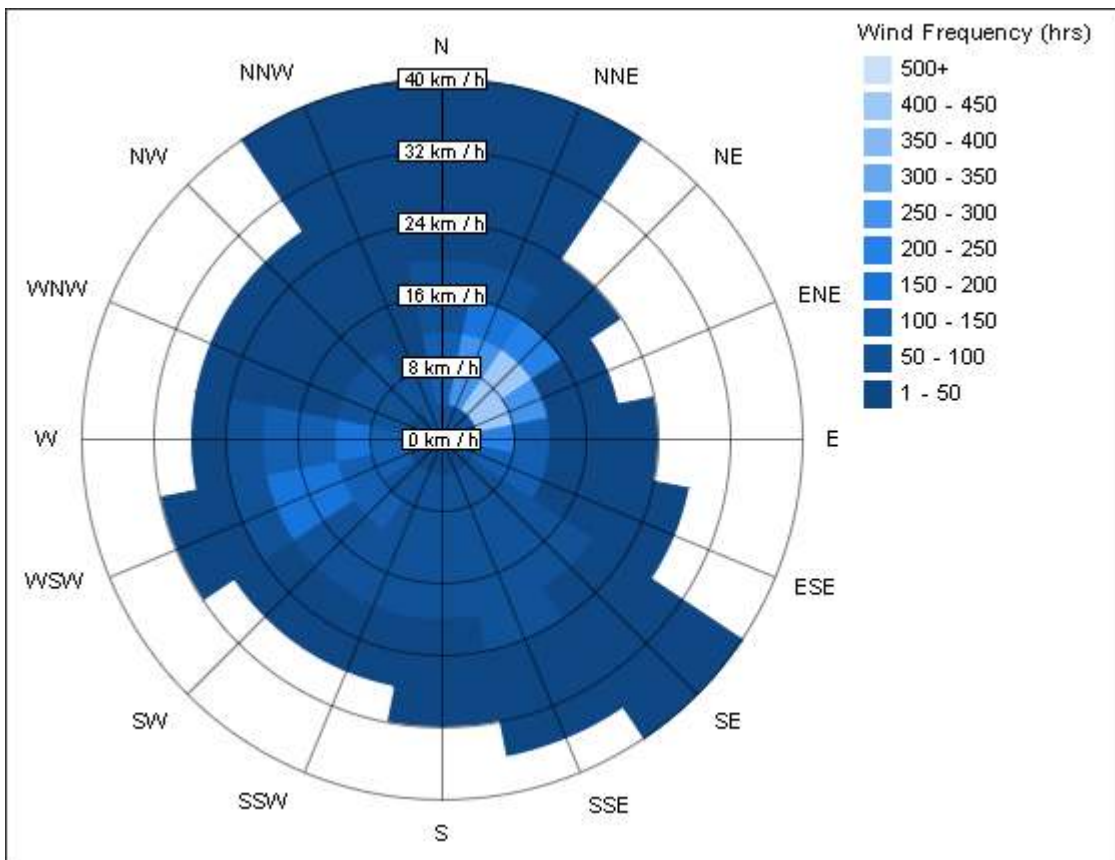
Monthly Peak Demand



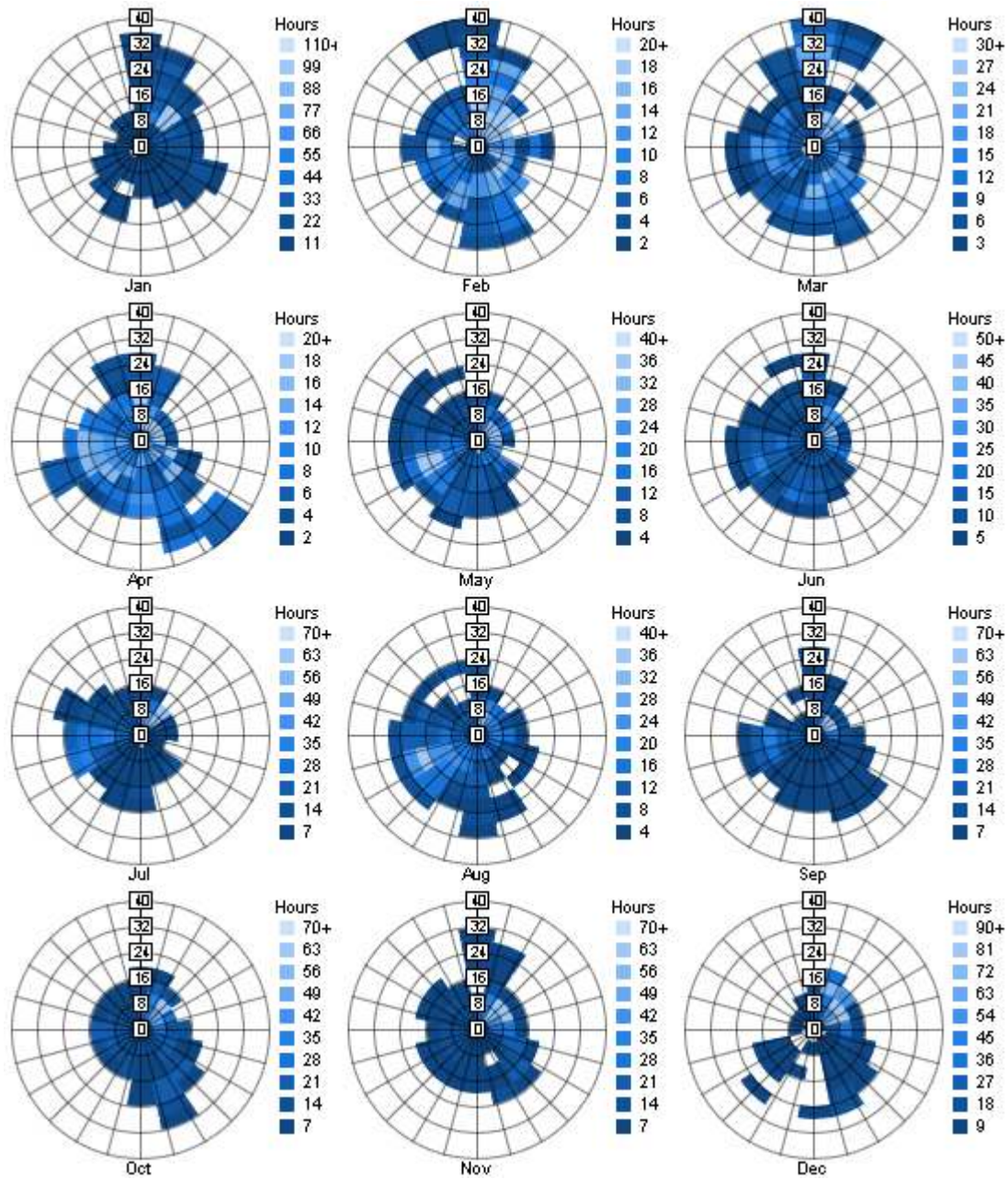
Annual Wind Rose (Speed Distribution)



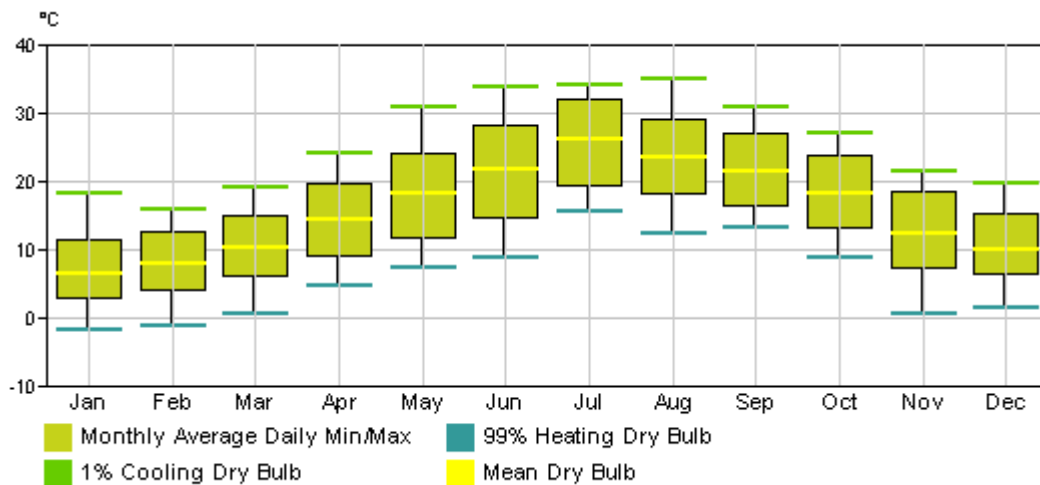
Annual Wind Rose (Frequency Distribution)



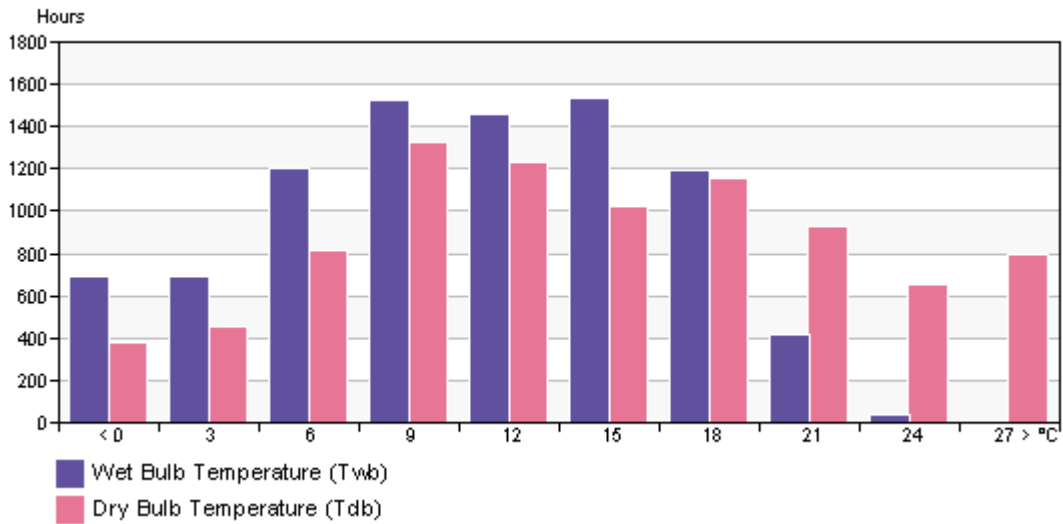
Monthly Wind Roses



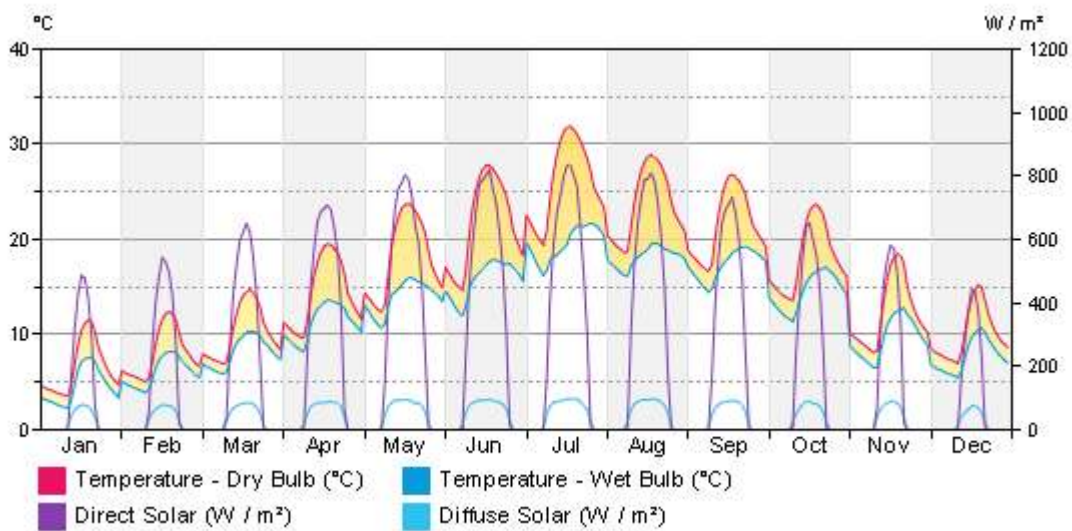
Monthly Design Data



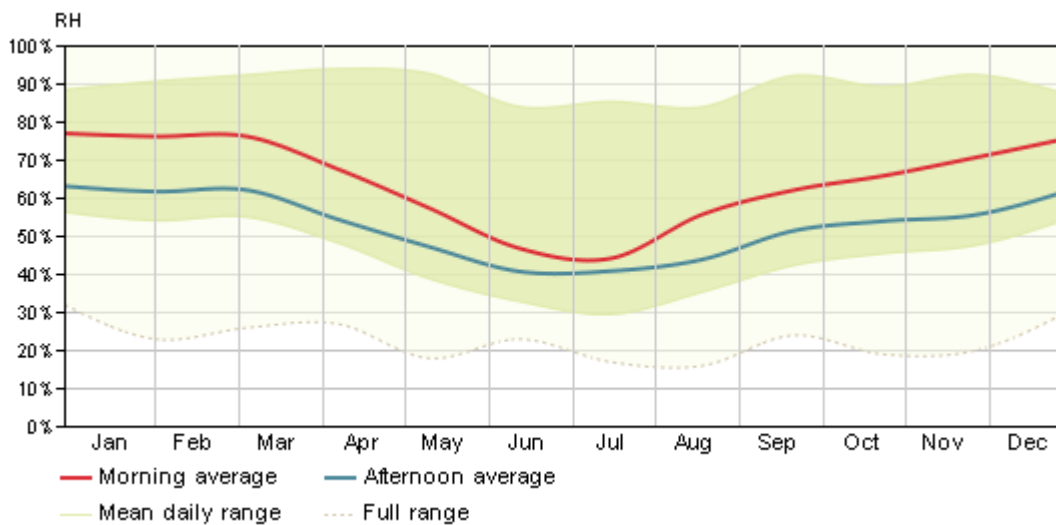
Annual Temperature Bins



Diurnal Weather Averages



Humidity



James J. Hirsch & Associates, the Regents of the University of California, and others.

Revit Conceptual Energy Analysis Data