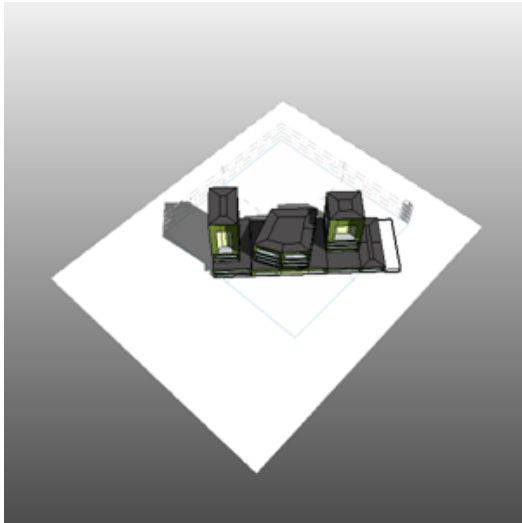


emiliano

emiliano Analysis (1)

Analyzed at 7/2/2012 9:44:44 PM

Mass



Building Performance Factors

Location:	Via Giuseppe Belluzzo, 00149 Roma, Italia
Weather Station:	160000
Outdoor Temperature:	Max: 35°C/Min: -2°C
Floor Area:	6,344 m ²
Exterior Wall Area:	5,802 m ²
Average Lighting Power:	10.44 W / m ²
People:	279 people
Exterior Window Ratio:	0.40
Electrical Cost:	\$0.28 / kWh
Fuel Cost:	\$1.41 / Therm

Energy Use Intensity

Electricity EUI:	210 kWh / sm / yr
Fuel EUI:	401 MJ / sm / yr
Total EUI:	1,157 MJ / sm / yr

Life Cycle Energy Use/Cost

Life Cycle Electricity Use:	39,983,640 kWh
Life Cycle Fuel Use:	76,327,593 MJ
Life Cycle Energy Cost:	\$5,473,500

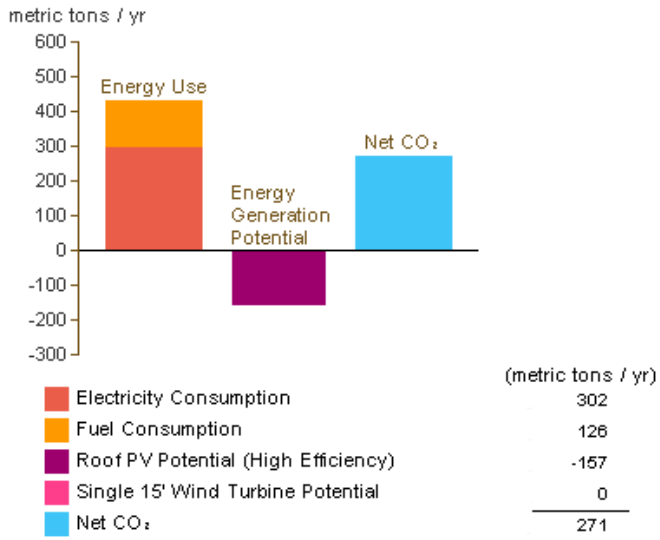
*30-year life and 6.1% discount rate for costs

Renewable Energy Potential

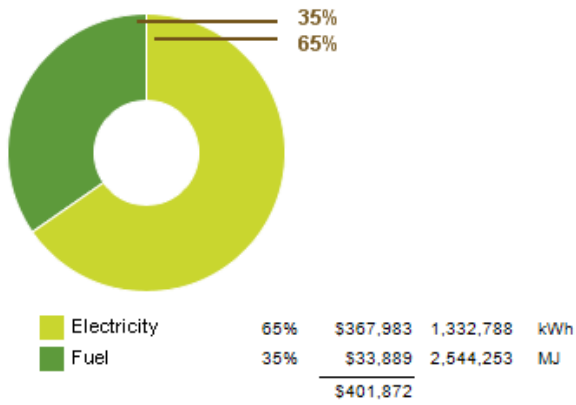
Roof Mounted PV System (Low efficiency):	230,833 kWh / yr
Roof Mounted PV System (Medium efficiency):	461,667 kWh / yr
Roof Mounted PV System (High efficiency):	692,500 kWh / yr
Single 15' Wind Turbine Potential:	1,054 kWh / yr

*PV efficiencies are assumed to be 5%, 10% and 15% for low, medium and high efficiency systems

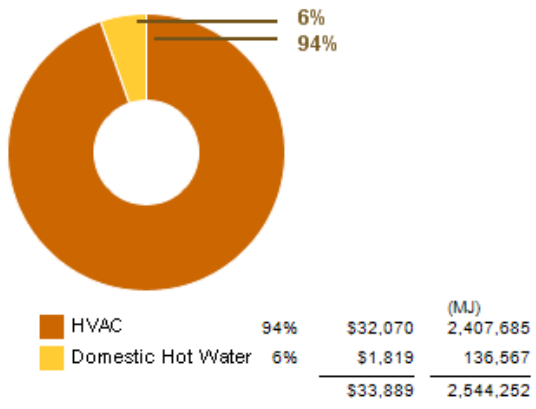
Annual Carbon Emissions



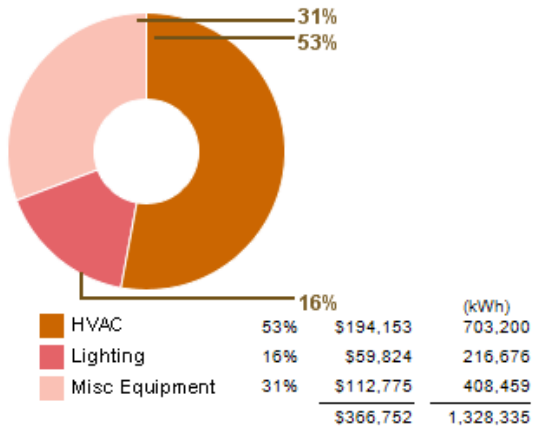
Annual Energy Use/Cost



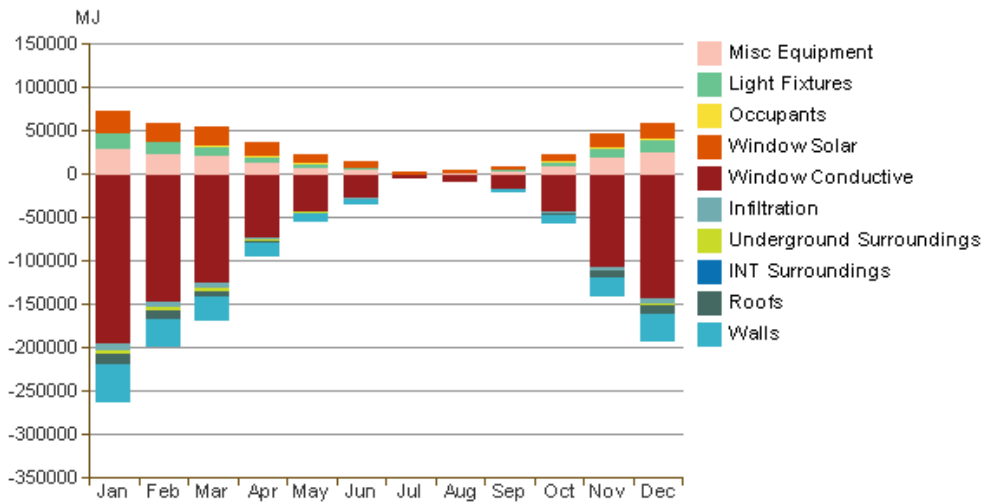
Energy Use: Fuel



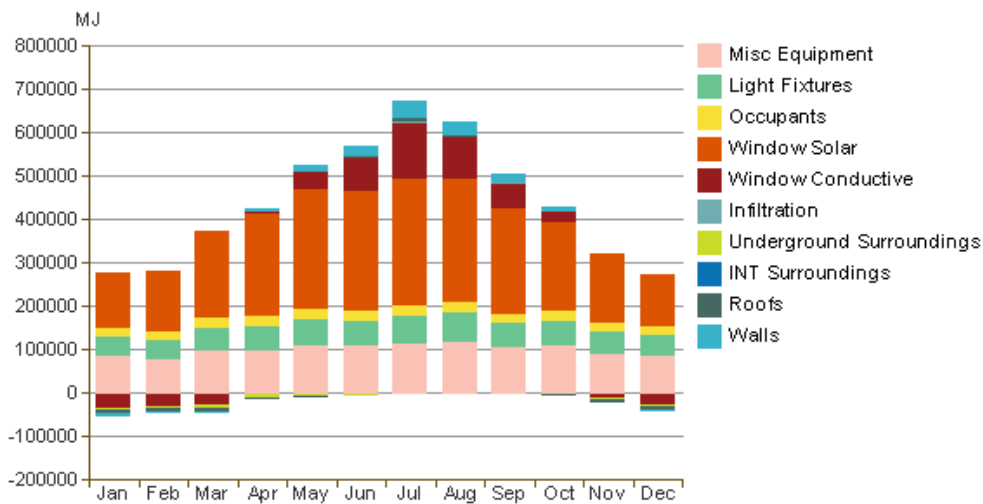
Energy Use: Electricity



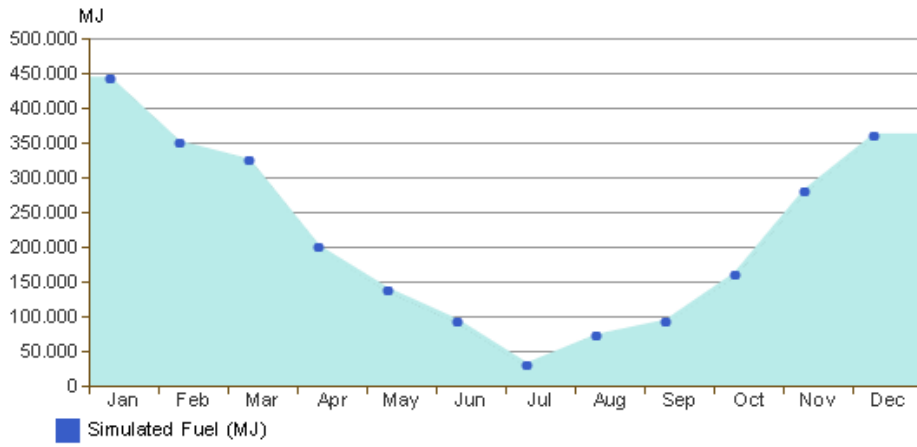
Monthly Heating Load



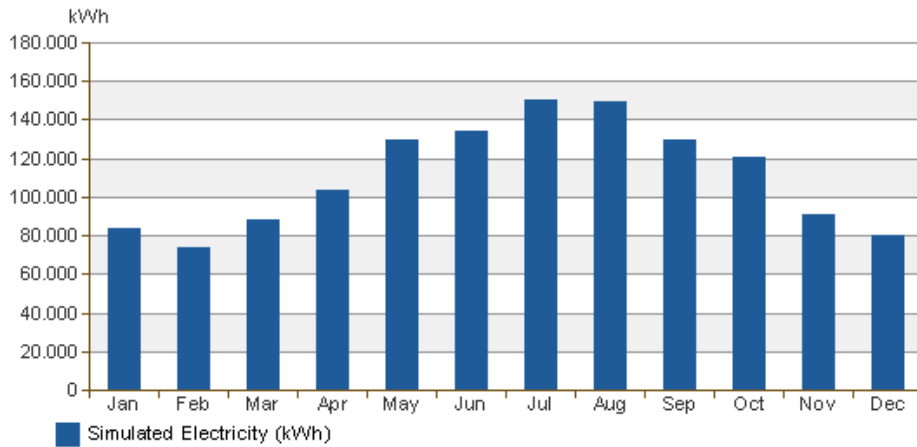
Monthly Cooling Load



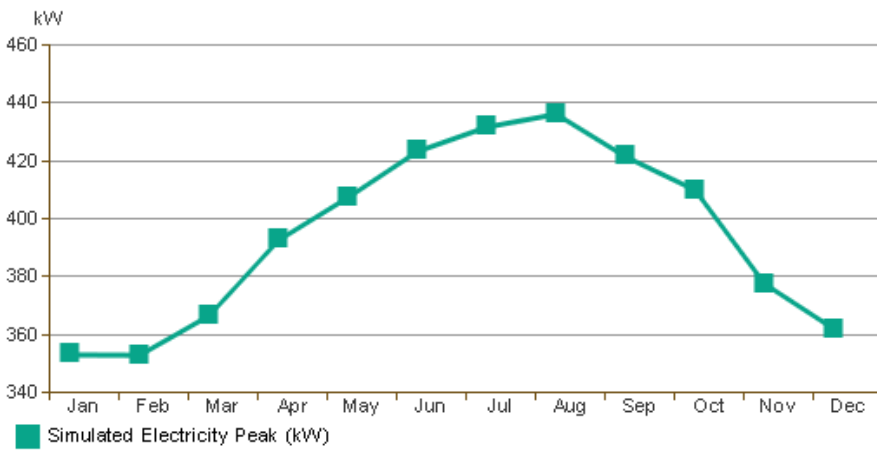
Monthly Fuel Consumption



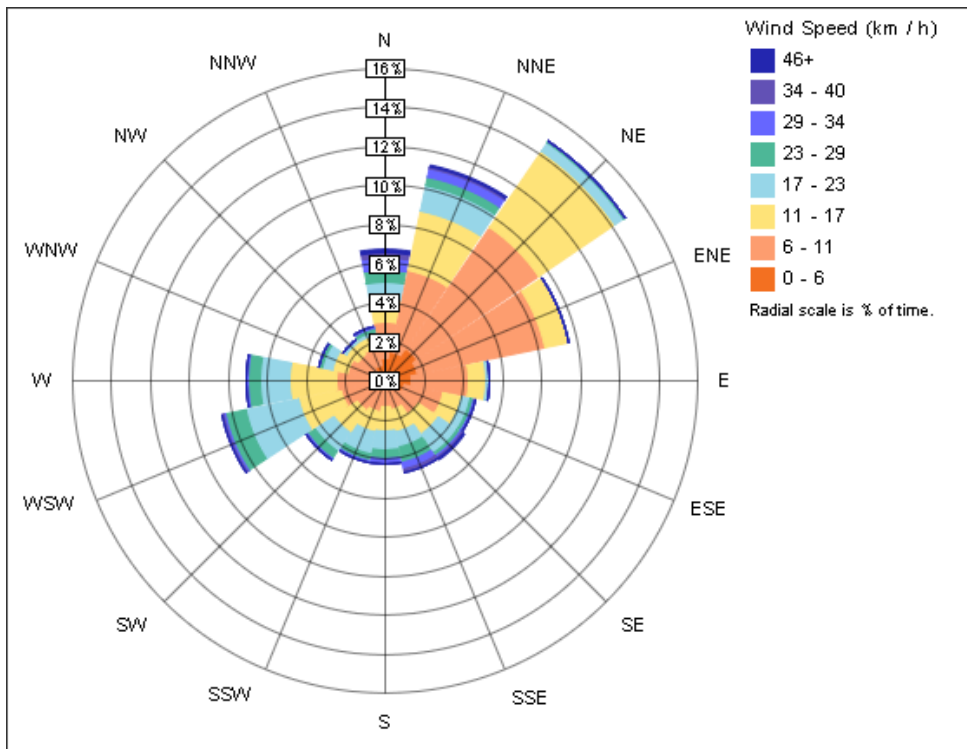
Monthly Electricity Consumption



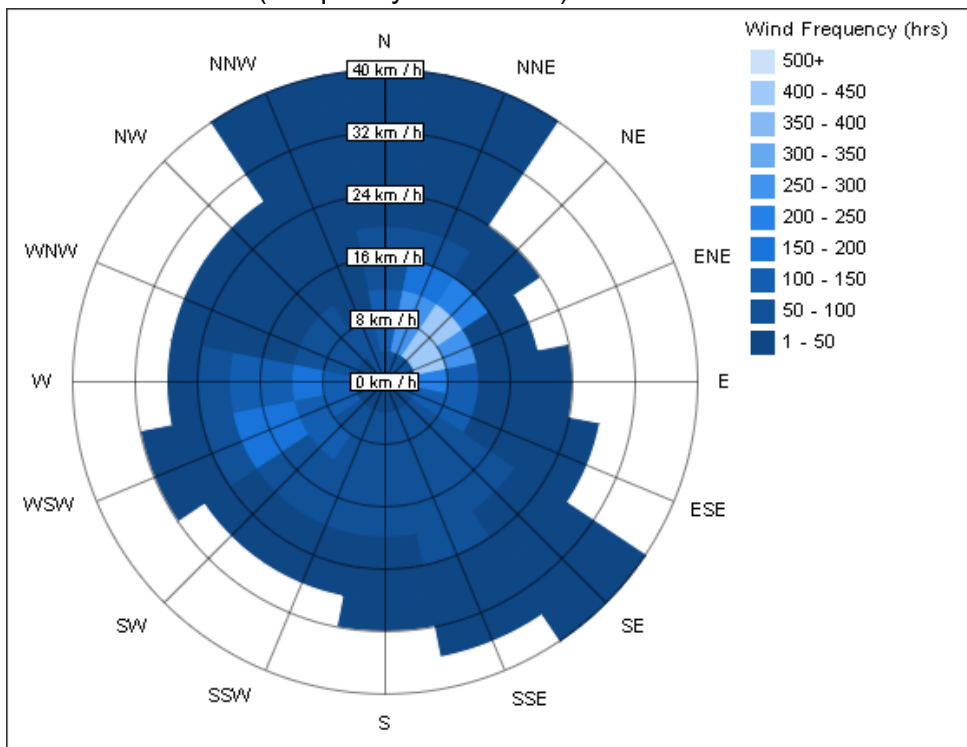
Monthly Peak Demand



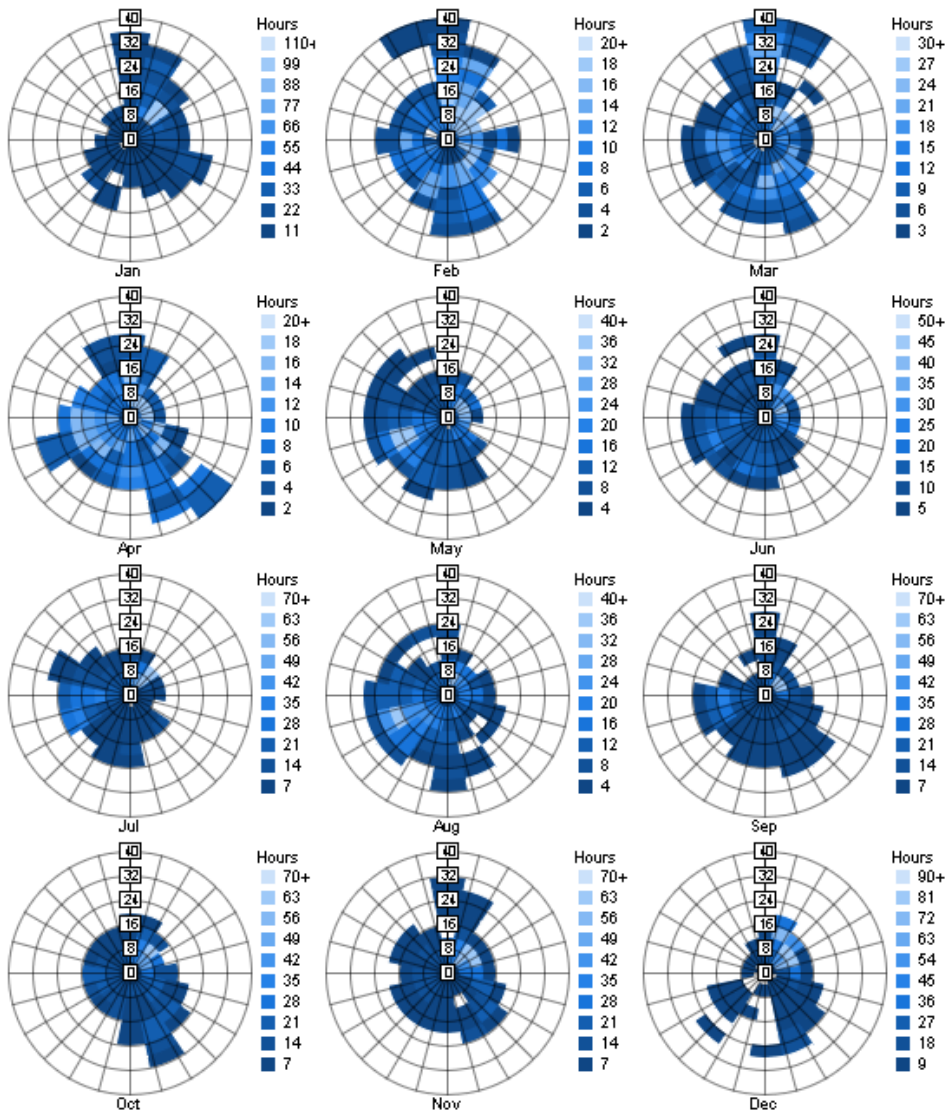
Annual Wind Rose (Speed Distribution)



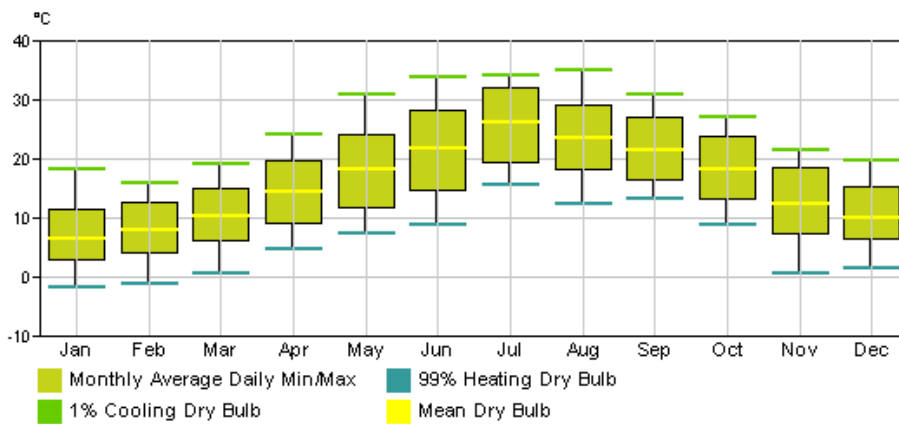
Annual Wind Rose (Frequency Distribution)



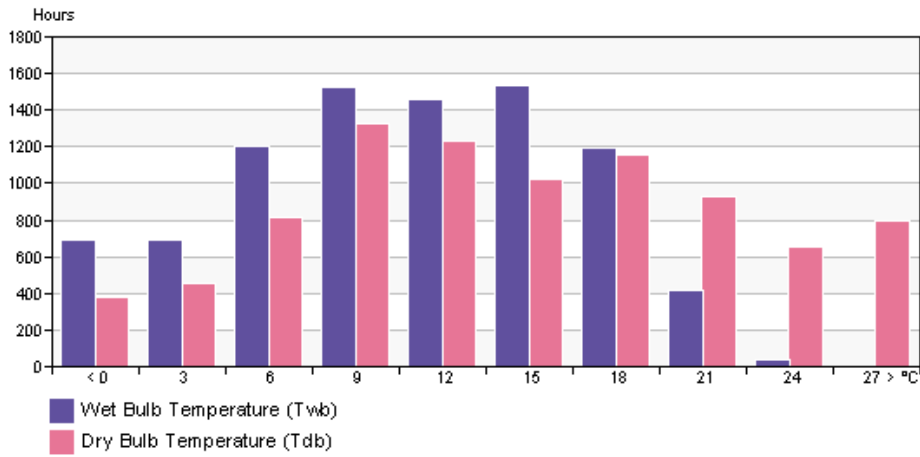
Monthly Wind Roses



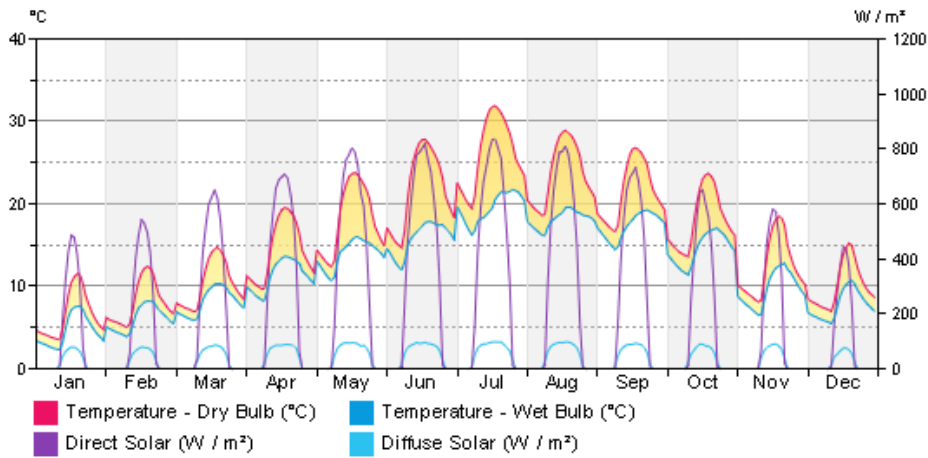
Monthly Design Data



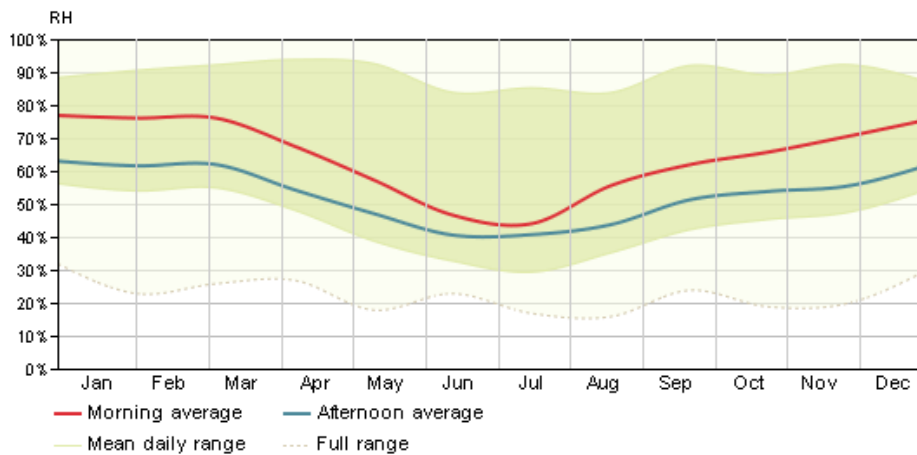
Annual Temperature Bins



Diurnal Weather Averages



Humidity



© Copyright 2011 Autodesk, Inc. All rights reserved. Portions of this software are copyrighted by James J. Hirsch & Associates, the Regents of the University of California, and others.