

Autodesk®

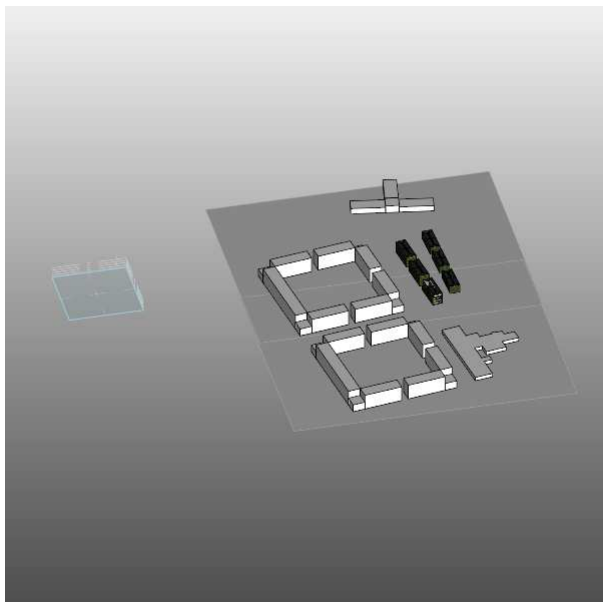
Selina modificato 31.051

Selina modificato 31.05 Analysis (1)

Analyzed at 5/31/2012 6:59:06 PM

Version 2013.0.25.942(DOE-2.2-44e4)

Mass



Building Performance Factors

Location:	Via Amleto Palermi, 00139 Roma, Italia
Weather Station:	160240
Outdoor Temperature:	Max: 37°C/Min: -2°C
Floor Area:	6,780 m ²
Exterior Wall Area:	5,445 m ²
Average Lighting Power:	7.53 W / m ²
People:	218 people
Exterior Window Ratio:	0.40
Electrical Cost:	\$0.28 / kWh
Fuel Cost:	\$1.41 / Therm

Energy Use Intensity

Electricity EUI:	189 kWh / sm / yr
Fuel EUI:	663 MJ / sm / yr
Total EUI:	1,345 MJ / sm / yr

Life Cycle Energy Use/Cost

Life Cycle Electricity Use:	38,537,760 kWh
Life Cycle Fuel Use:	134,880,005 MJ
Life Cycle Energy Cost:	\$5,646,343

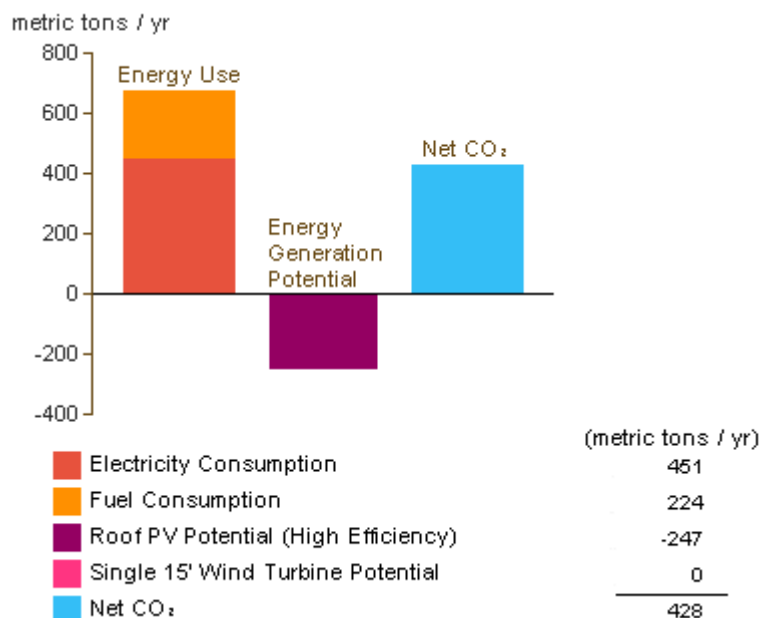
*30-year life and 6.1% discount rate for costs

Renewable Energy Potential

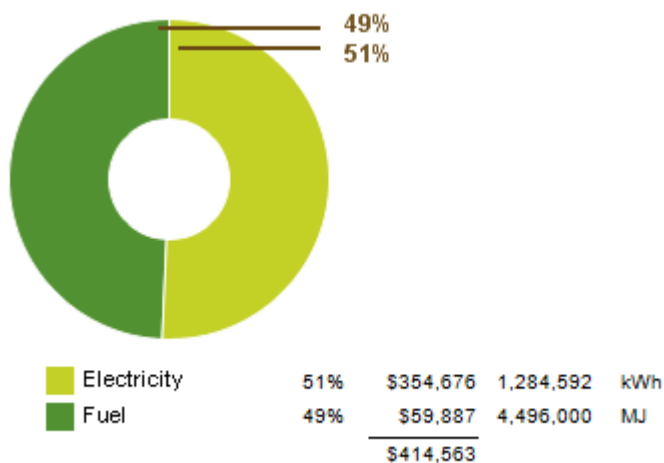
Roof Mounted PV System (Low efficiency):	234,818 kWh / yr
Roof Mounted PV System (Medium efficiency):	469,636 kWh / yr
Roof Mounted PV System (High efficiency):	704,454 kWh / yr
Single 15' Wind Turbine Potential:	837 kWh / yr

*PV efficiencies are assumed to be 5%, 10% and 15% for low, medium and high efficiency systems

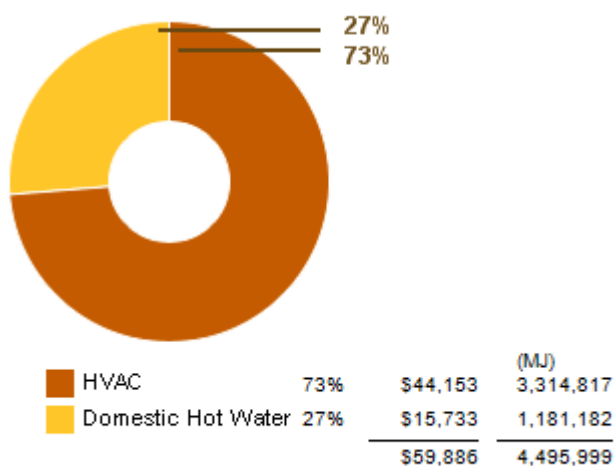
Annual Carbon Emissions



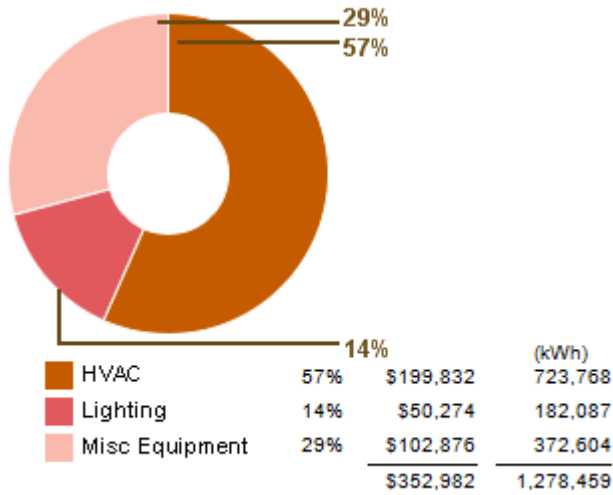
Annual Energy Use/Cost



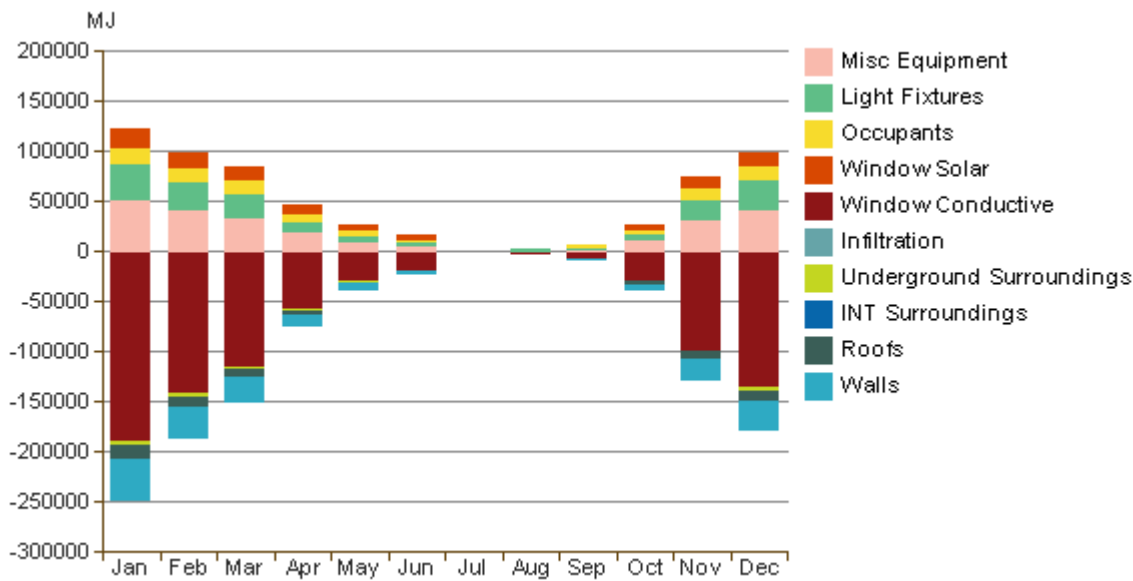
Energy Use: Fuel



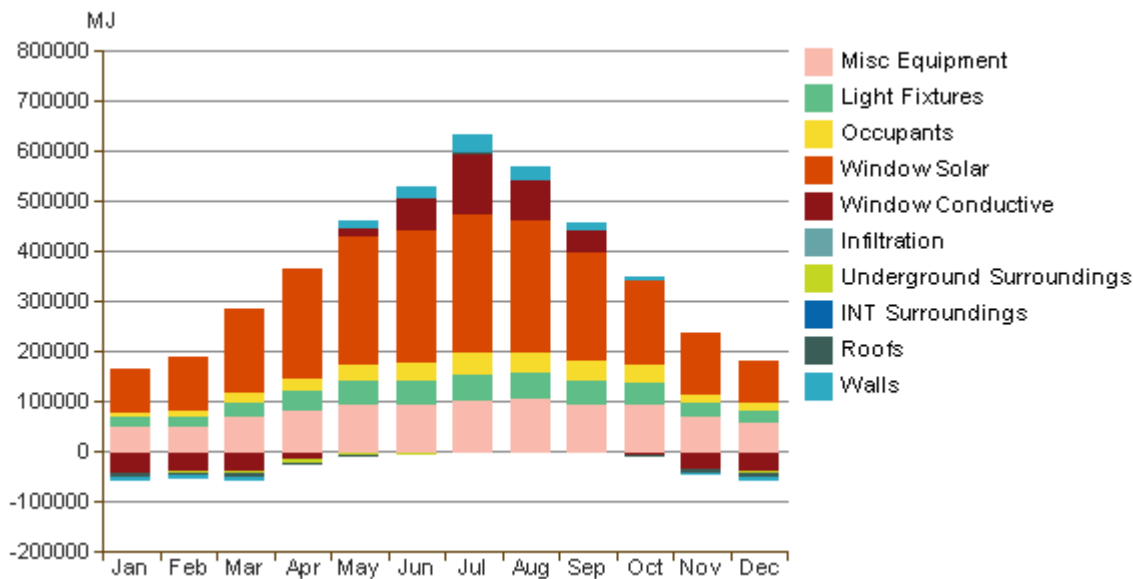
Energy Use: Electricity



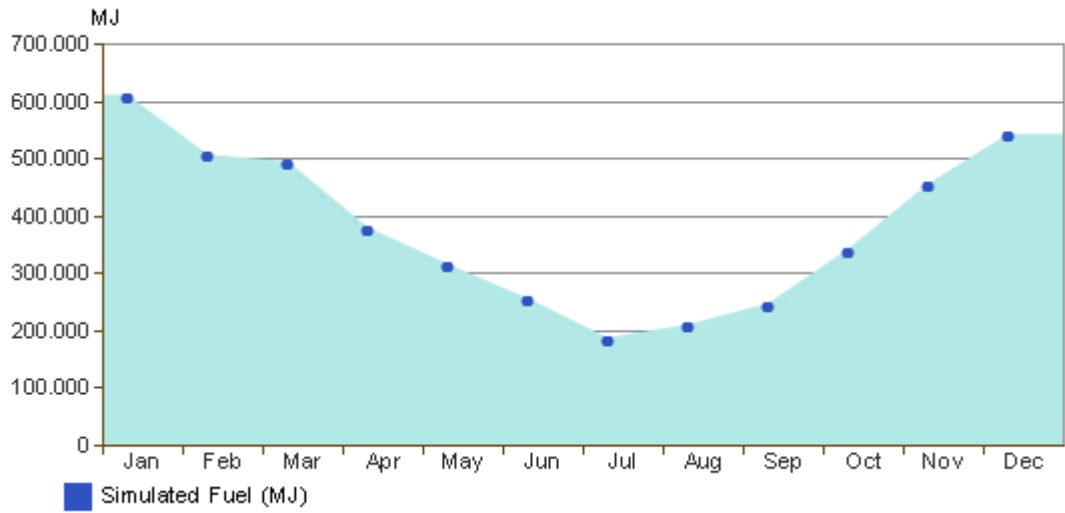
Monthly Heating Load



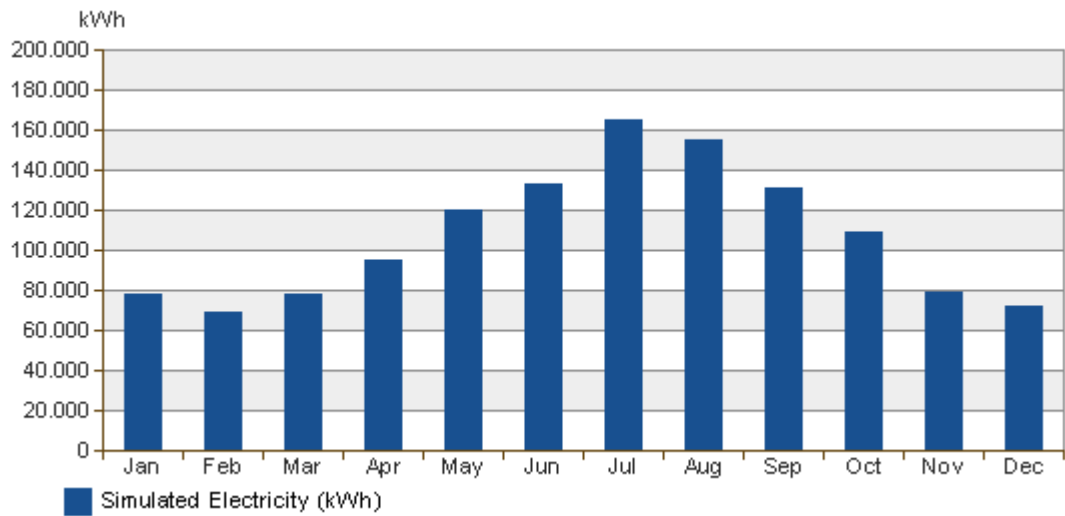
Monthly Cooling Load



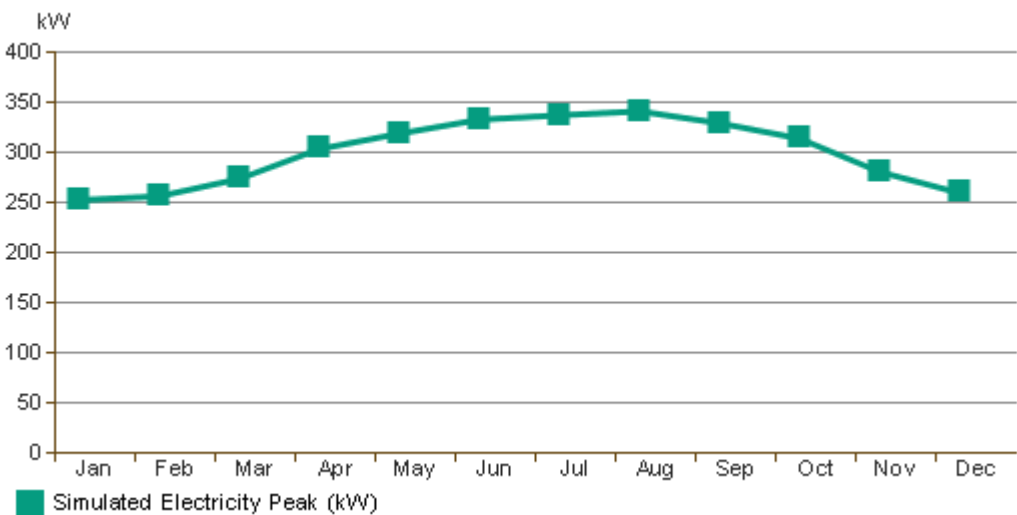
Monthly Fuel Consumption



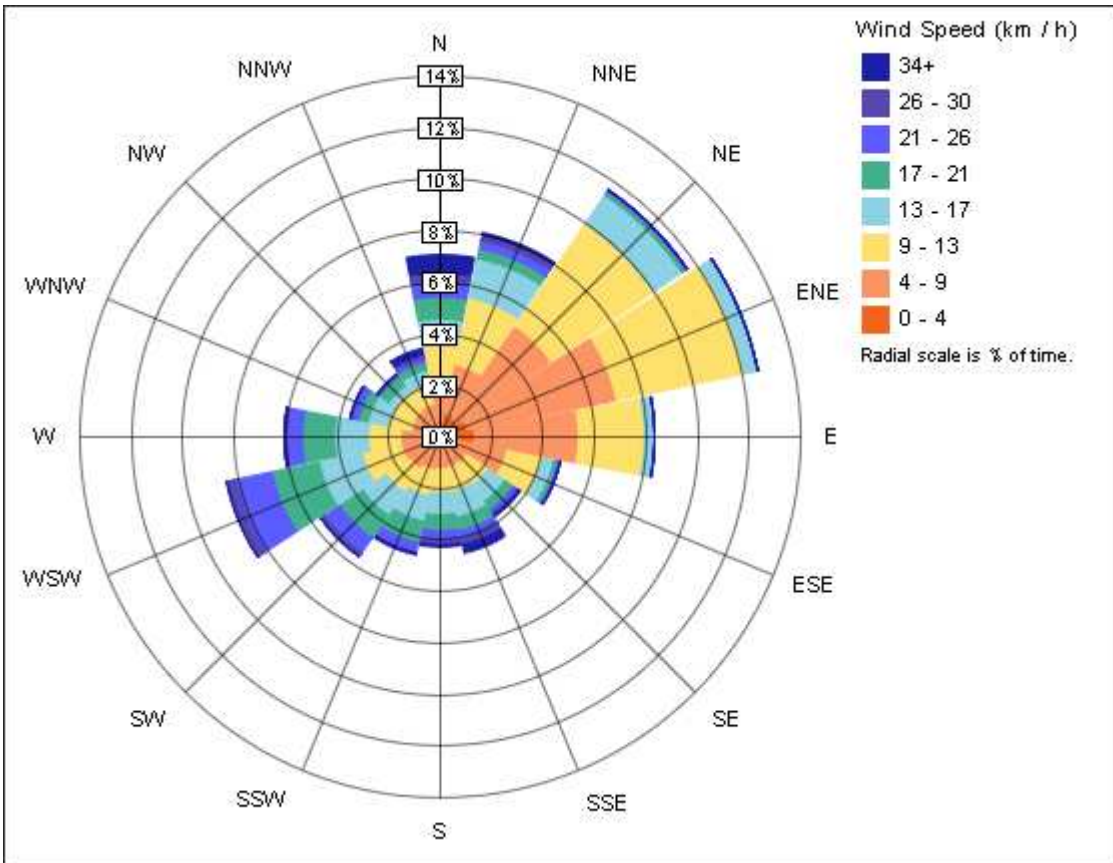
Monthly Electricity Consumption



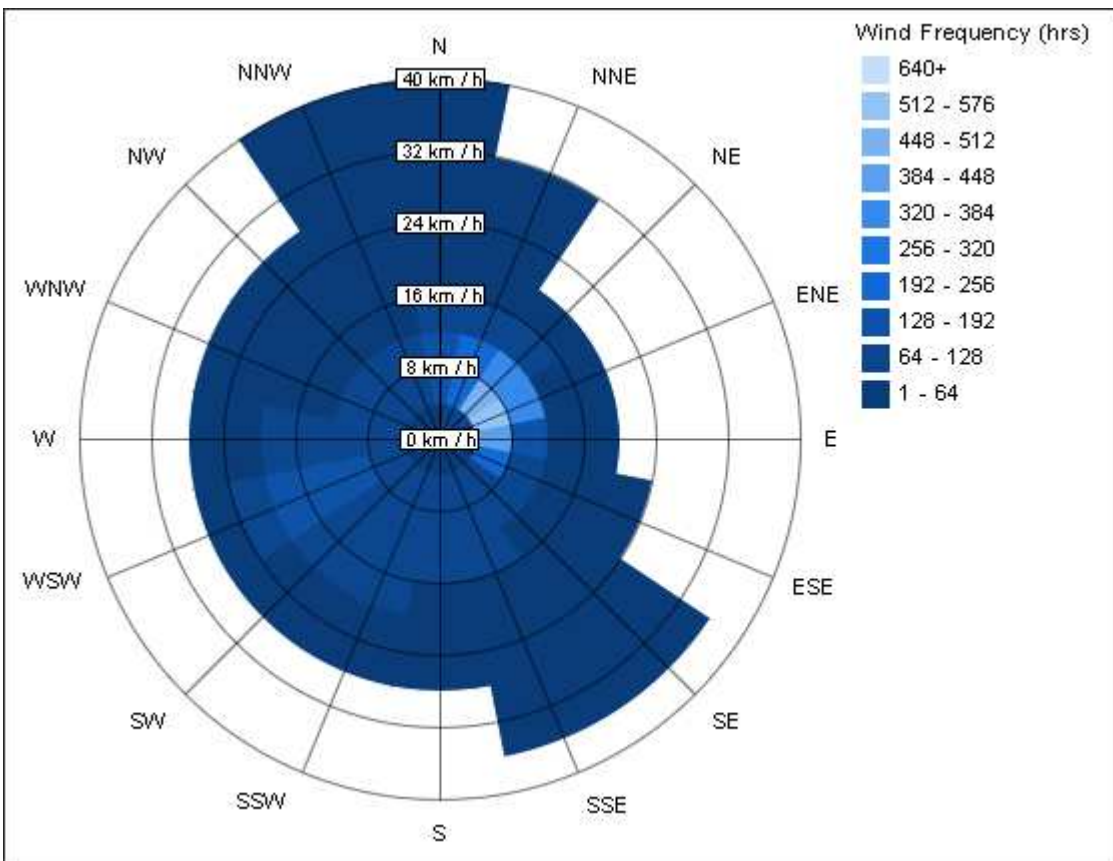
Monthly Peak Demand



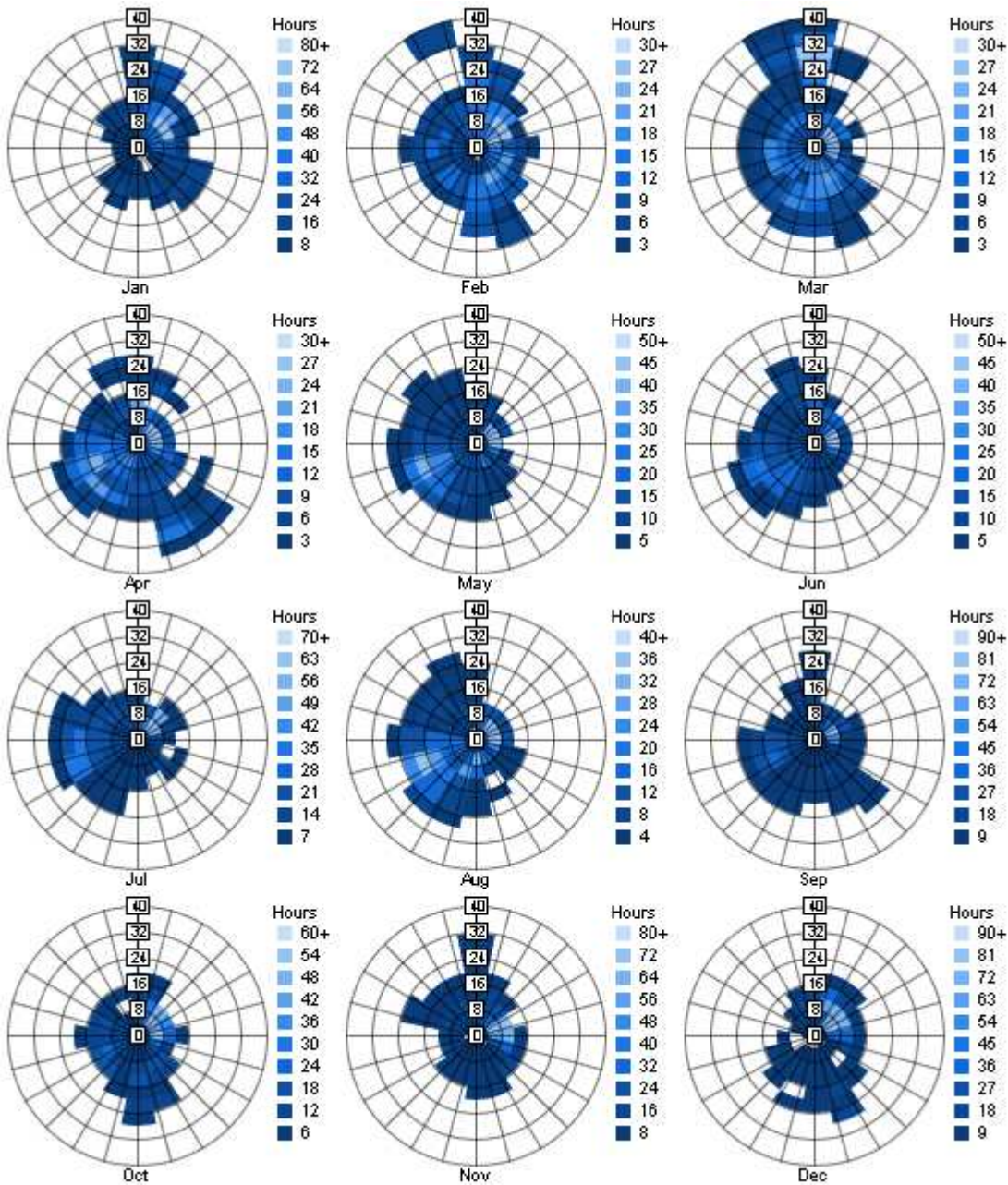
Annual Wind Rose (Speed Distribution)



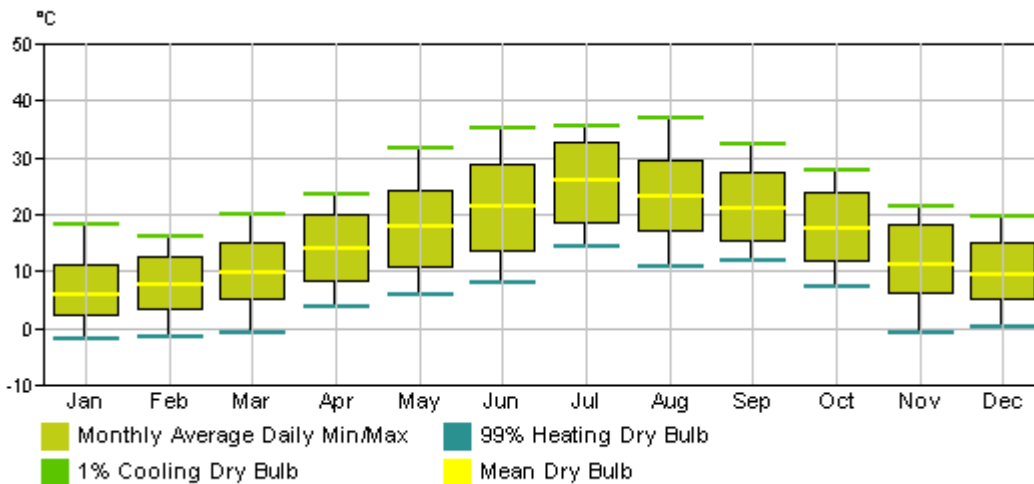
Annual Wind Rose (Frequency Distribution)



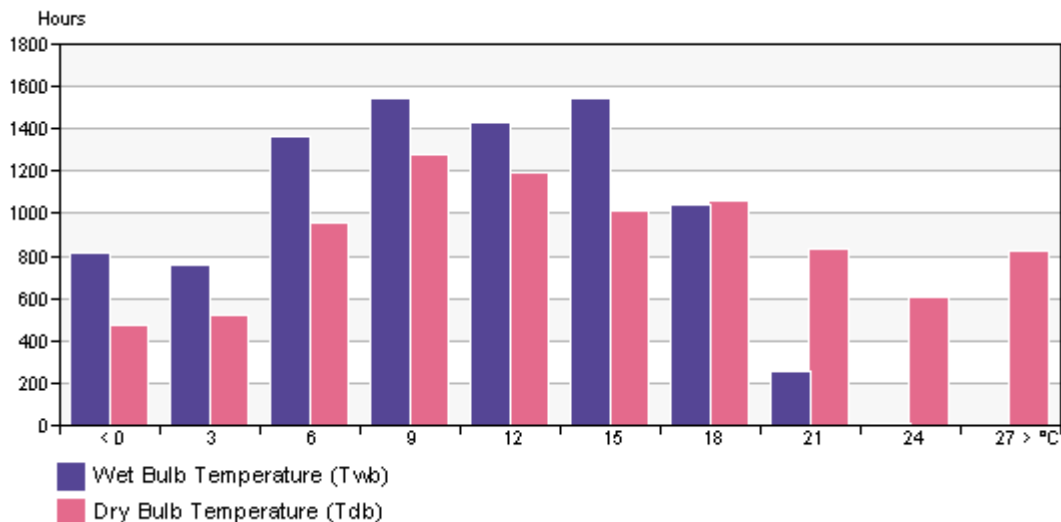
Monthly Wind Roses



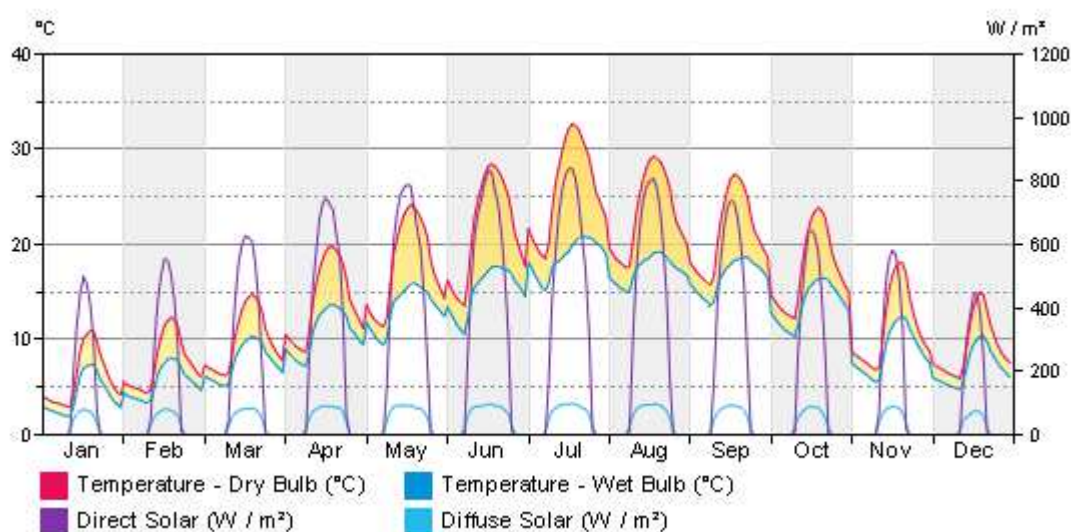
Monthly Design Data



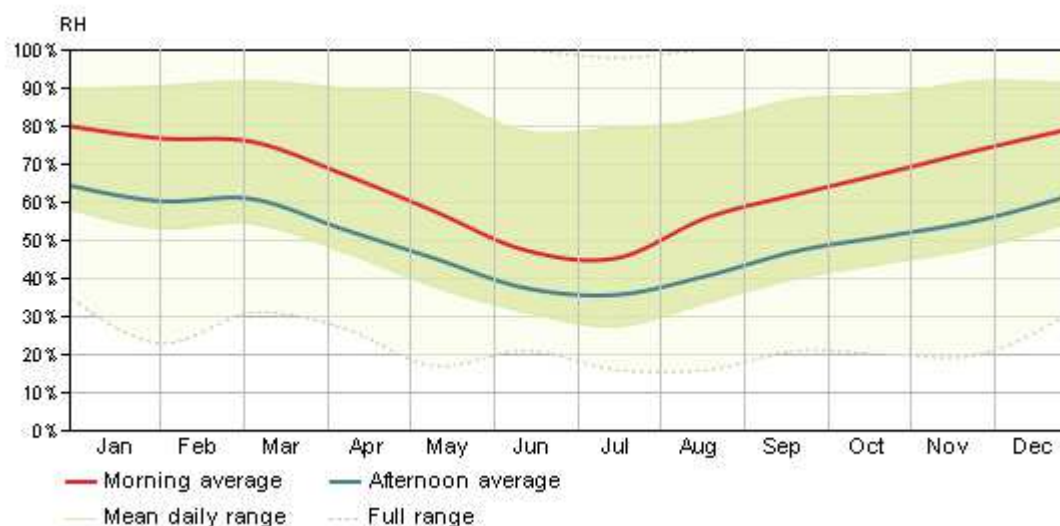
Annual Temperature Bins



Diurnal Weather Averages



Humidity



© Copyright 2011 Autodesk, Inc. All rights reserved. Portions of this software are copyrighted by James J. Hirsch & Associates, the Regents of the University of California, and others.

Revit Conceptual Energy Analysis Data