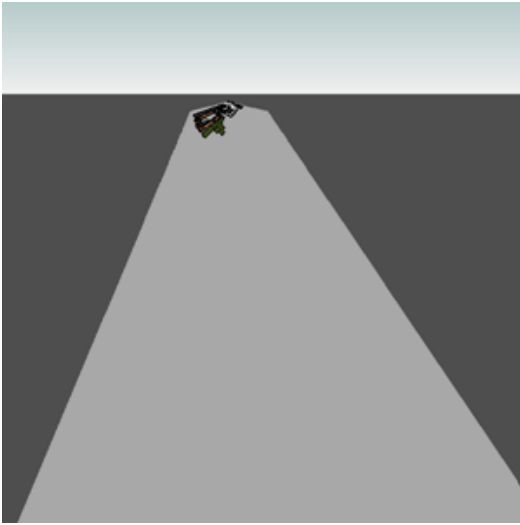


Project14

progetto3

Analyzed at 6/8/2012 9:20:24 AM

Mass



Building Performance Factors

Location:	Via Amleto Palermi, 00139 Roma, Italia
Weather Station:	160240
Outdoor Temperature:	Max: 37°C/Min: -2°C
Floor Area:	6,066 m ²
Exterior Wall Area:	6,859 m ²
Average Lighting Power:	7.21 W / m ²
People:	243 people
Exterior Window Ratio:	0.30
Electrical Cost:	\$0.28 / kWh
Fuel Cost:	\$1.41 / Therm

Energy Use Intensity

Electricity EUI:	129 kWh / sm / yr
Fuel EUI:	390 MJ / sm / yr
Total EUI:	856 MJ / sm / yr

Life Cycle Energy Use/Cost

Life Cycle Electricity Use:	28,709,985 kWh
Life Cycle Fuel Use:	86,725,383 MJ
Life Cycle Energy Cost:	\$4,123,233

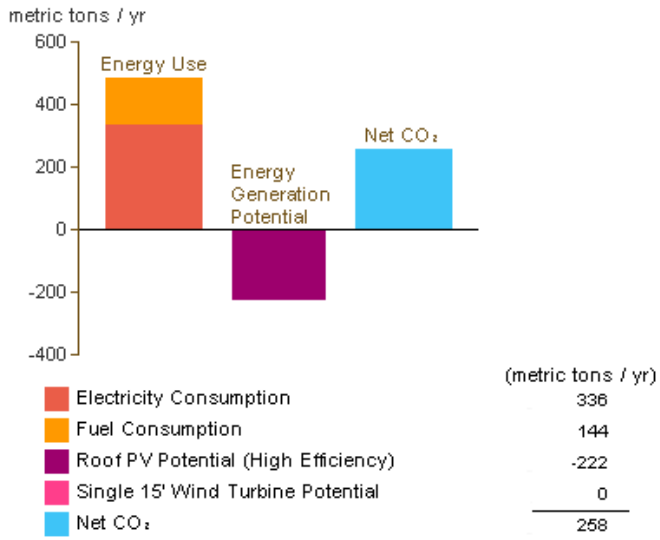
*30-year life and 6.1% discount rate for costs

Renewable Energy Potential

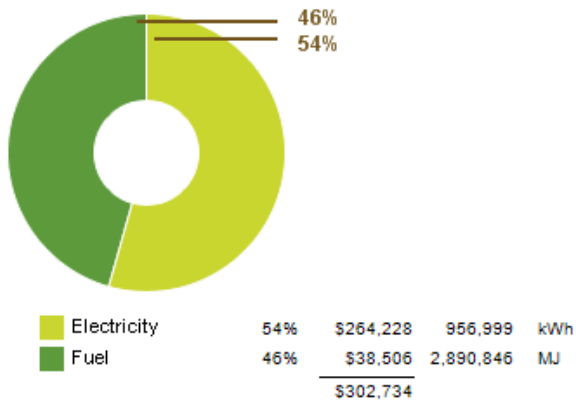
Roof Mounted PV System (Low efficiency):	211,028 kWh / yr
Roof Mounted PV System (Medium efficiency):	422,055 kWh / yr
Roof Mounted PV System (High efficiency):	633,083 kWh / yr
Single 15' Wind Turbine Potential:	837 kWh / yr

*PV efficiencies are assumed to be 5%, 10% and 15% for low, medium and high efficiency systems

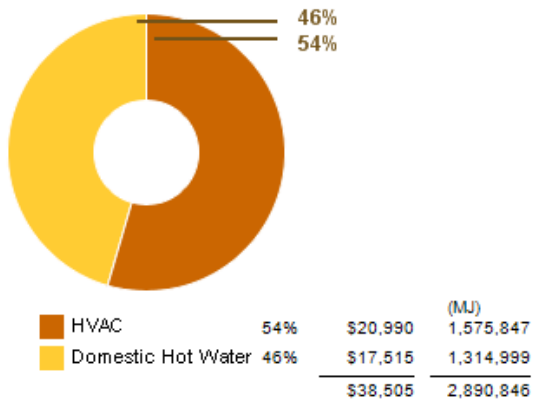
Annual Carbon Emissions



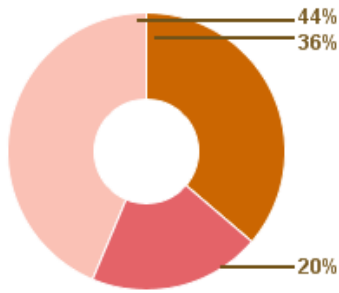
Annual Energy Use/Cost



Energy Use: Fuel

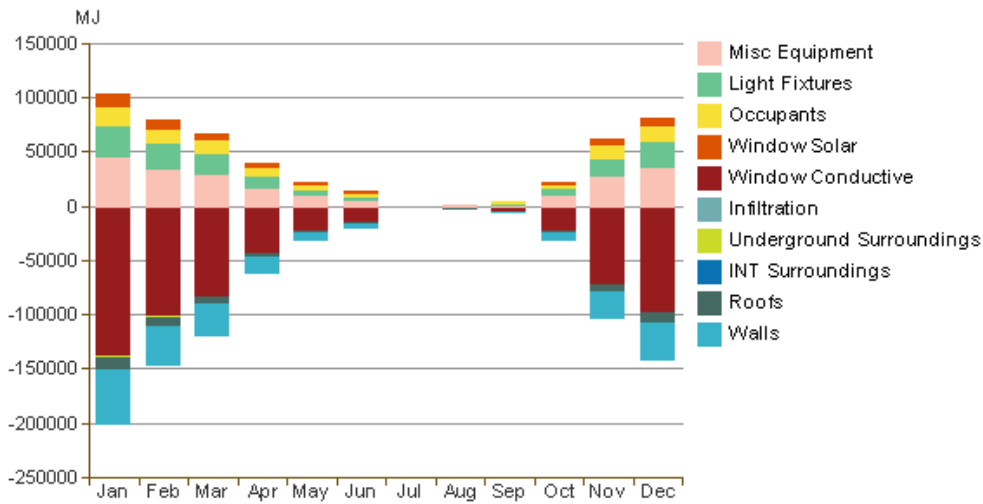


Energy Use: Electricity

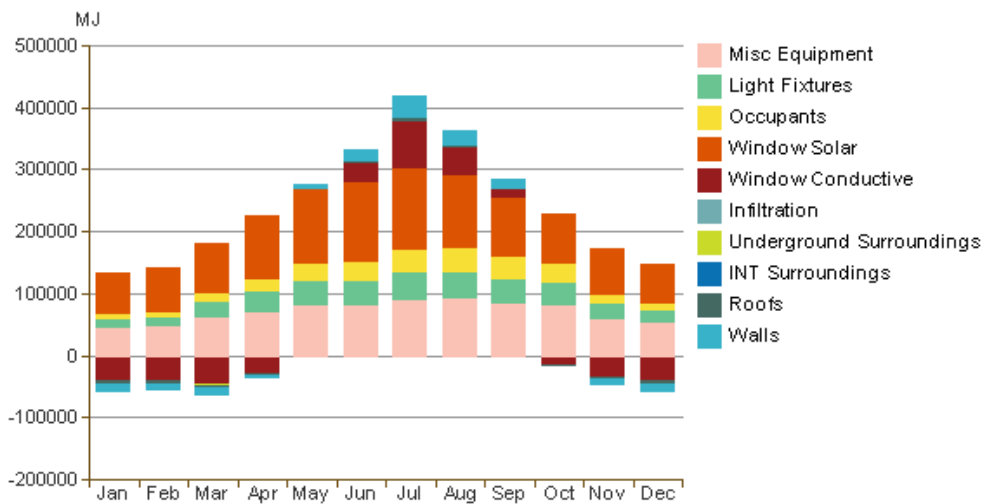


			(kWh)
HVAC	36%	\$95,192	344,774
Lighting	20%	\$52,706	190,897
Misc Equipment	44%	\$114,635	415,196
		\$262,533	950,867

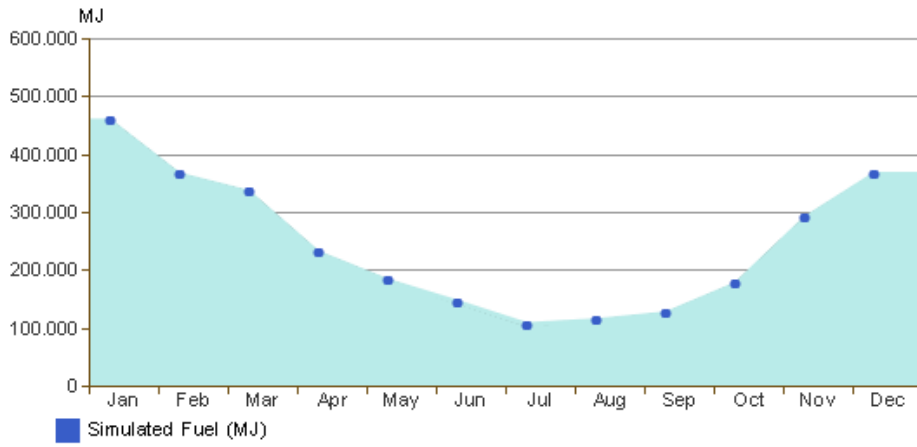
Monthly Heating Load



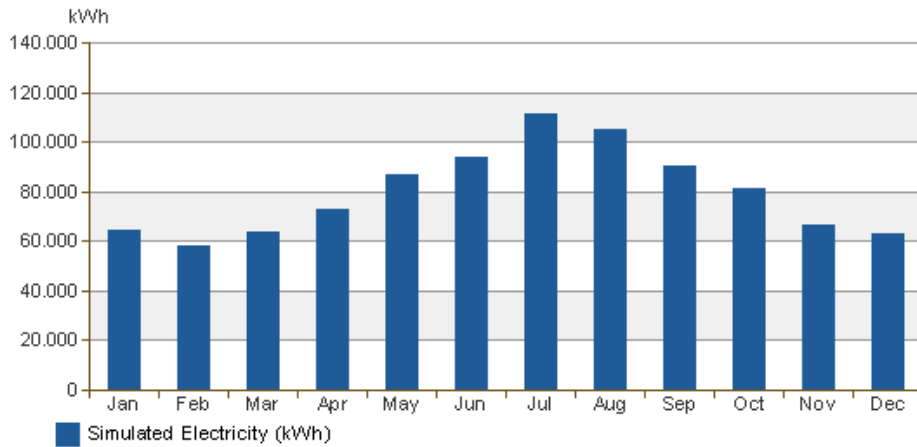
Monthly Cooling Load



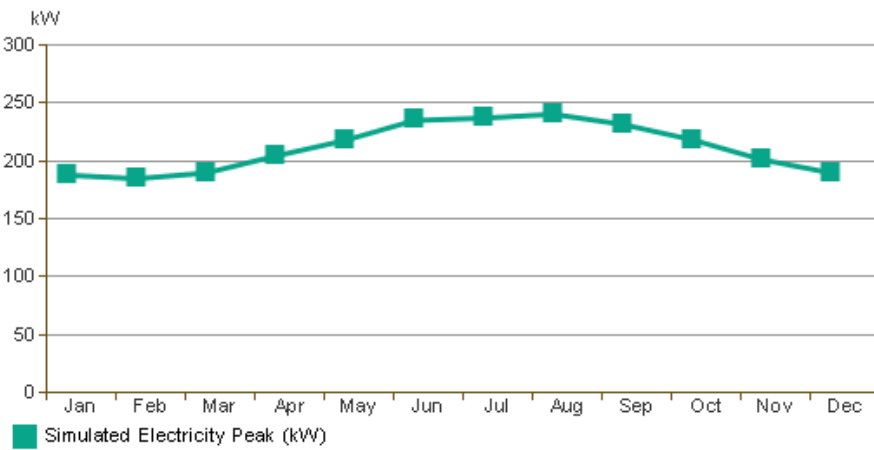
Monthly Fuel Consumption



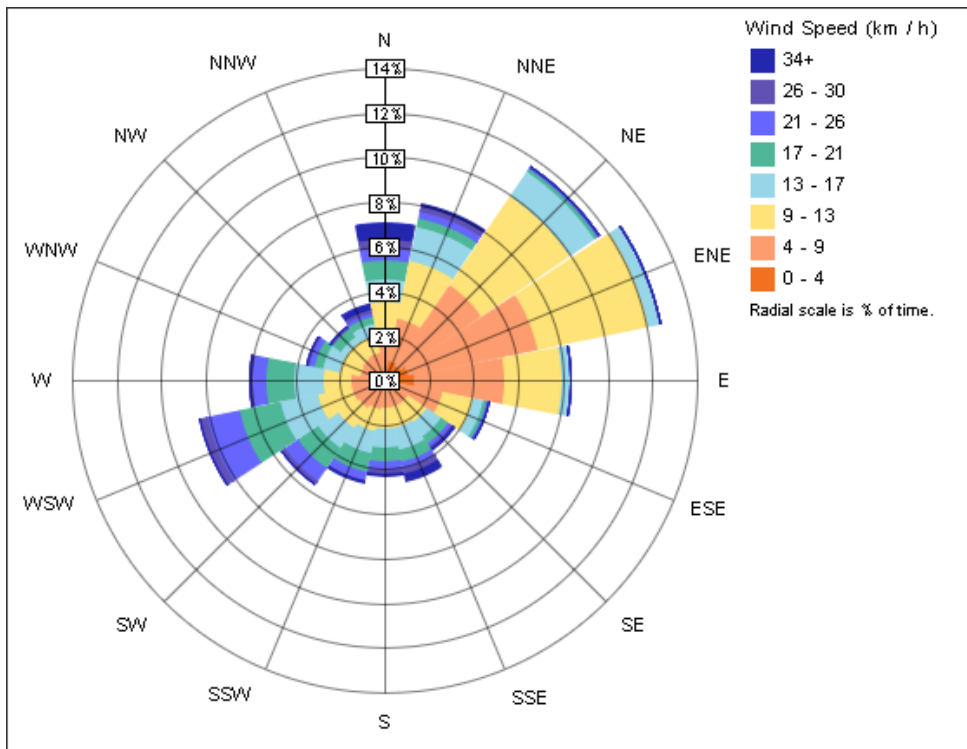
Monthly Electricity Consumption



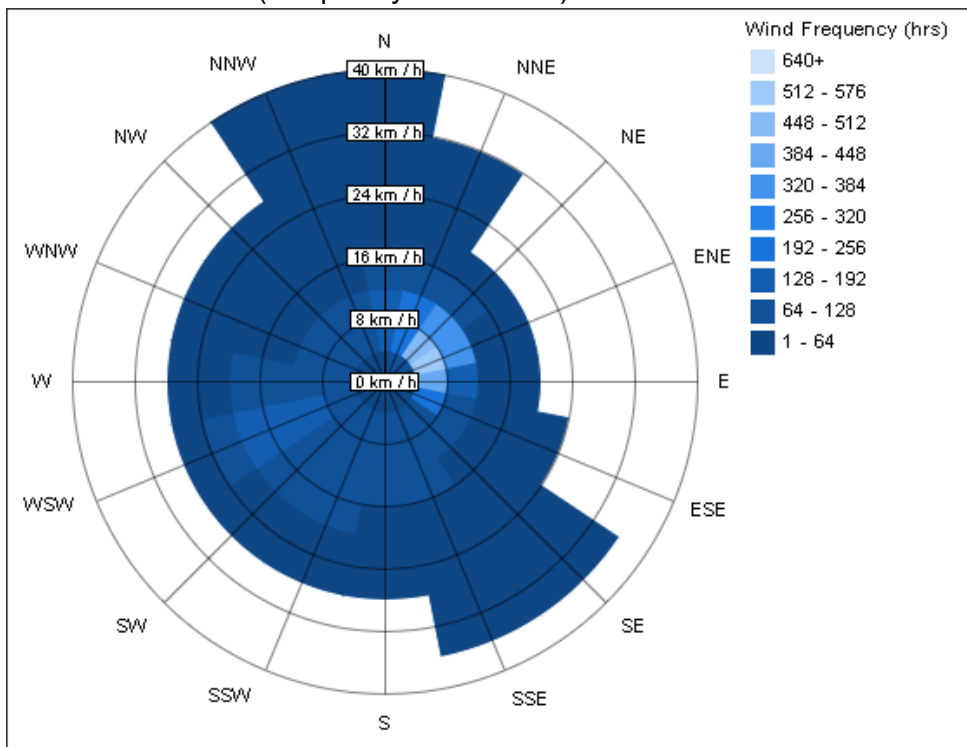
Monthly Peak Demand



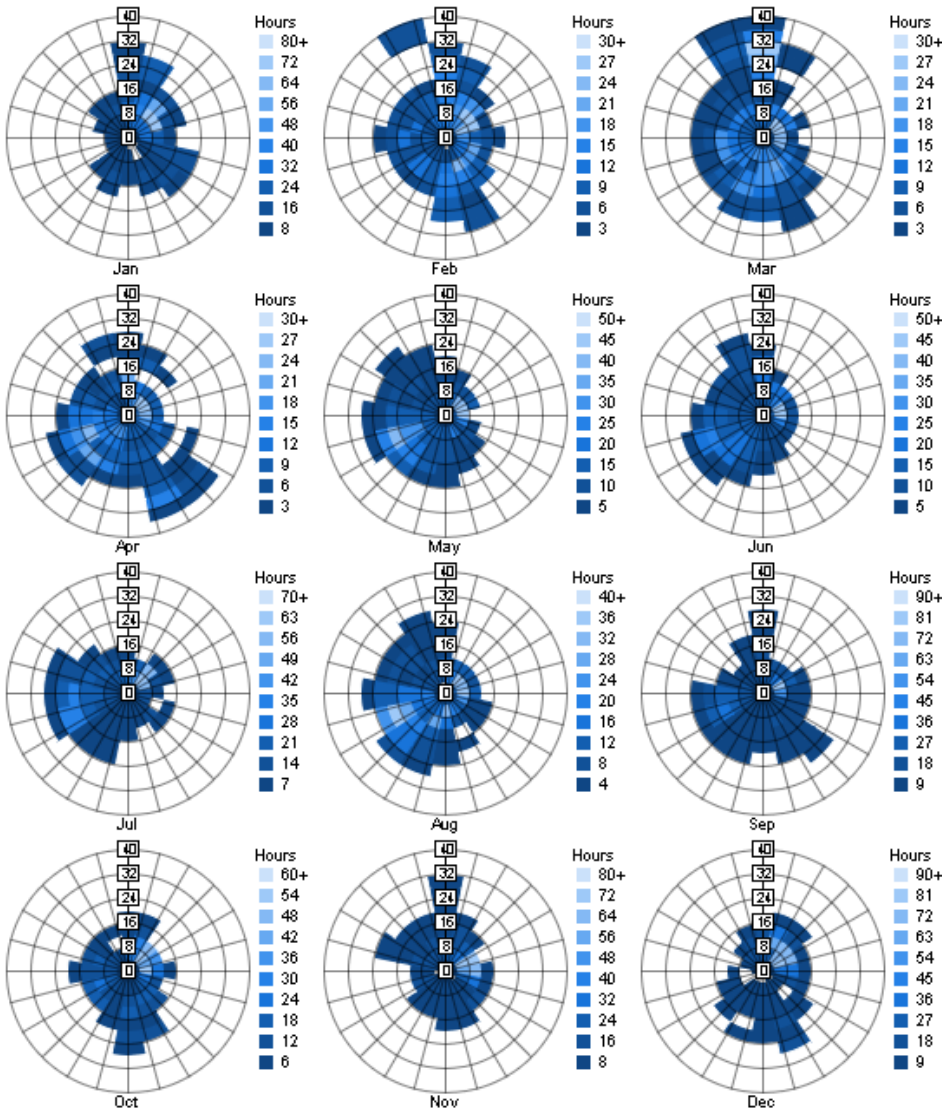
Annual Wind Rose (Speed Distribution)



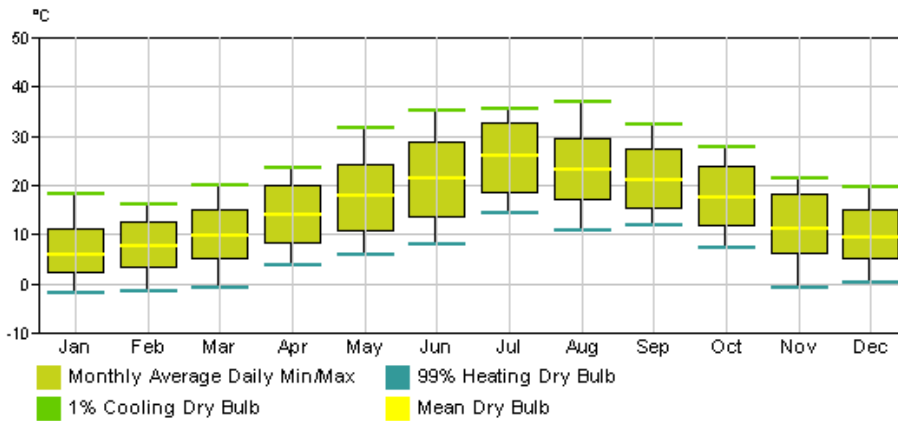
Annual Wind Rose (Frequency Distribution)



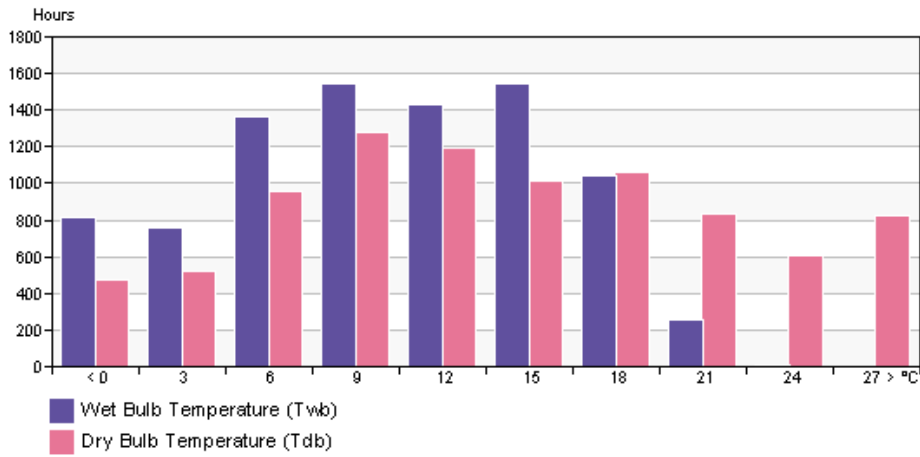
Monthly Wind Roses



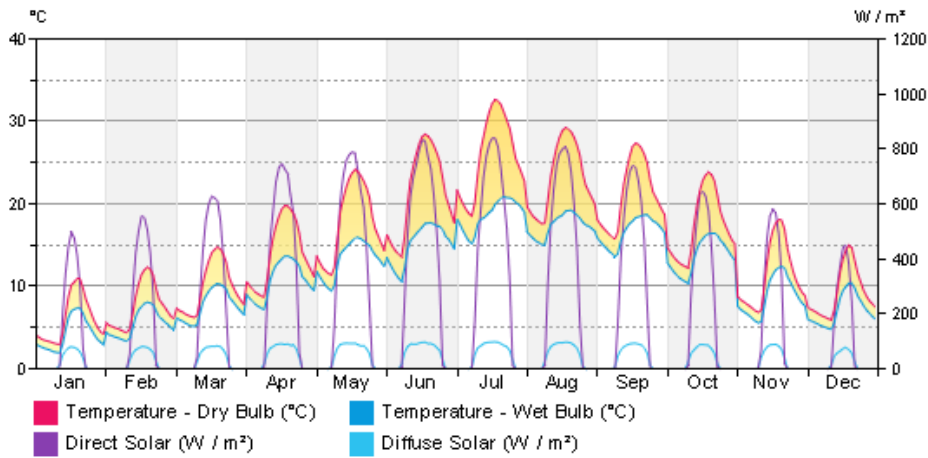
Monthly Design Data



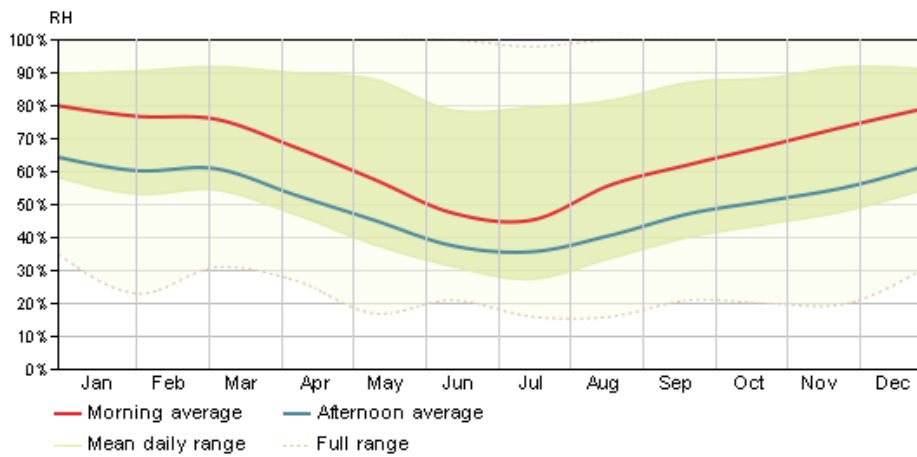
Annual Temperature Bins



Diurnal Weather Averages



Humidity



© Copyright 2011 Autodesk, Inc. All rights reserved. Portions of this software are copyrighted by James J. Hirsch & Associates, the Regents of the University of California, and others.