

Autodesk®

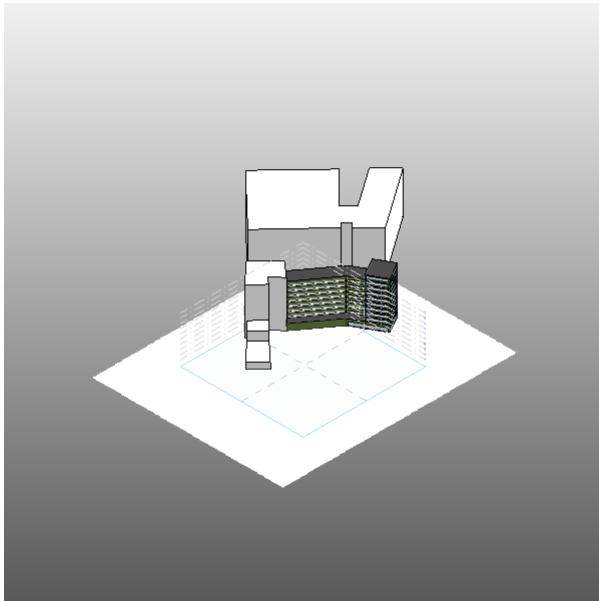
Consegna 3

Rendimento energetico_modifica

Analyzed at 6/5/2012 10:27:22 PM

Version 2013.0.25.942(DOE-2.2-44e4)

Mass



Building Performance Factors

| | |
|-------------------------|--------------------------------|
| Location: | Via Assisi, 00181 Roma, Italia |
| Weather Station: | 160240 |
| Outdoor Temperature: | Max: 37°C/Min: -2°C |
| Floor Area: | 4,616 m ² |
| Exterior Wall Area: | 3,631 m ² |
| Average Lighting Power: | 10.87 W / m ² |
| People: | 156 people |
| Exterior Window Ratio: | 0.36 |
| Electrical Cost: | \$0.28 / kWh |
| Fuel Cost: | \$1.41 / Therm |

Energy Use Intensity

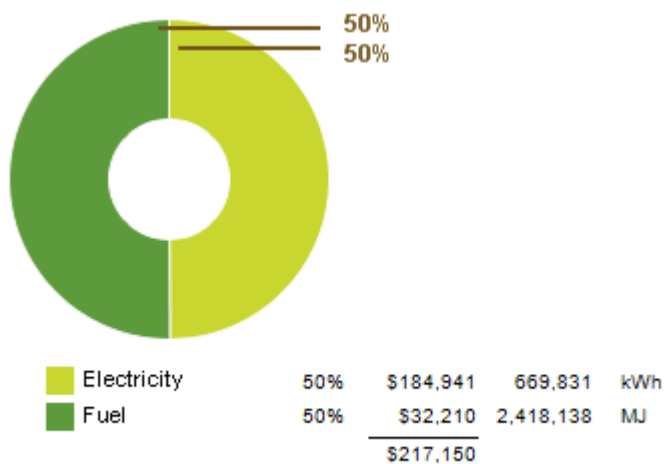
| | |
|------------------|--------------------|
| Electricity EUI: | 145 kWh / sm / yr |
| Fuel EUI: | 524 MJ / sm / yr |
| Total EUI: | 1,046 MJ / sm / yr |

Life Cycle Energy Use/Cost

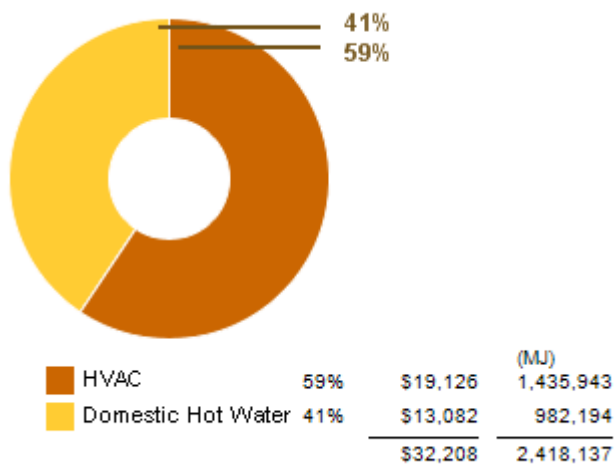
| | |
|-----------------------------|----------------|
| Life Cycle Electricity Use: | 20,094,957 kWh |
| Life Cycle Fuel Use: | 72,544,143 MJ |
| Life Cycle Energy Cost: | \$2,957,586 |

*30-year life and 6.1% discount rate for costs

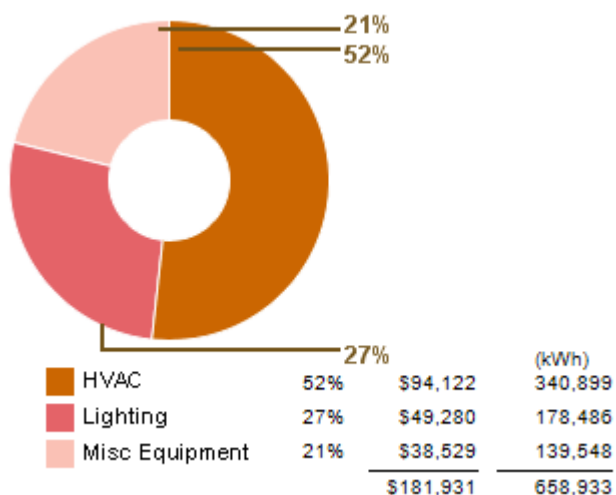
Annual Energy Use/Cost



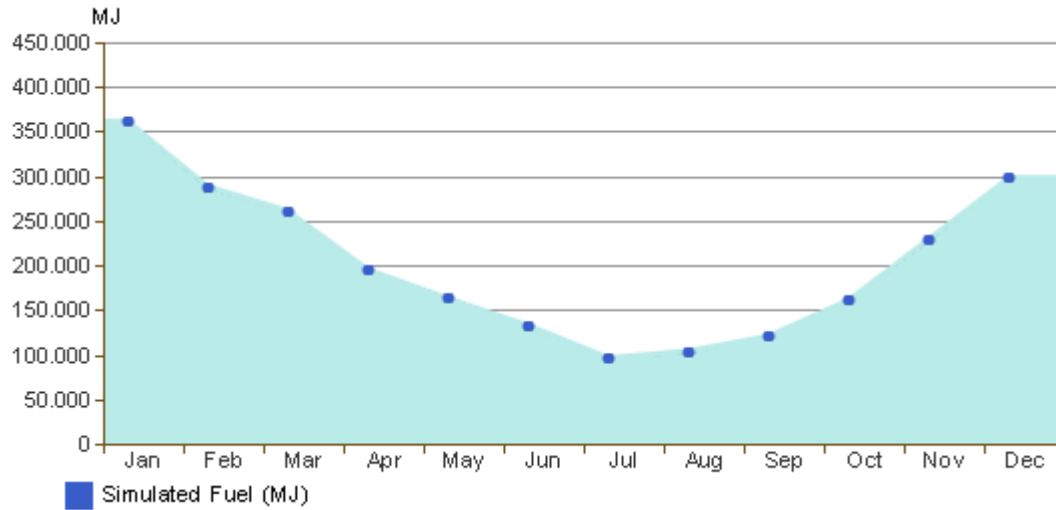
Energy Use: Fuel



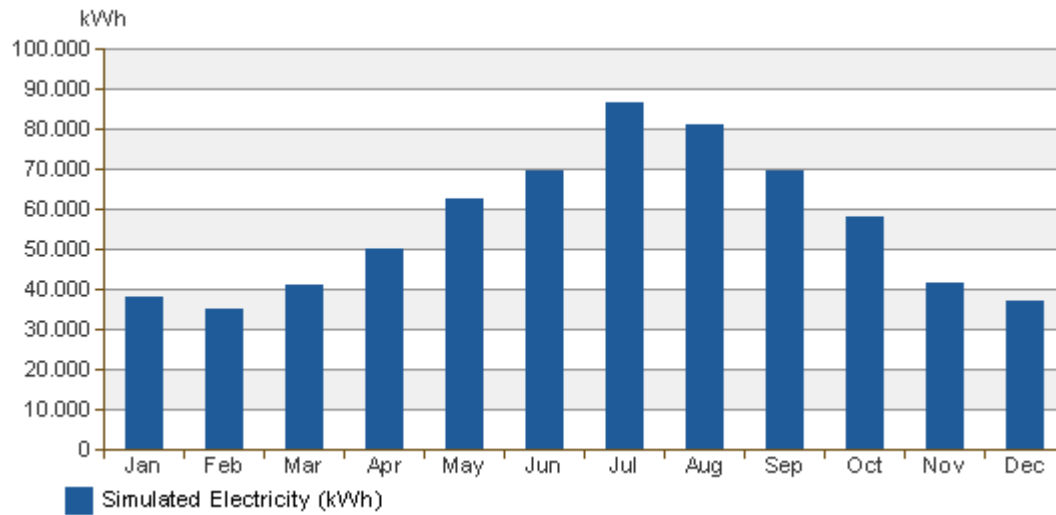
Energy Use: Electricity



Monthly Fuel Consumption



Monthly Electricity Consumption



© Copyright 2011 Autodesk, Inc. All rights reserved. Portions of this software are copyrighted by James J. Hirsch & Associates, the Regents of the University of California, and others.

Revit Conceptual Energy Analysis Data