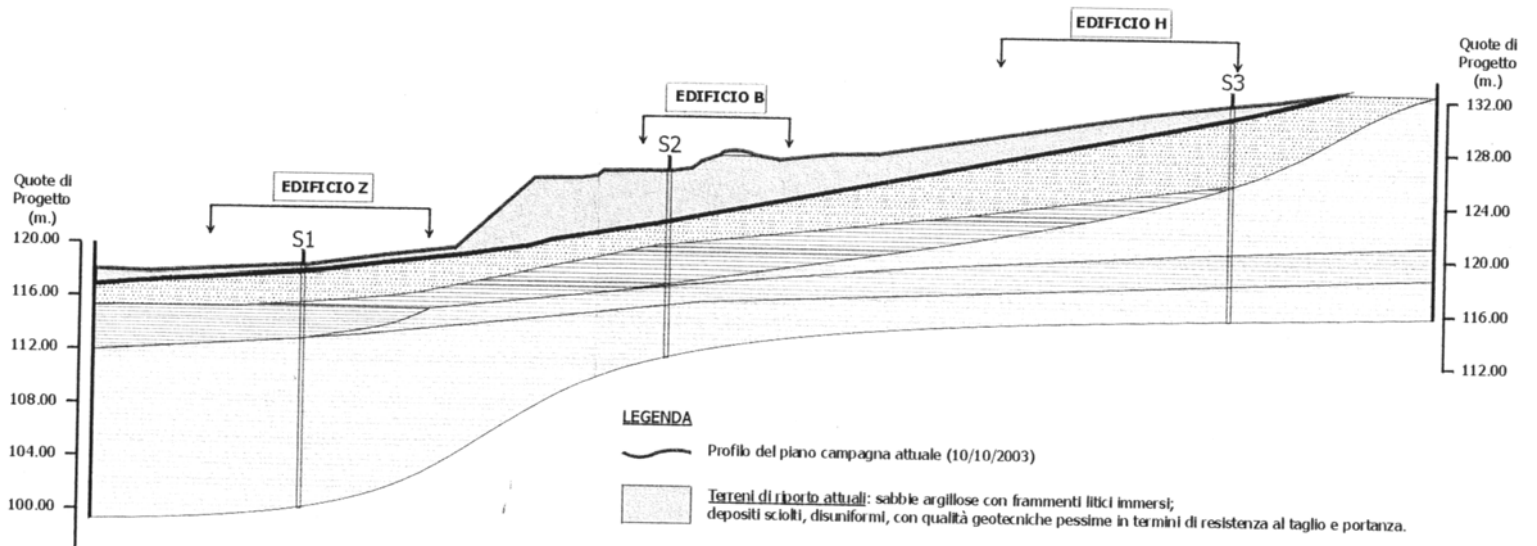
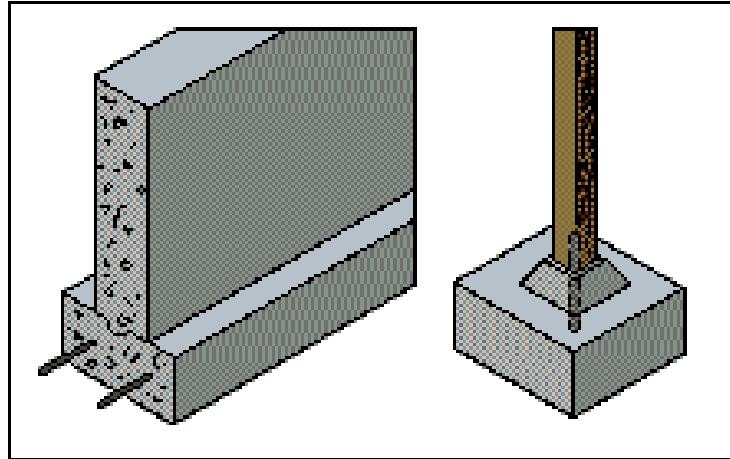
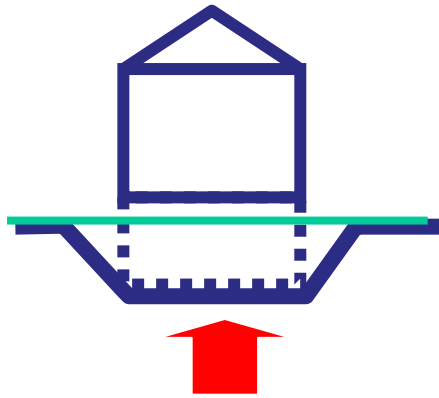
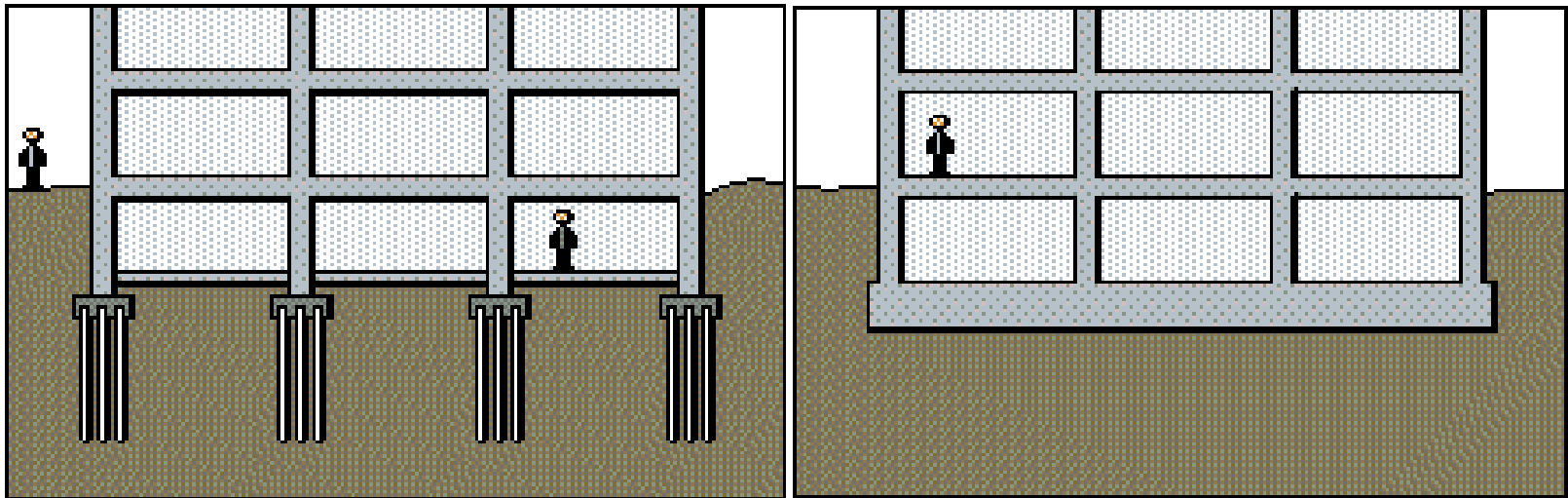


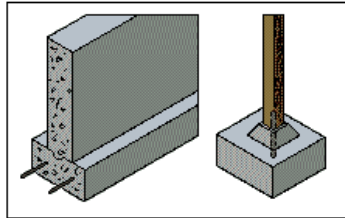
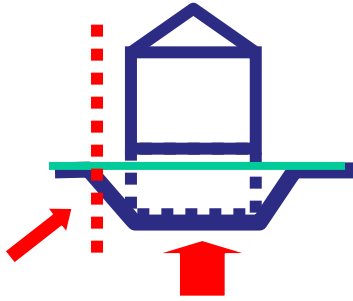
LE INDAGINI GEOGNOSICHE





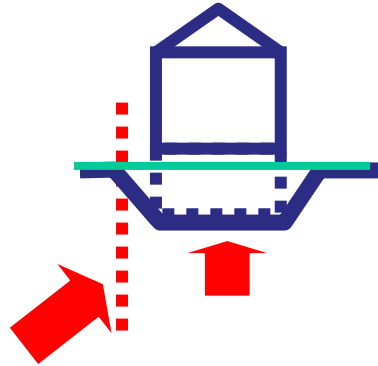
Tipologia di fondazione=f(portanza del terreno)







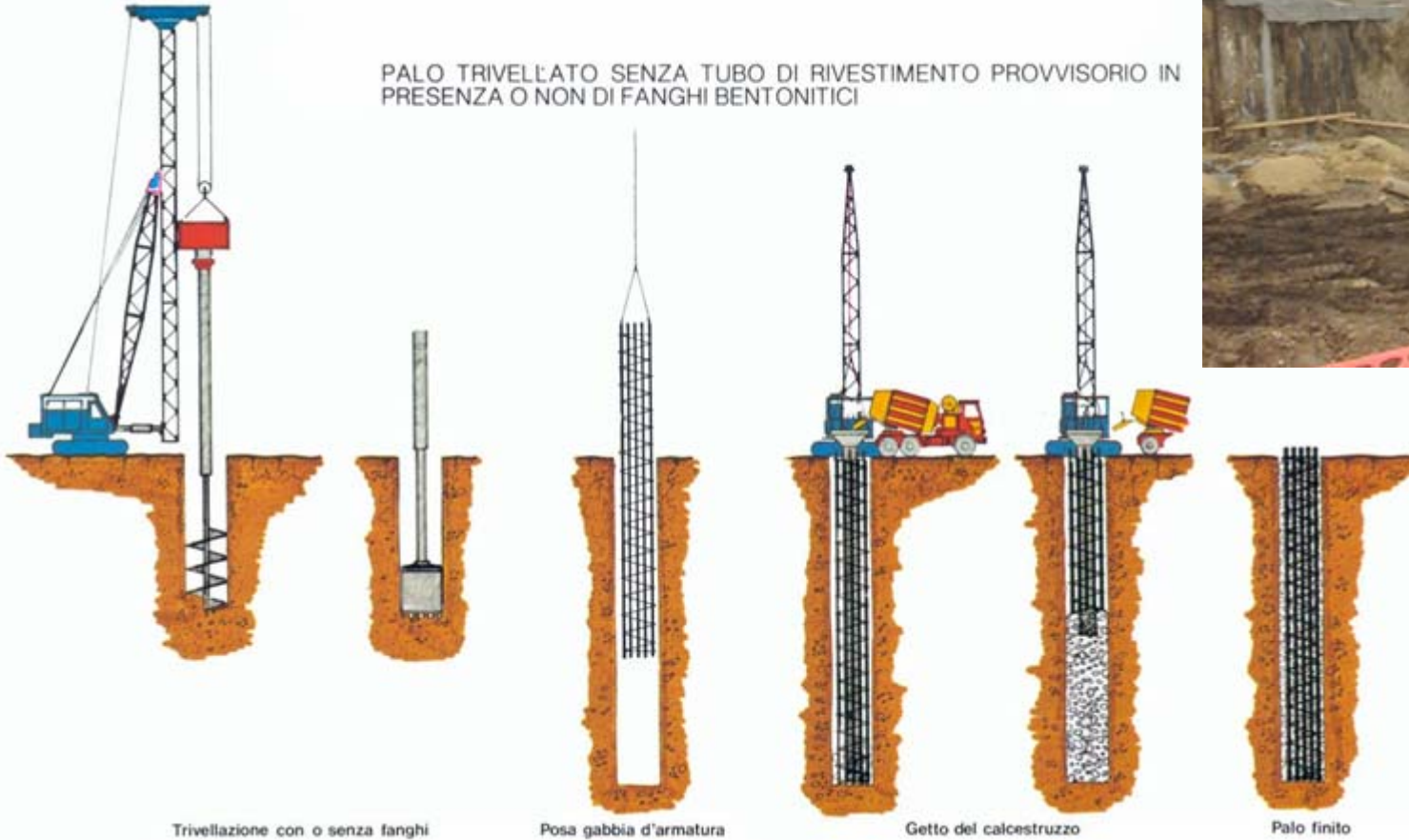




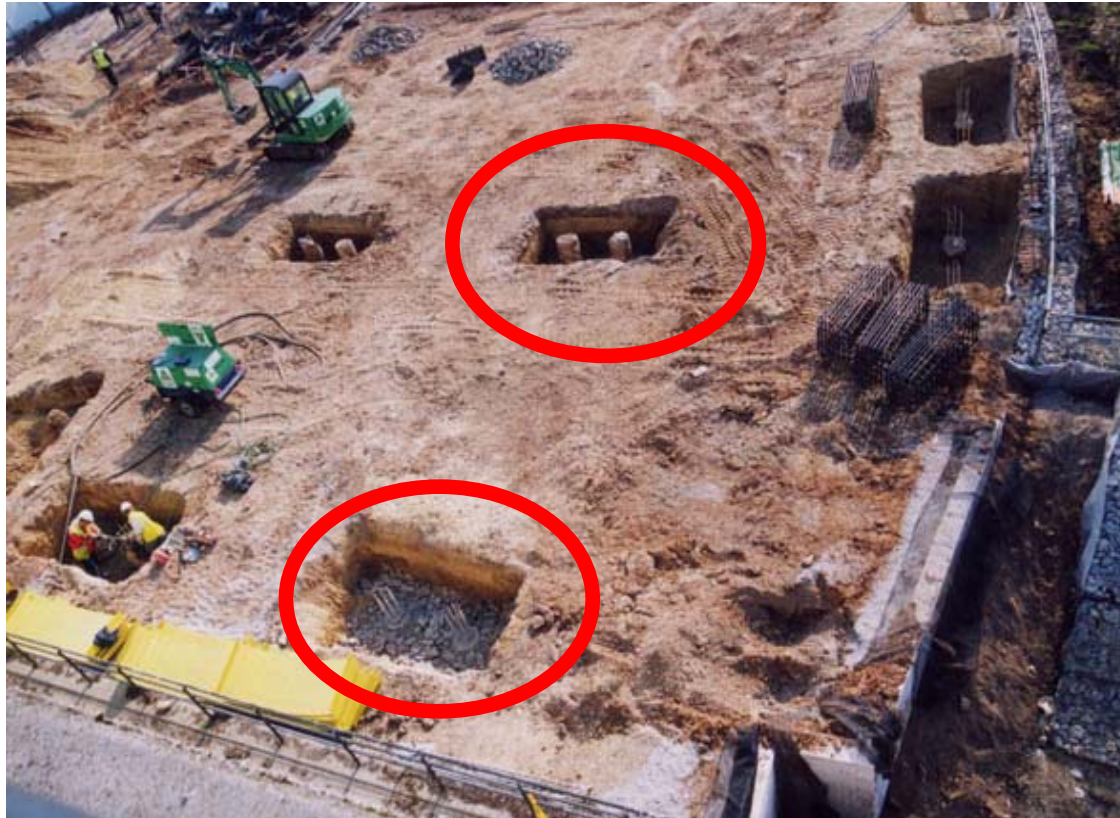
I PALI



PALO TRIVELLATO SENZA TUBO DI RIVESTIMENTO PROVVISORIO IN PRESENZA O NON DI FANGHI BENTONITICI







**Sulle teste dei pali si armano e
gettano i plinti**





Realizzato il foro nel terreno si cala l'armatura del palo



**Si può
iniziare il
getto**



