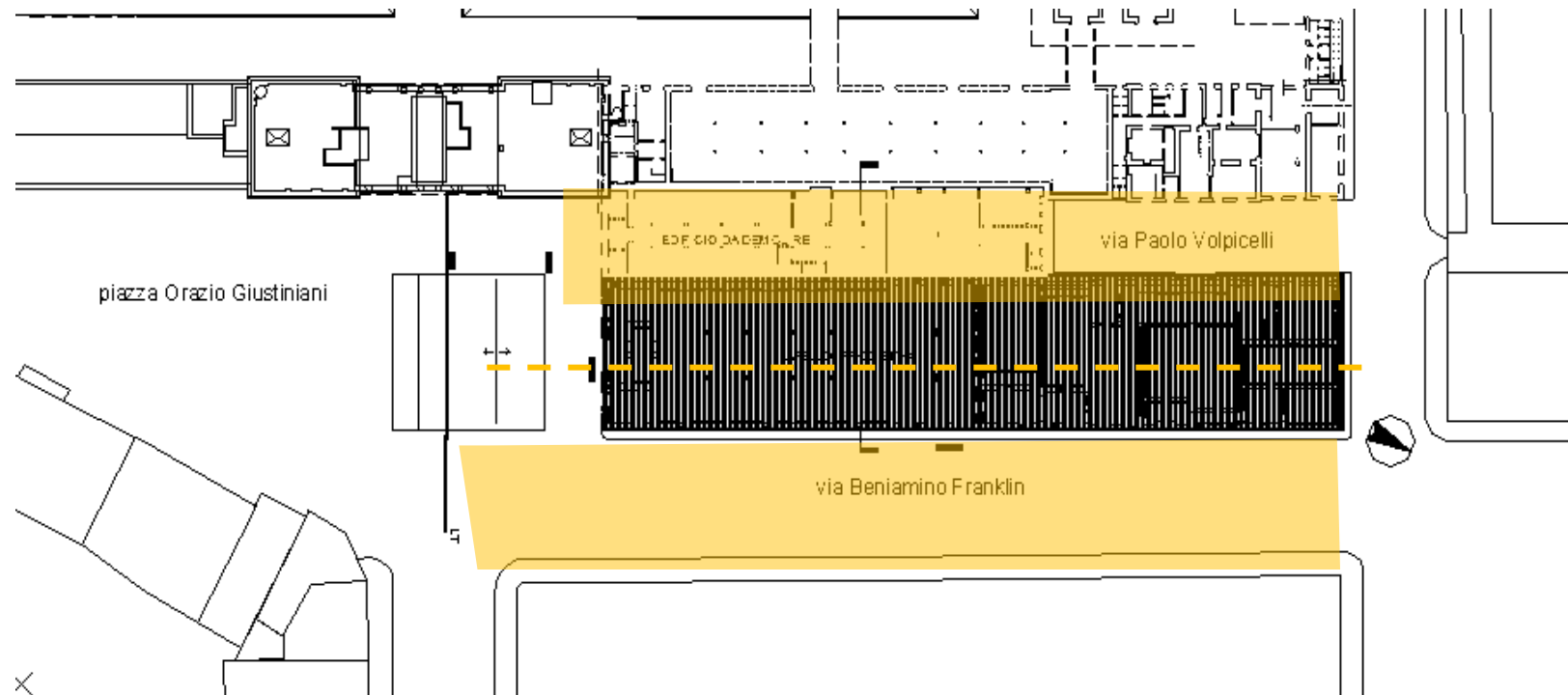


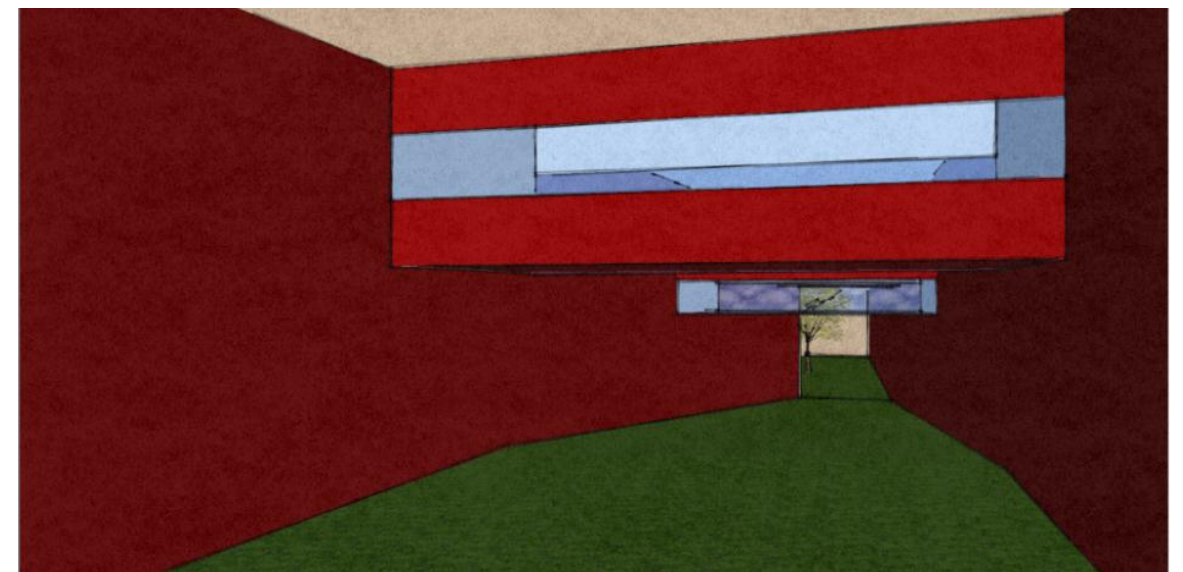
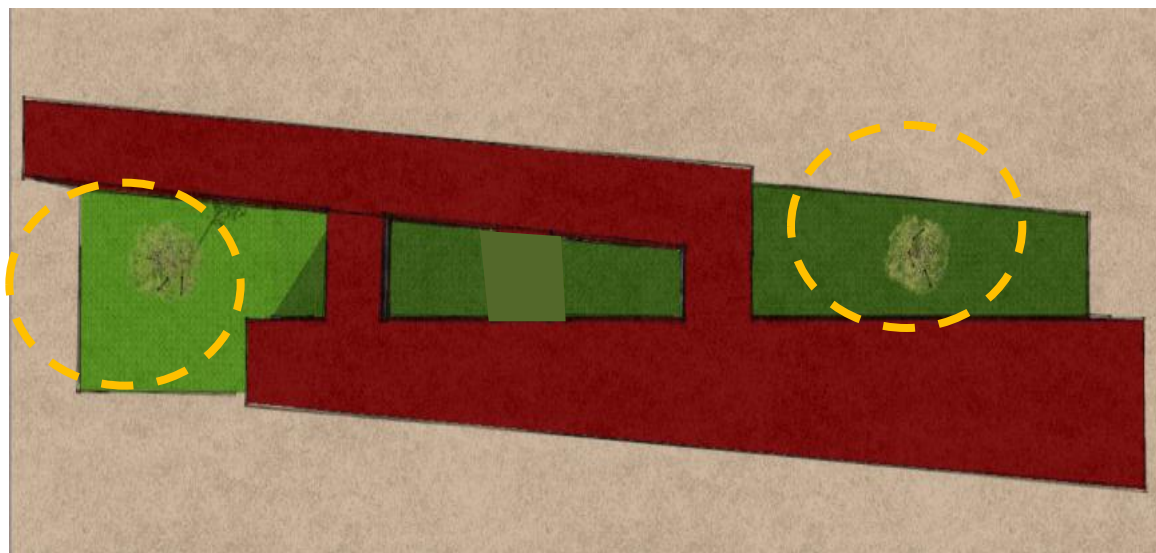
Prima Idea

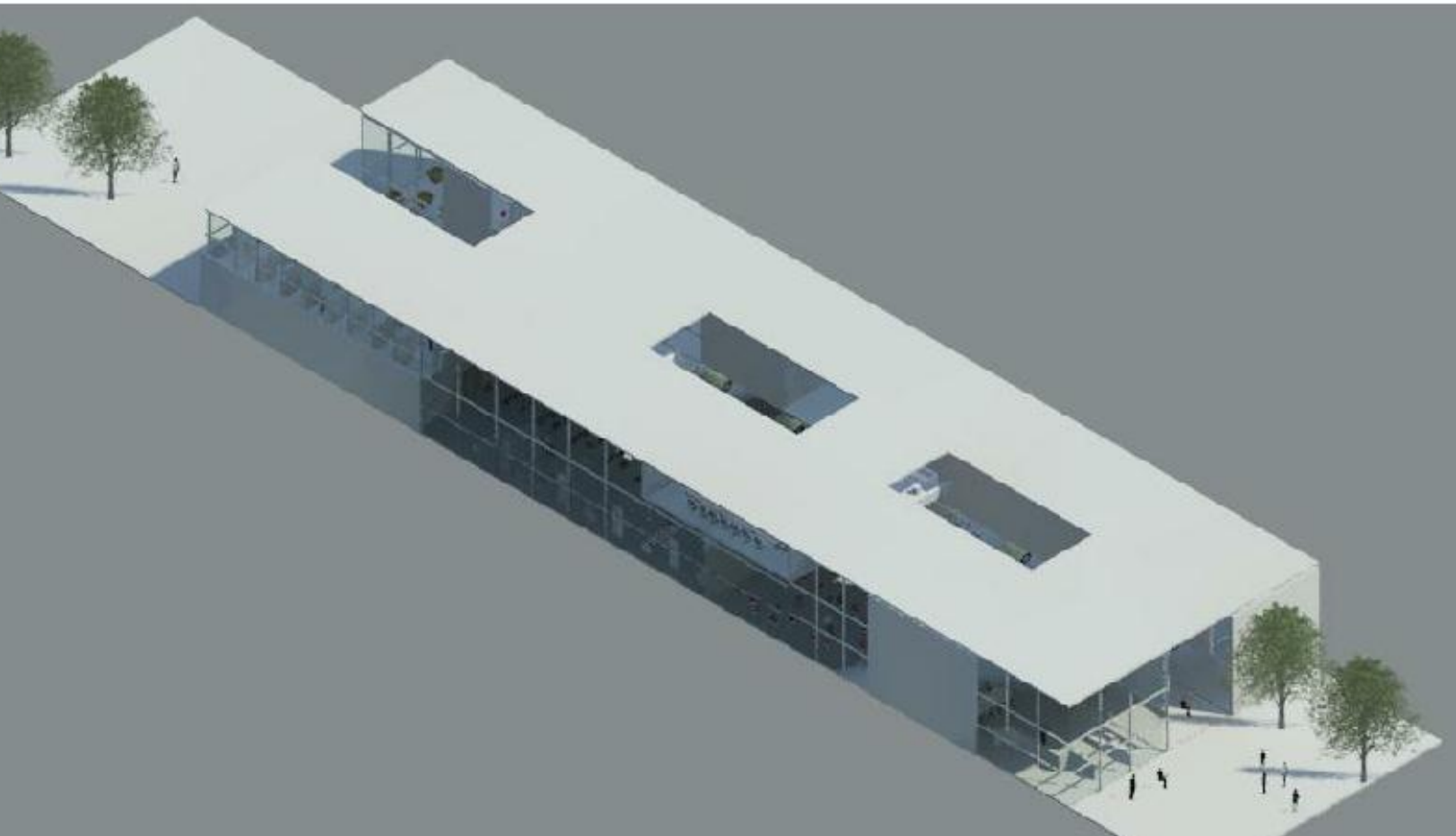
Il area di intervento si trova fra due via per la machina, poi si propone dare una via pedonale alla citt . E con questo si raggiunge generare una pi  forte relazione fra l'edificio ed il cittadino.

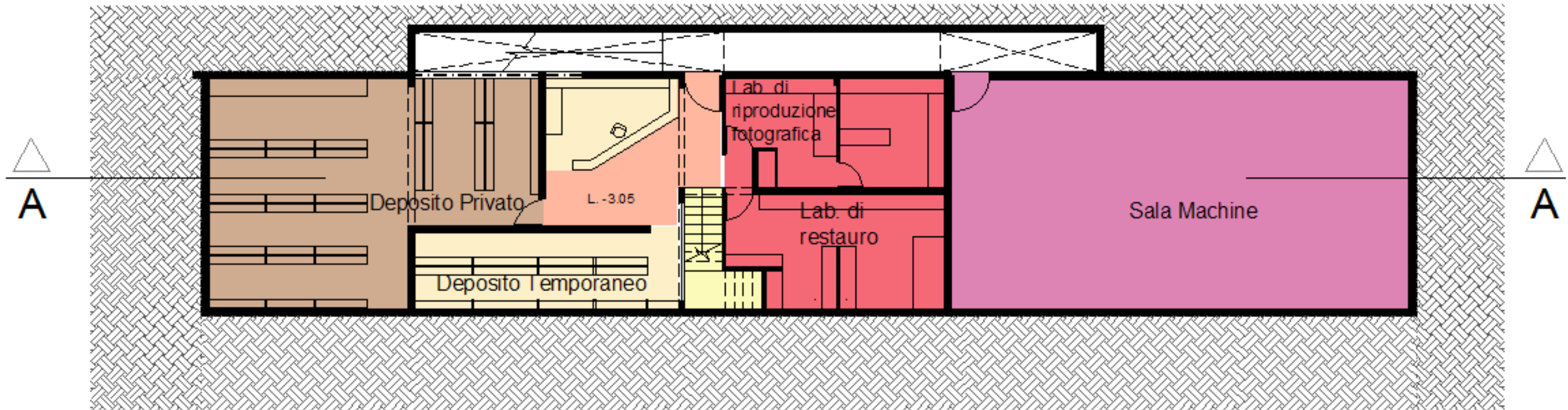


Si genera due spazi pubblici uno che si conetta con la piazza Oracio Giustiniani e altro con el Mattatoio.

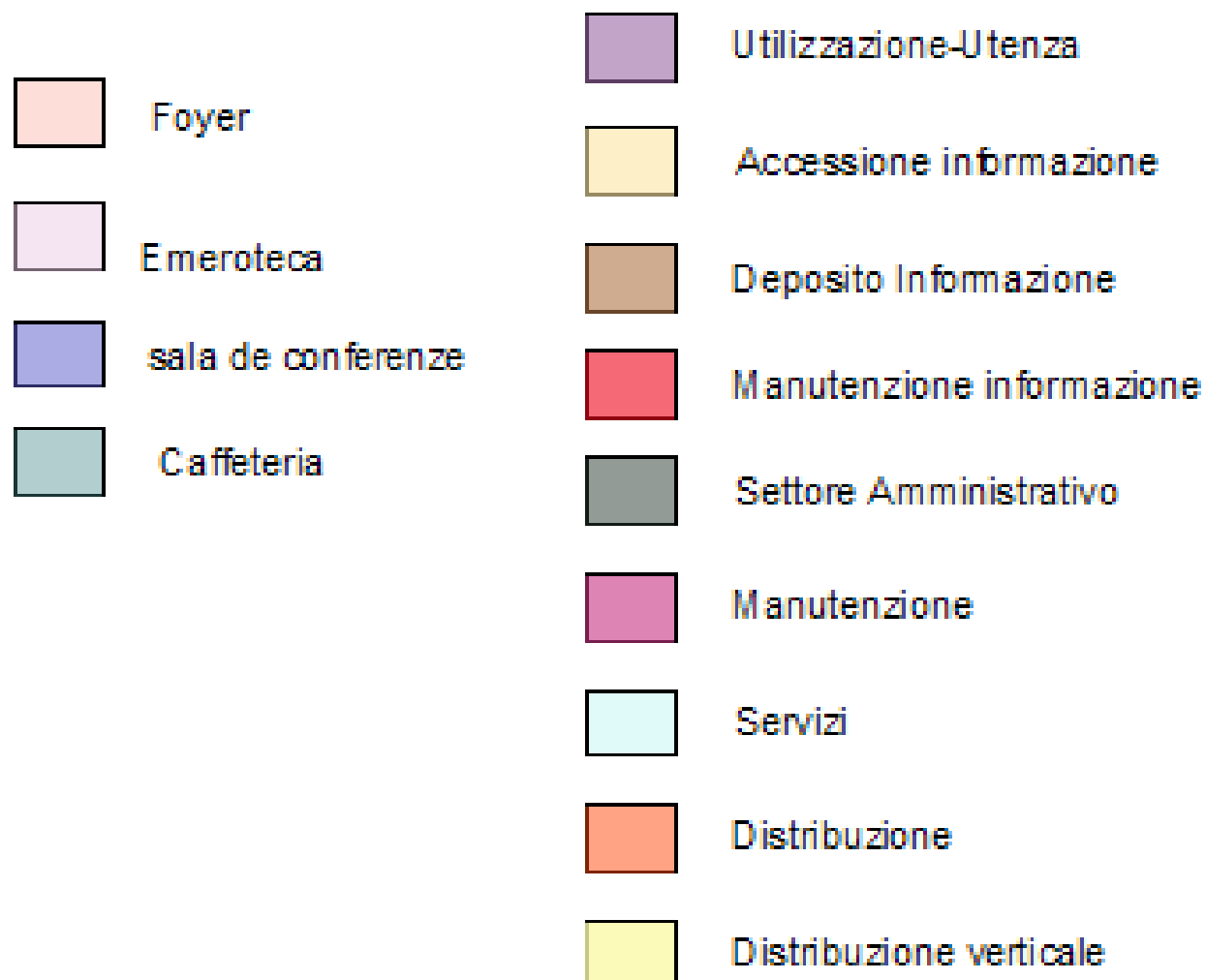
Questi volumini si conettano traverso la via pedonale

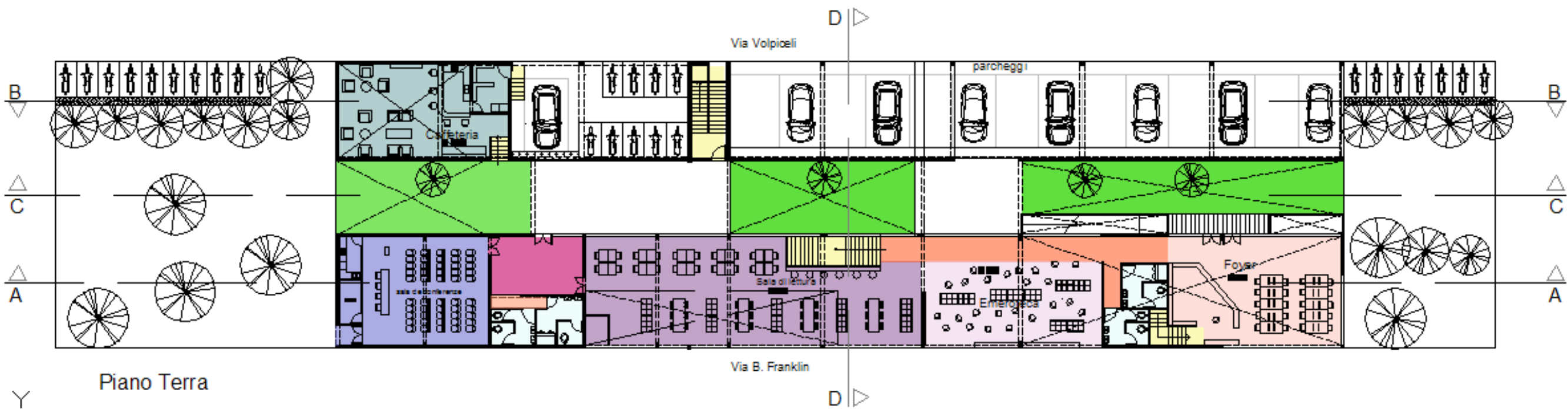


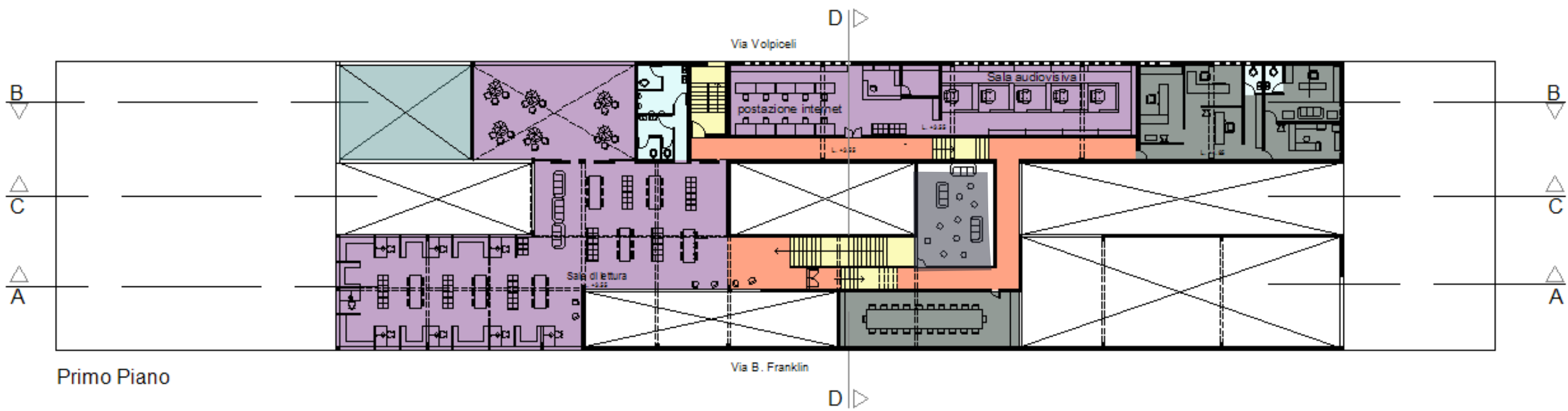


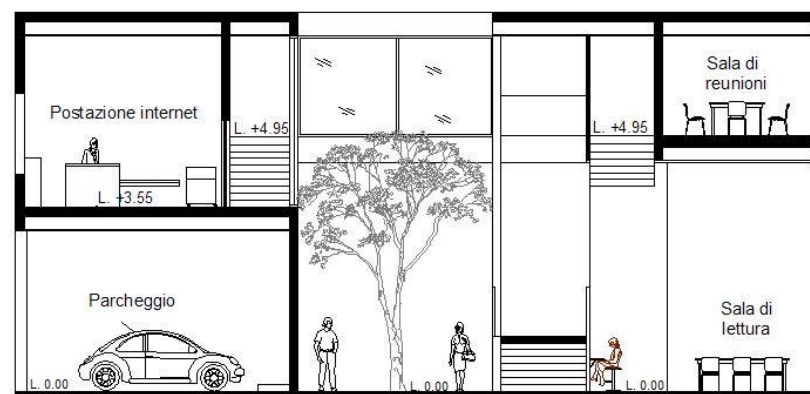
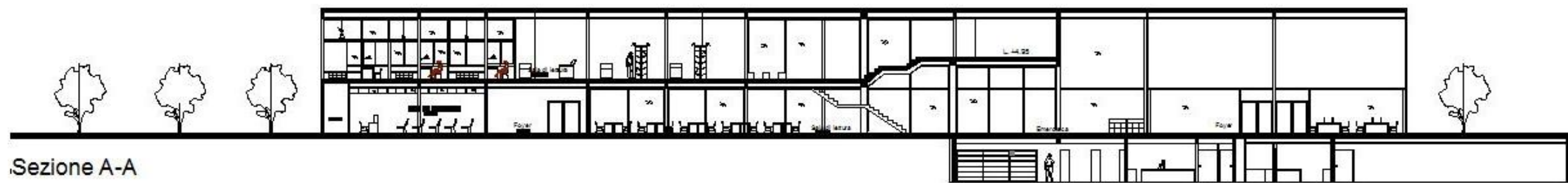


Piano Interrato



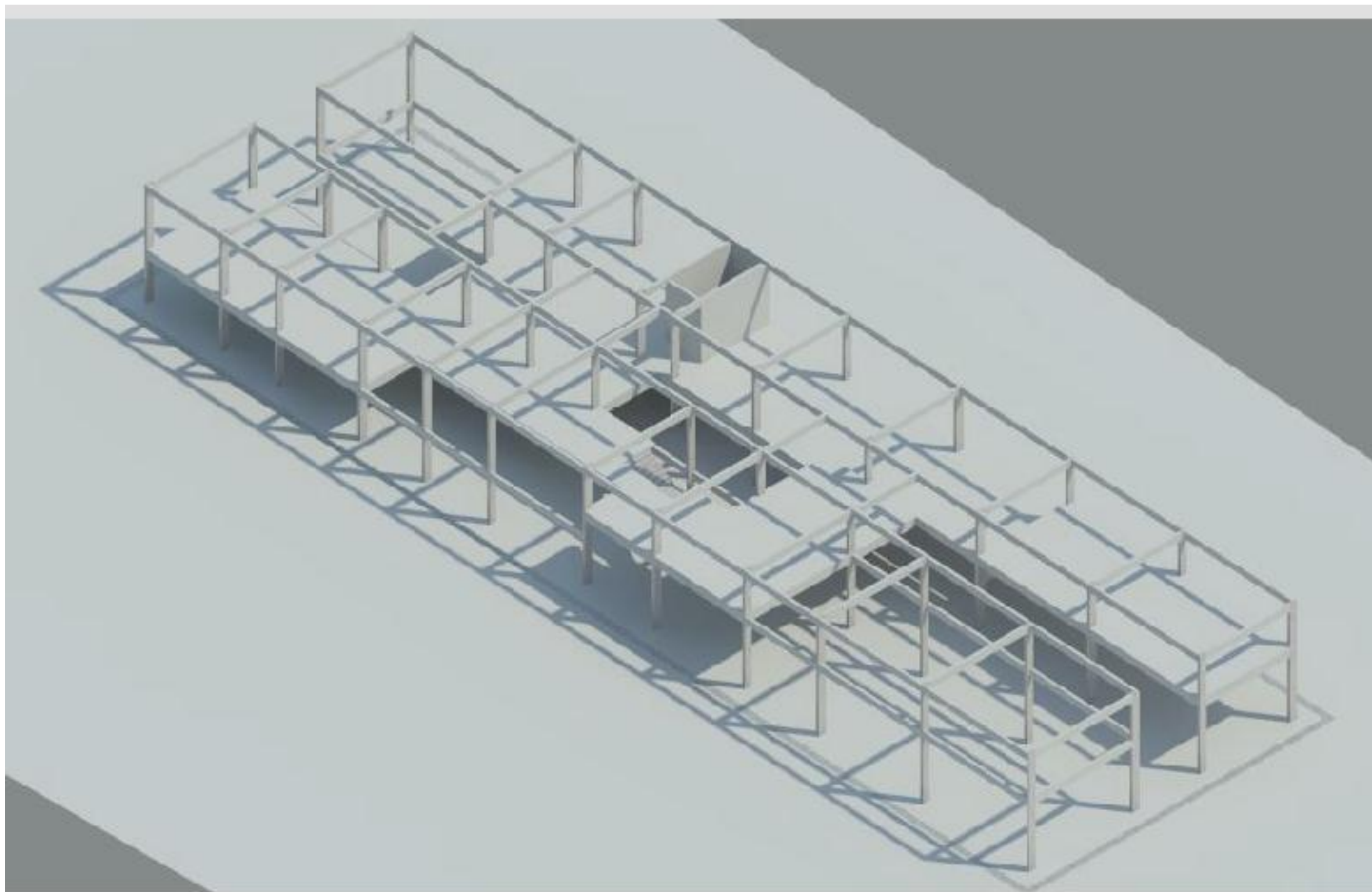






Sezione D-D

Viste della struttura

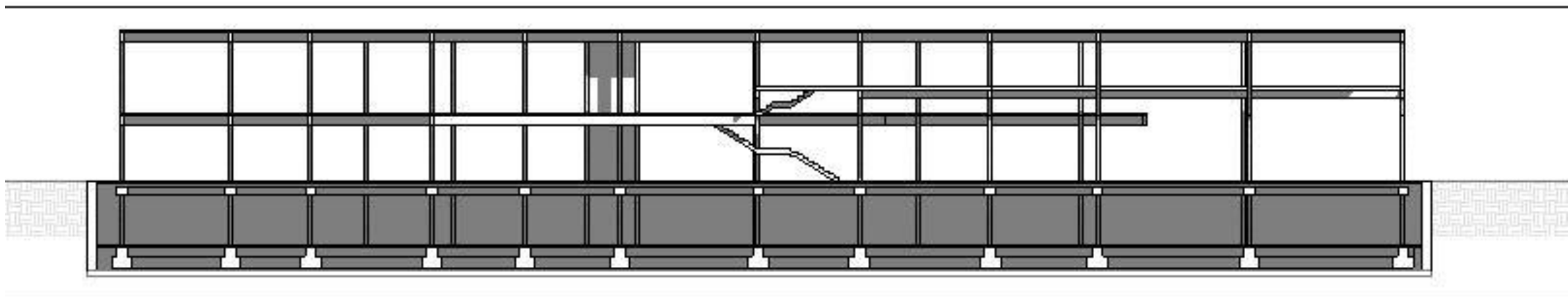












Sezione della struttura

Multi-Category Material Takeoff					
Family	Type	Material: Vol	Material: Cos	Mark	costo struttu
M_Concrete-Rectangular Beam	200x500	62.34 m ³		s1	7742.86
M_Concrete-Rectangular-Column	200x500	64.48 m ³	125.00€	s1	8060.00
Grand total: 205		126.82 m ³			15802.86

Multi-Category Material Takeoff 2					
Family	Type	Material: Cos	Mark	Material: Are	costo solai
Floor	Generic 1	60.00€	s2	5150.95 m ²	
Grand total: 8				5150.95 m ²	

Multi-Category Material Takeoff 3

Family	Type	quantita di ferro	Material: Volume	costo per armature
Basic Wall				
Basic Wall	.5			106884.68€
Basic Wall	Generic - 200			5437.48€
Floor				
Floor	Generic 150m			177707.66€
M_Concrete-Rectangular Beam				
M_Concrete-	60x50			20593.65€
M_Concrete-	100x60			45625.80€
M_Concrete-	200x500			14337.08€
M_Concrete-Rectangular-Column				
M_Concrete-	200x500			14830.40€
Stair				
Stair	Monolithic Stai			1218.45€
Grand total: 239				386635.20€