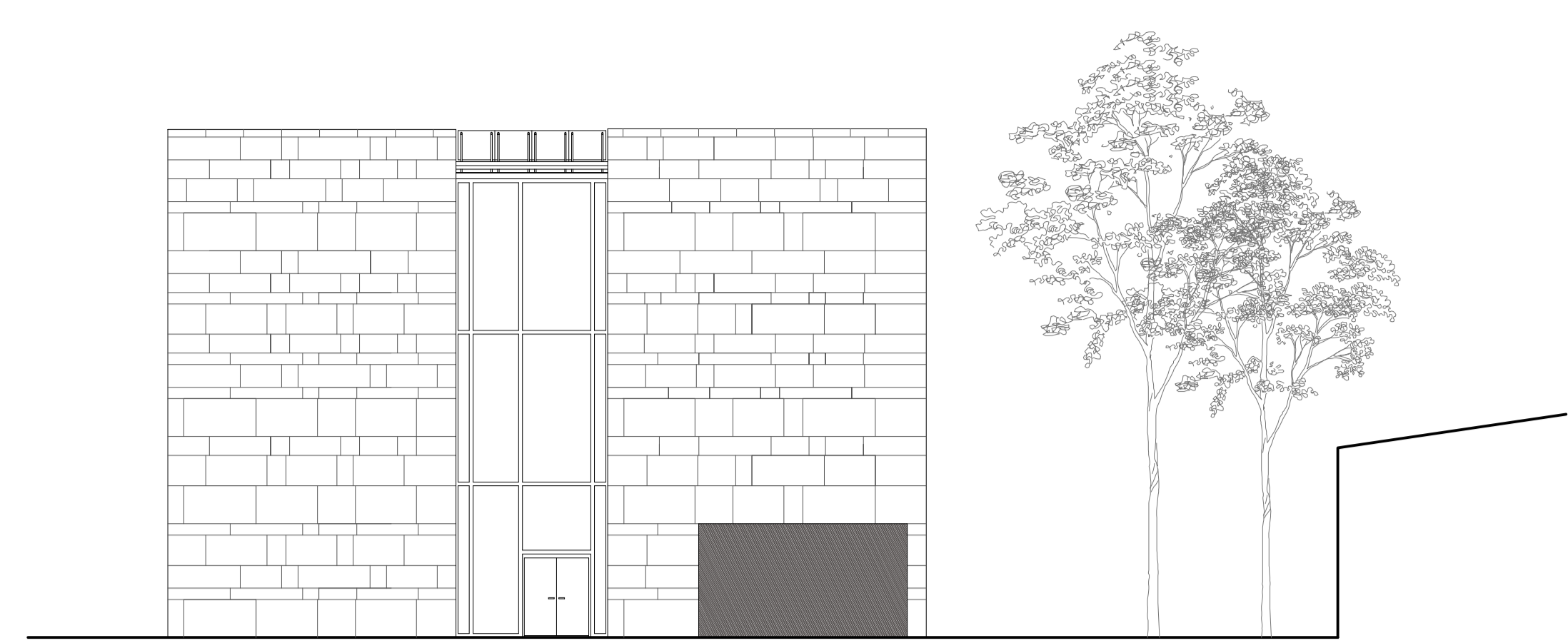


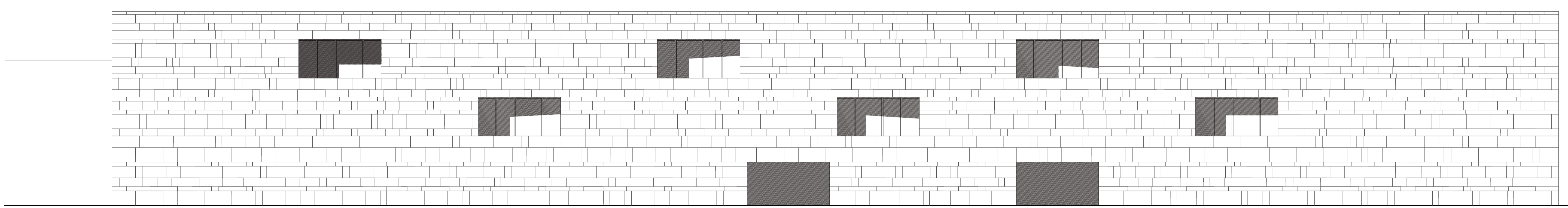
Prospetto lungo Piazza Giustiniani 1:200



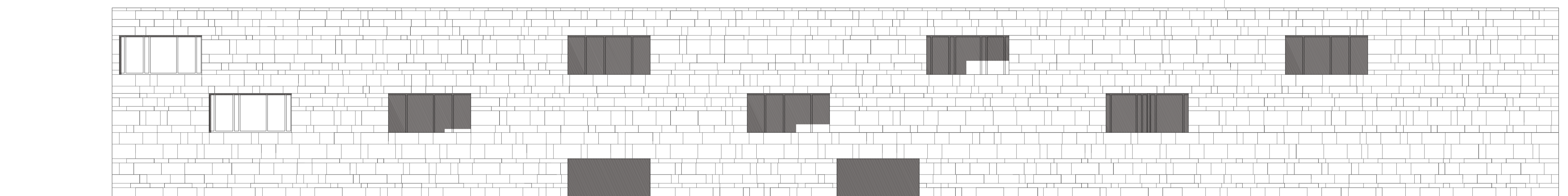
Prospetto lungo Via Manuzio 1:200

h= 0.20 m	l= 1 m				
h= 0.30 m	l= 0.50 m	l= 1.91 m	l= 1.34 m	l= 0.43 m	l= 1.62 m
h= 0.50 m	l= 0.50 m	l= 1.91 m	l= 1.34 m	l= 0.43 m	l= 1.62 m
h= 0.60 m	l= 0.50 m	l= 1.91 m	l= 1.34 m	l= 0.43 m	l= 1.62 m
h= 0.80 m	l= 0.50 m	l= 1.91 m	l= 1.34 m	l= 0.43 m	l= 1.62 m
h= 1 m	l= 0.50 m	l= 1.91 m	l= 1.34 m	l= 0.43 m	l= 1.62 m

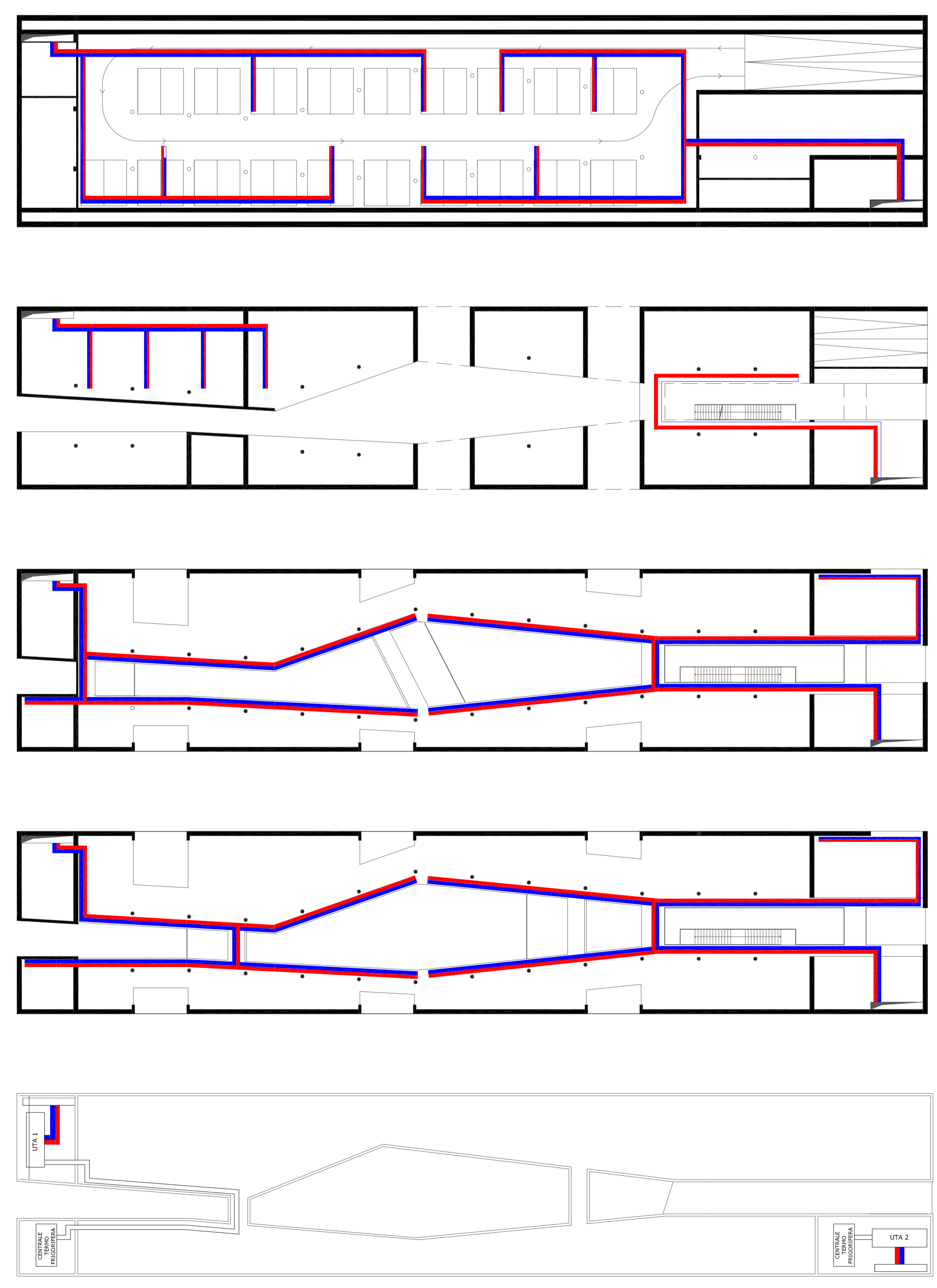
Lastre di rivestimento:
travertino romano, spessore 3 cm



Prospetto lungo Via Franklin 1:200



Prospetto lungo Via Volpicelli 1:200



Schema impianti



VISTA DA PIAZZA ORAZIO GIUSTINIANI



VISTA VERSO VIA FRANKLIN