

Fig. 15 - Ercolano - Tramezzo in opera a graticcio costruito tra il 62 ed il 79 nel Collegio degli Augustali.

Il riempimento è in *opus incertum* e il tutto era rivestito di intonaco.
Spessore totale, compreso il rivestimento, 18 cm; spessore degli elementi di legno cm 9 x 9.





Fachwerkensemble at Kirchplatz in the city of Hann. Münden, Germany.



Reconstruction en 2010 de la [maison à colombages](#) dite le [Pain de Sucre renversé de Hildesheim](#)
[Hildesheim](#), Allemagne, 1510.

Casa baraccata



Fig. 4 Mileto (Vv), Palazzo Vescovile, Particolare dell'intelaiatura lignea.

Sistema Pombalino





Model of a Gothic building showing the truss system of the roof and the spire.

<http://www-personal.umich.edu/~jmeyerin/trusses.htm>



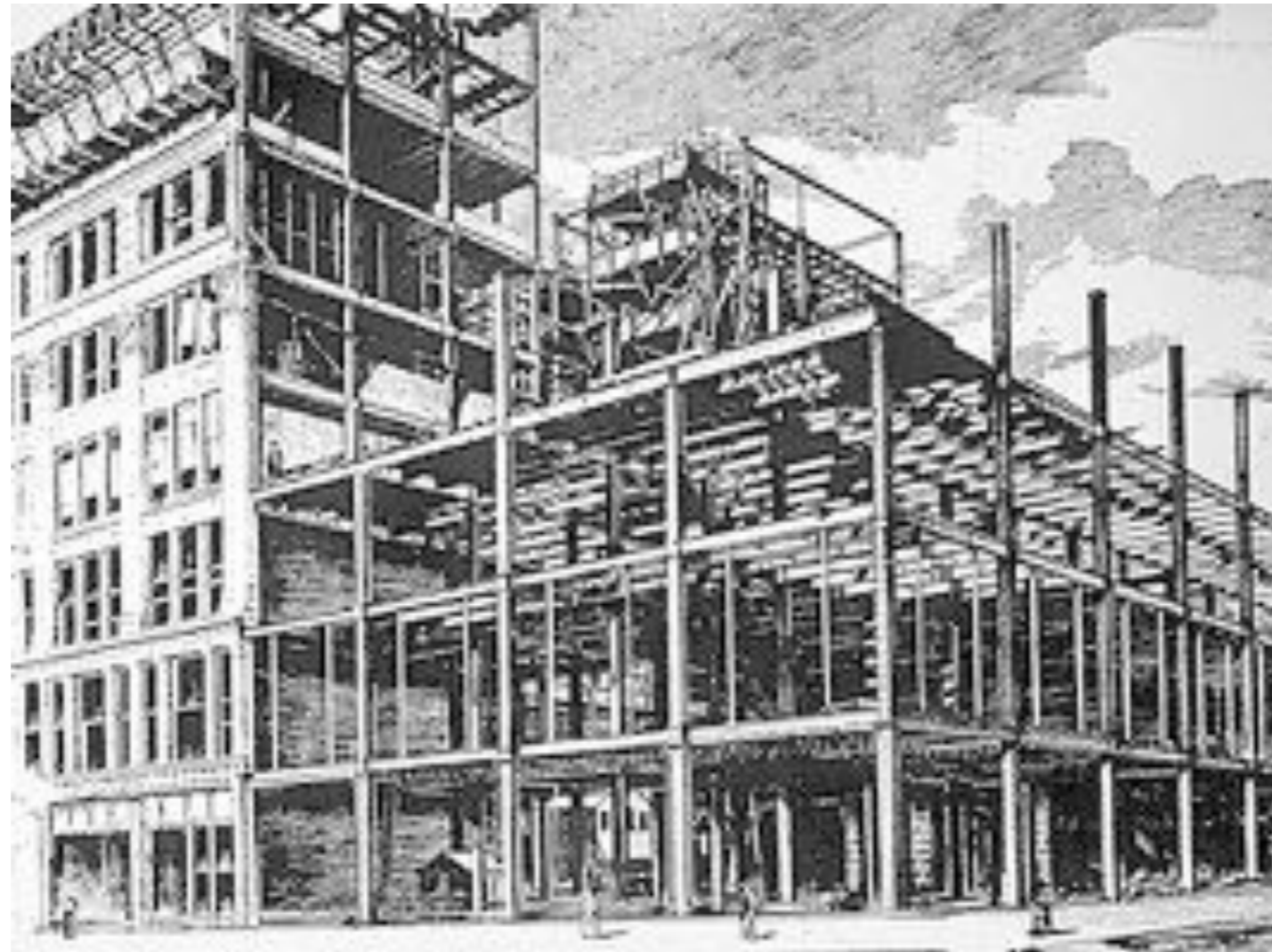








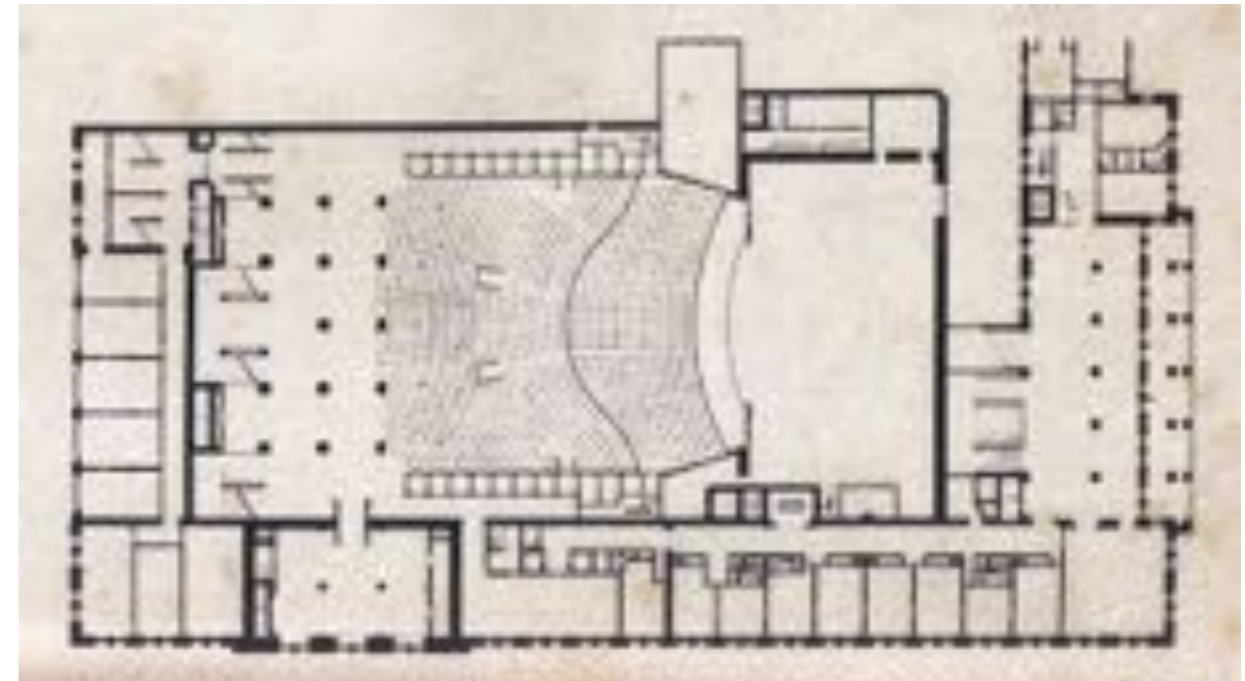
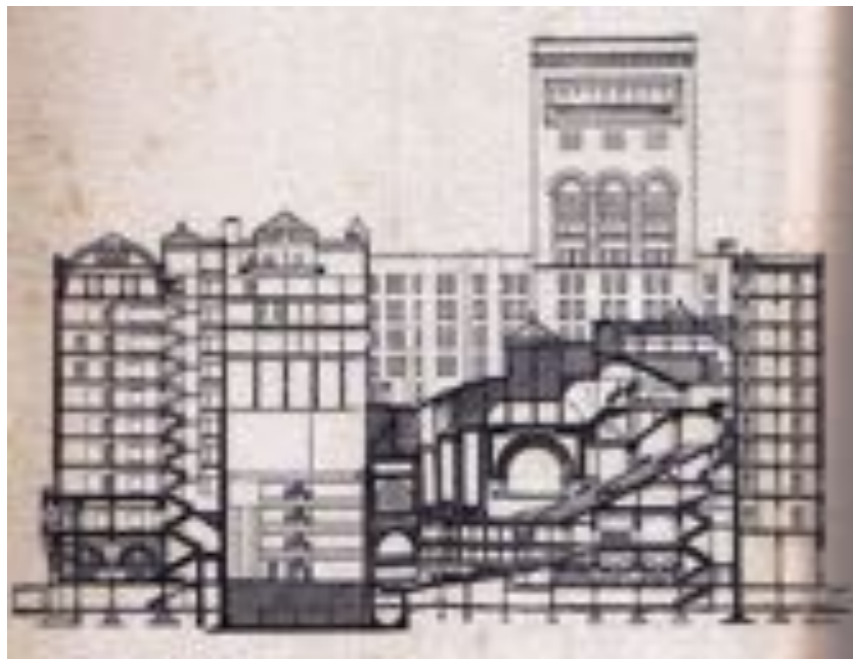
William Le Baron Jenney

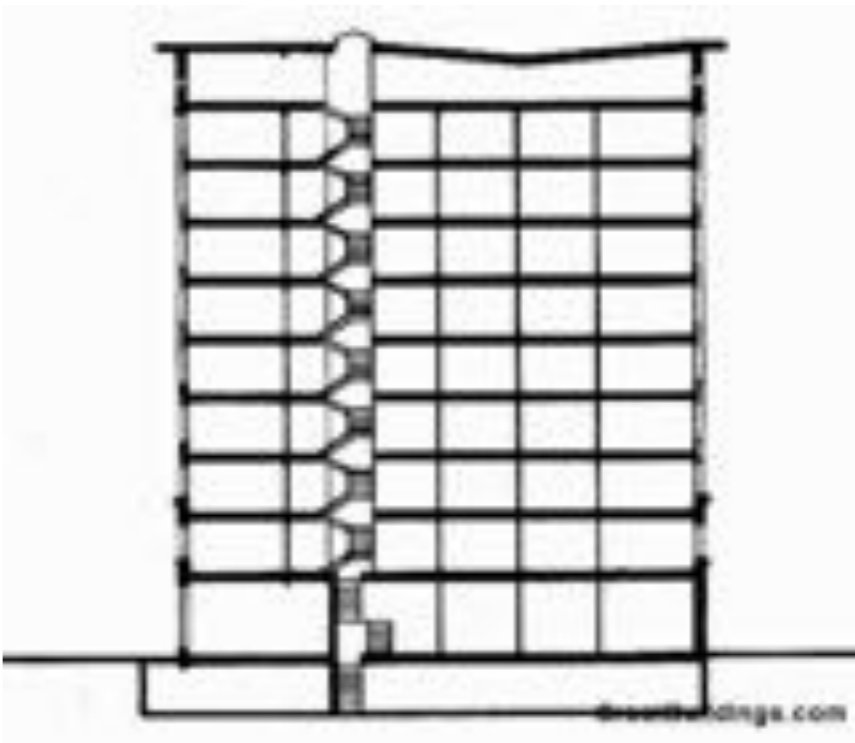


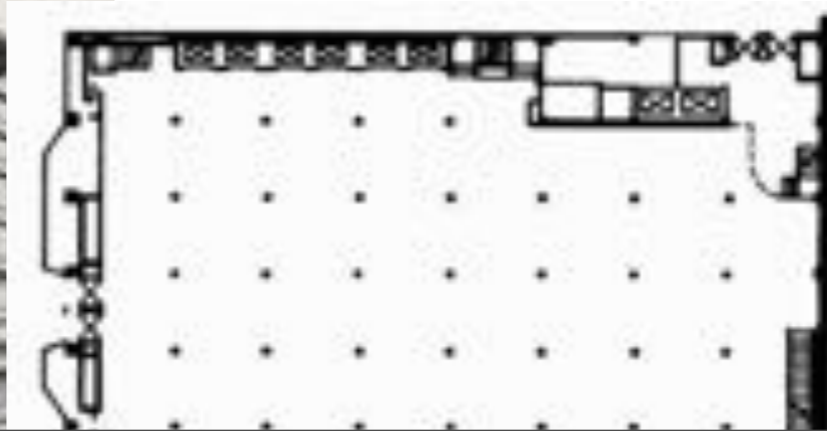
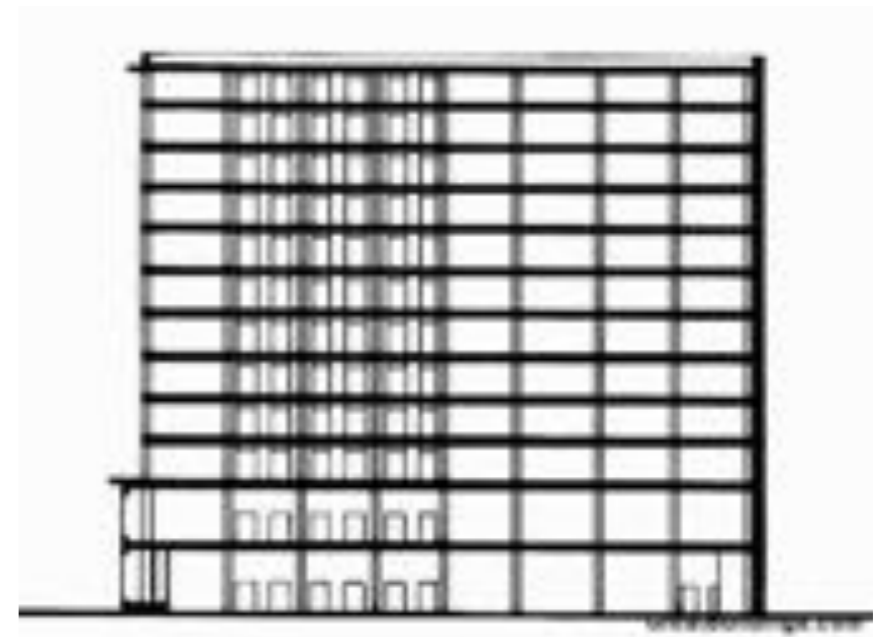
Fair Store (1891)



Auditorium building Luis Sullivan Chicago

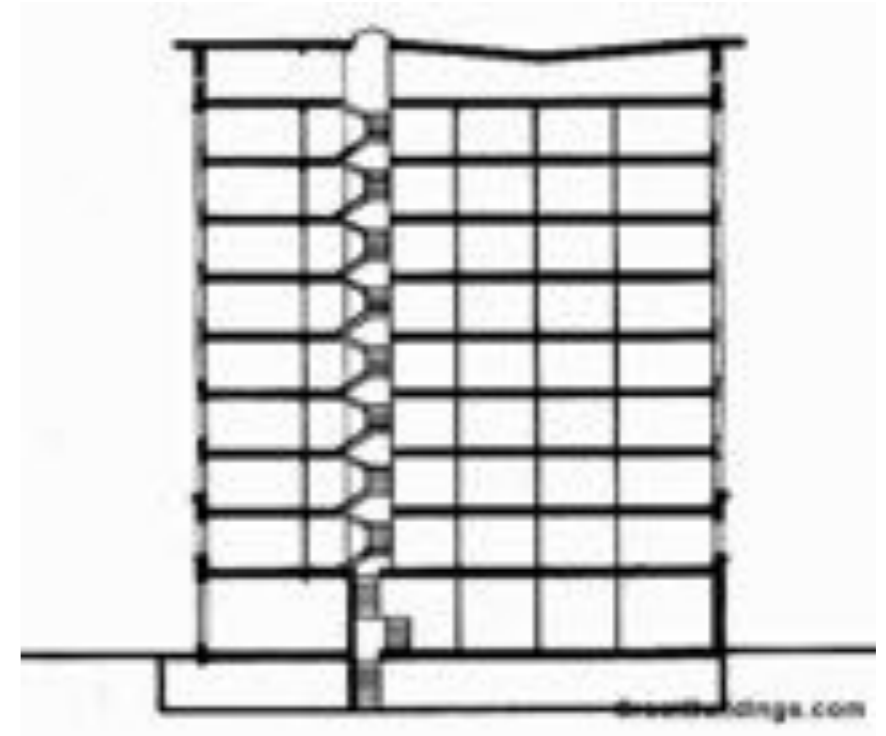
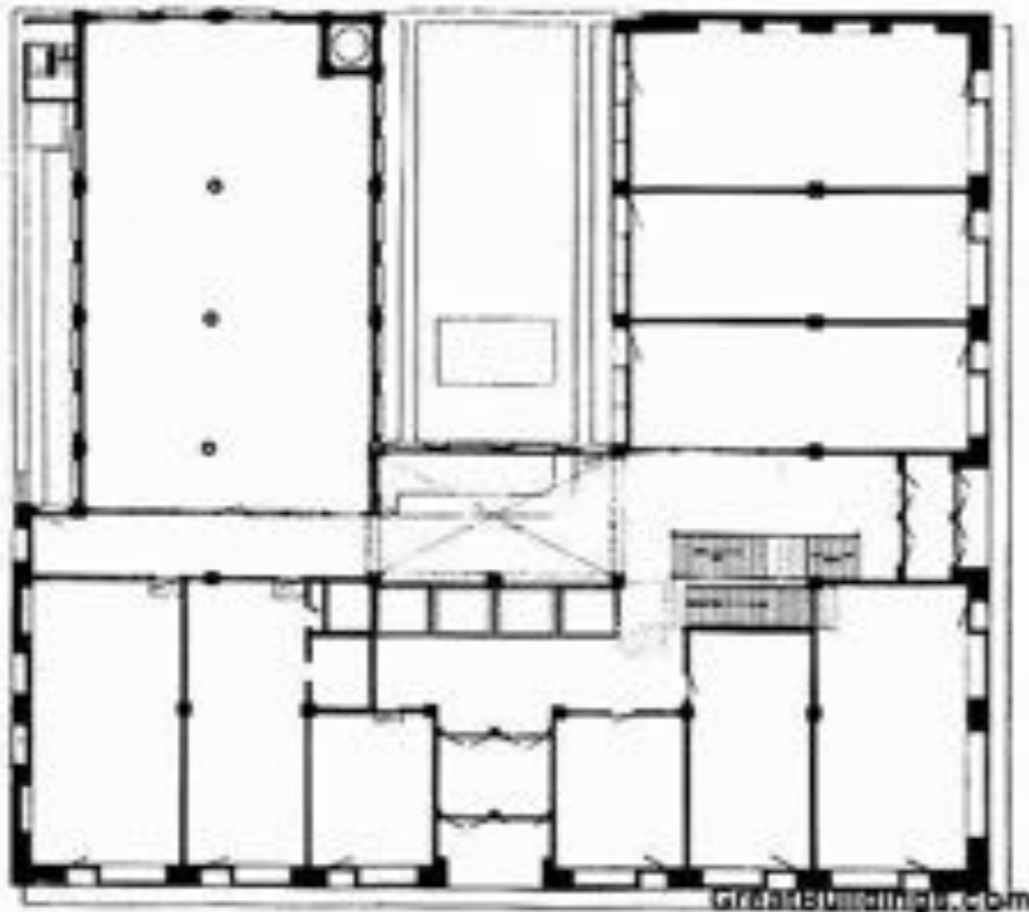






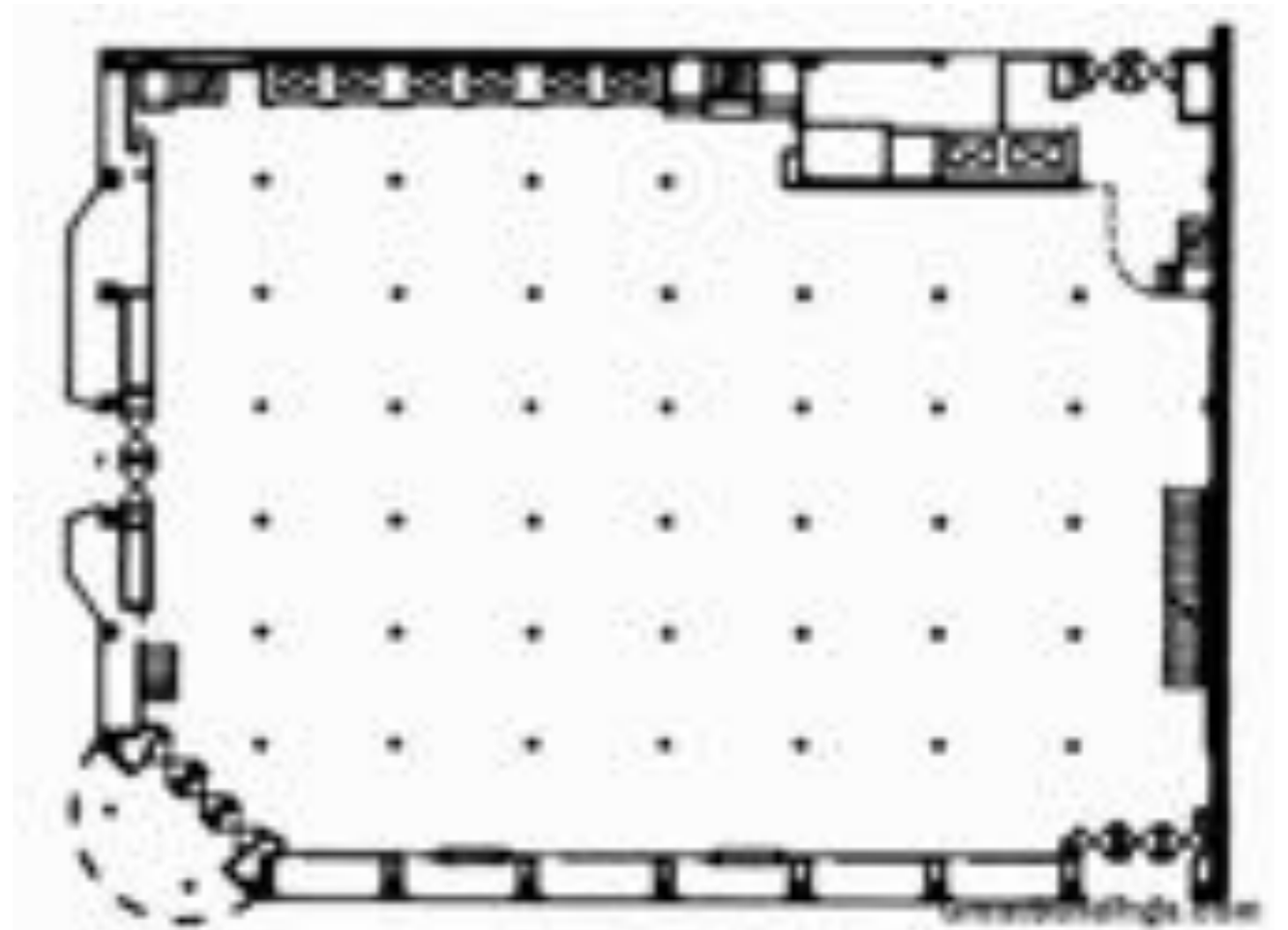
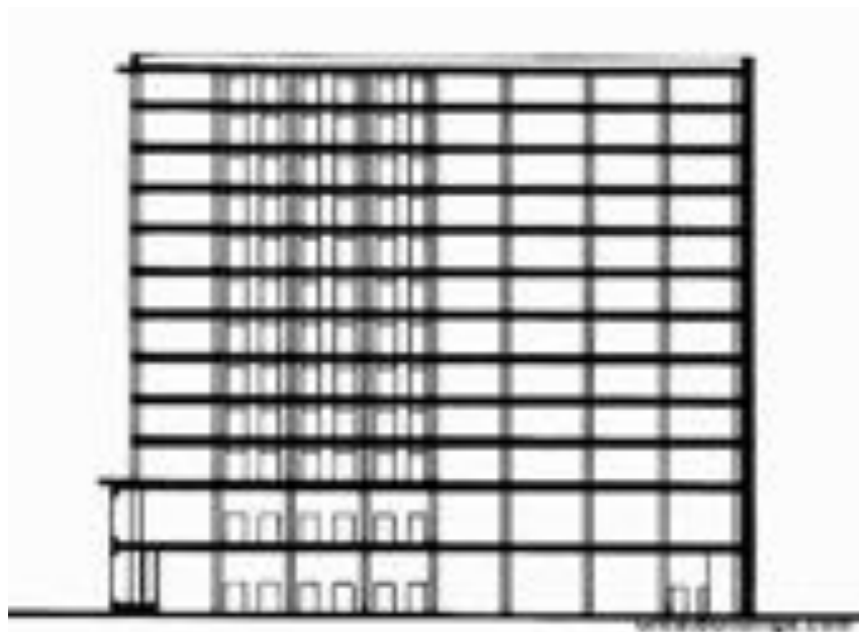


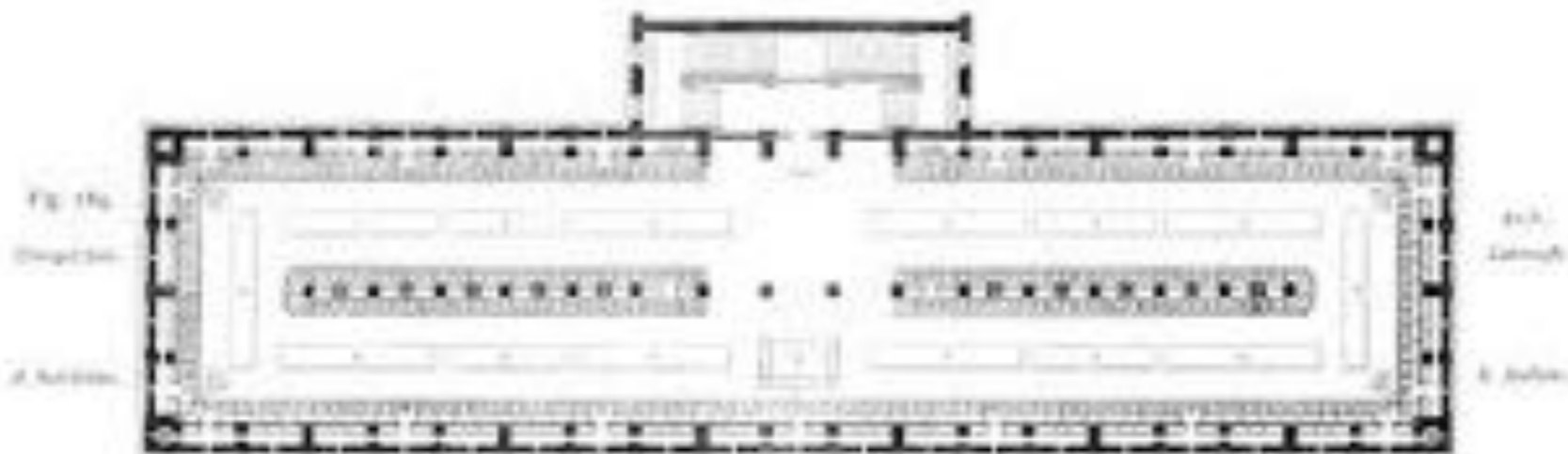
Wainwright building
Luis Sullivan
St Louis





Carson Pirie Scott store
Luis Sullivan
Chicago





Auguste Perret



Théâtre des Champs-Élysées (1911)