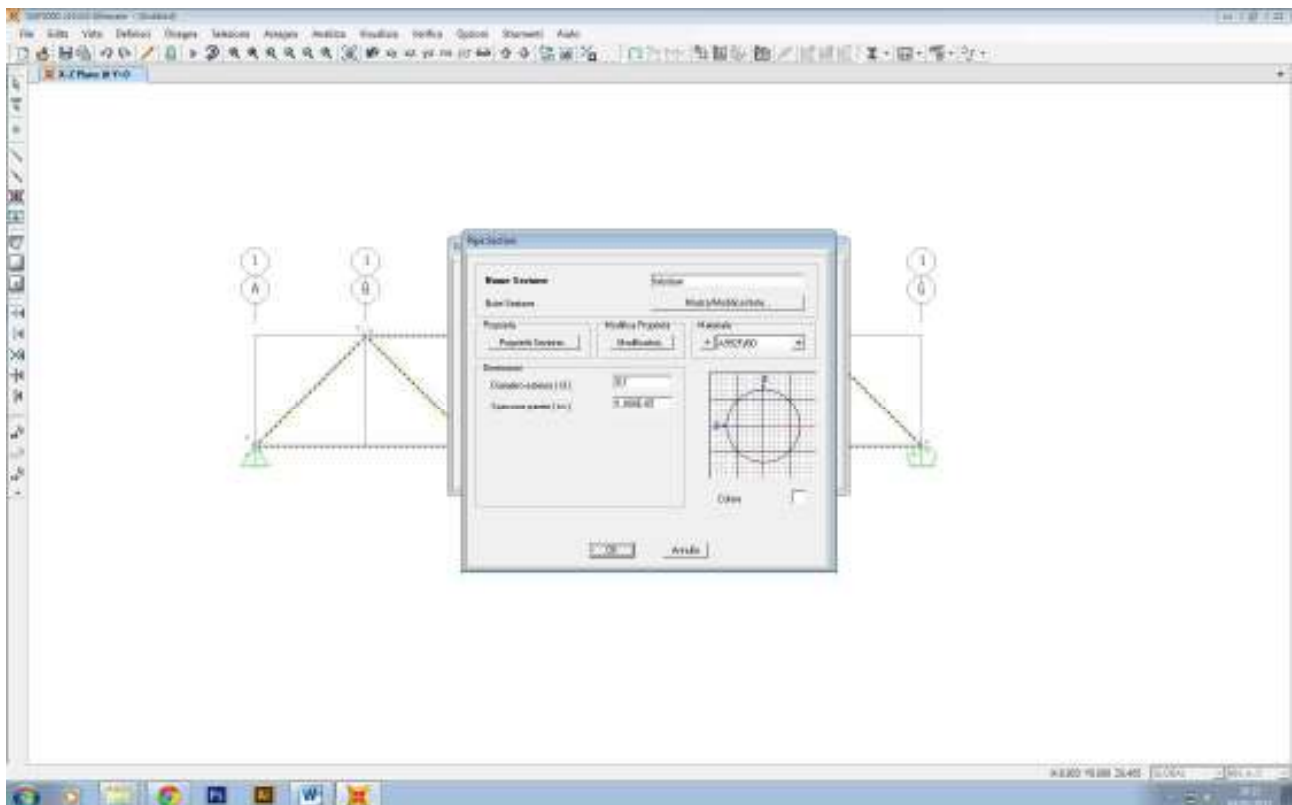
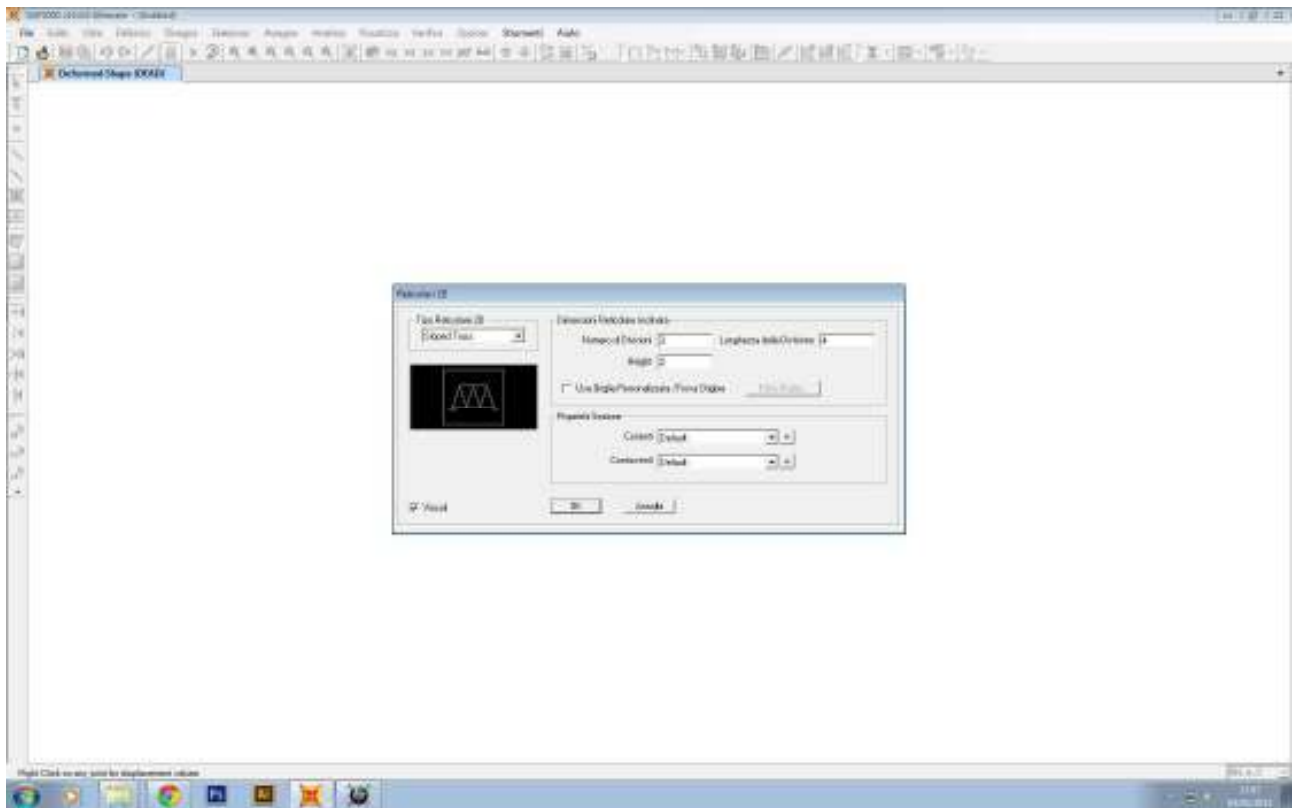
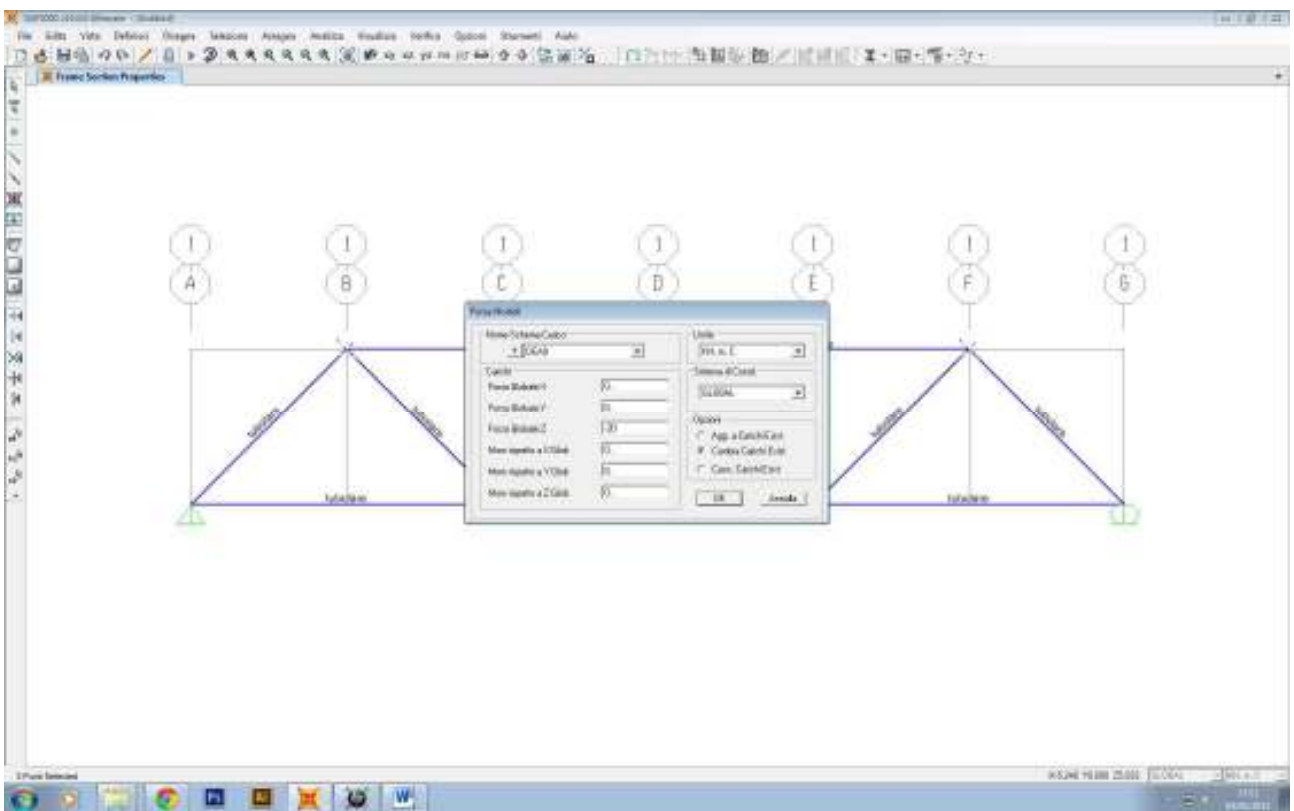
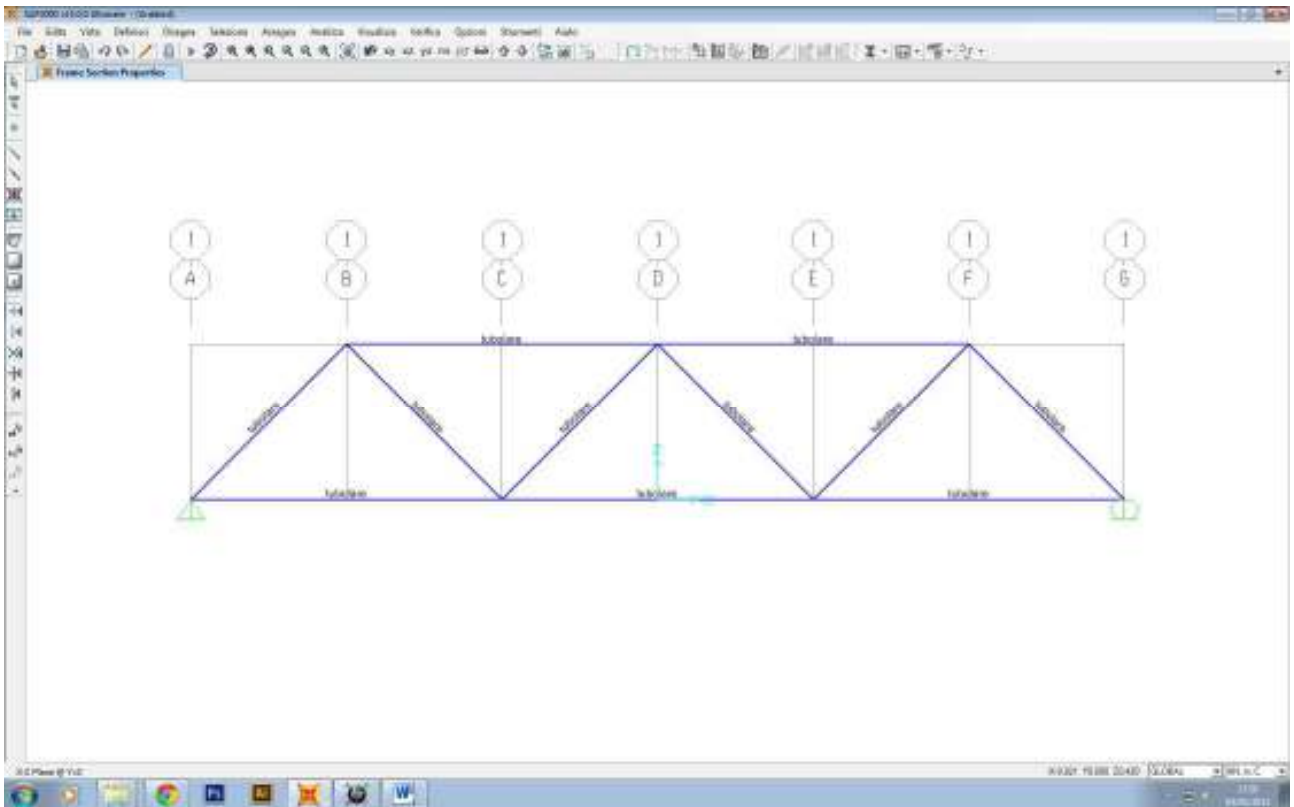
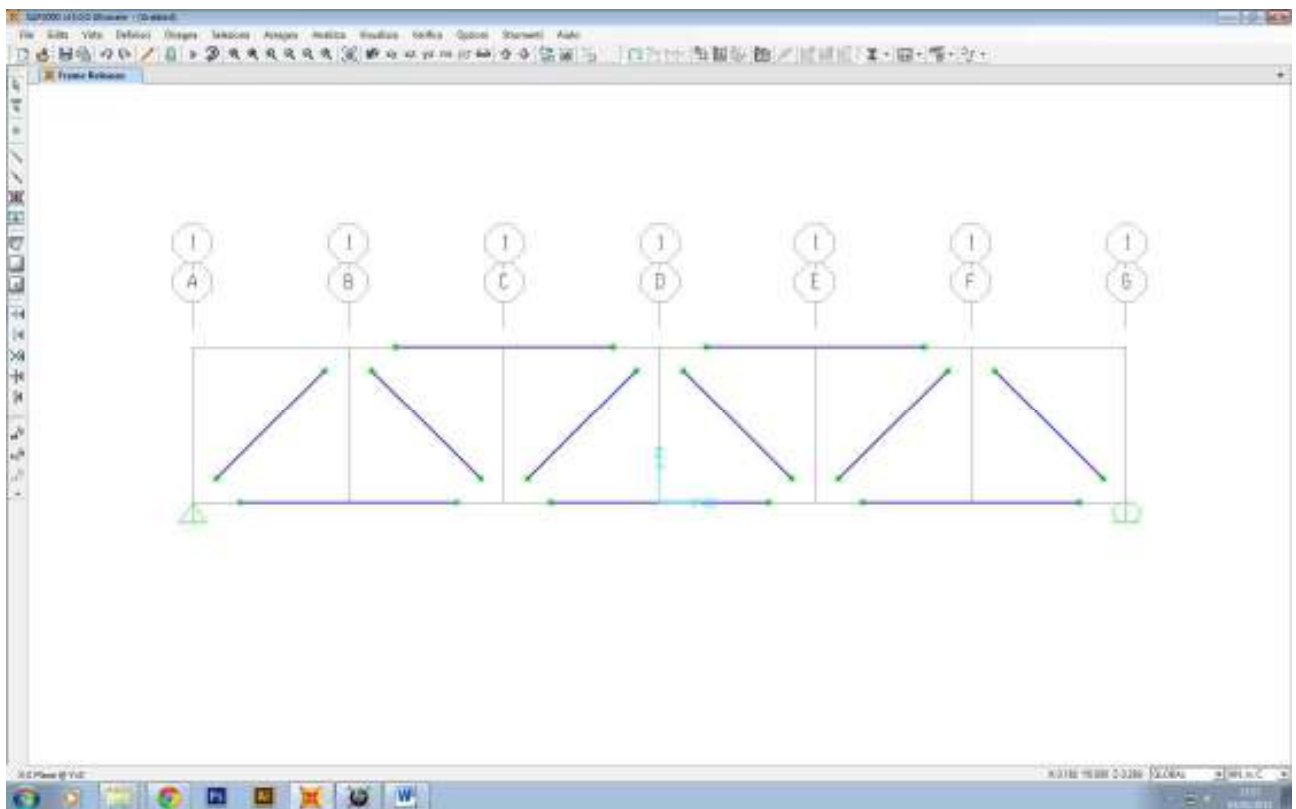
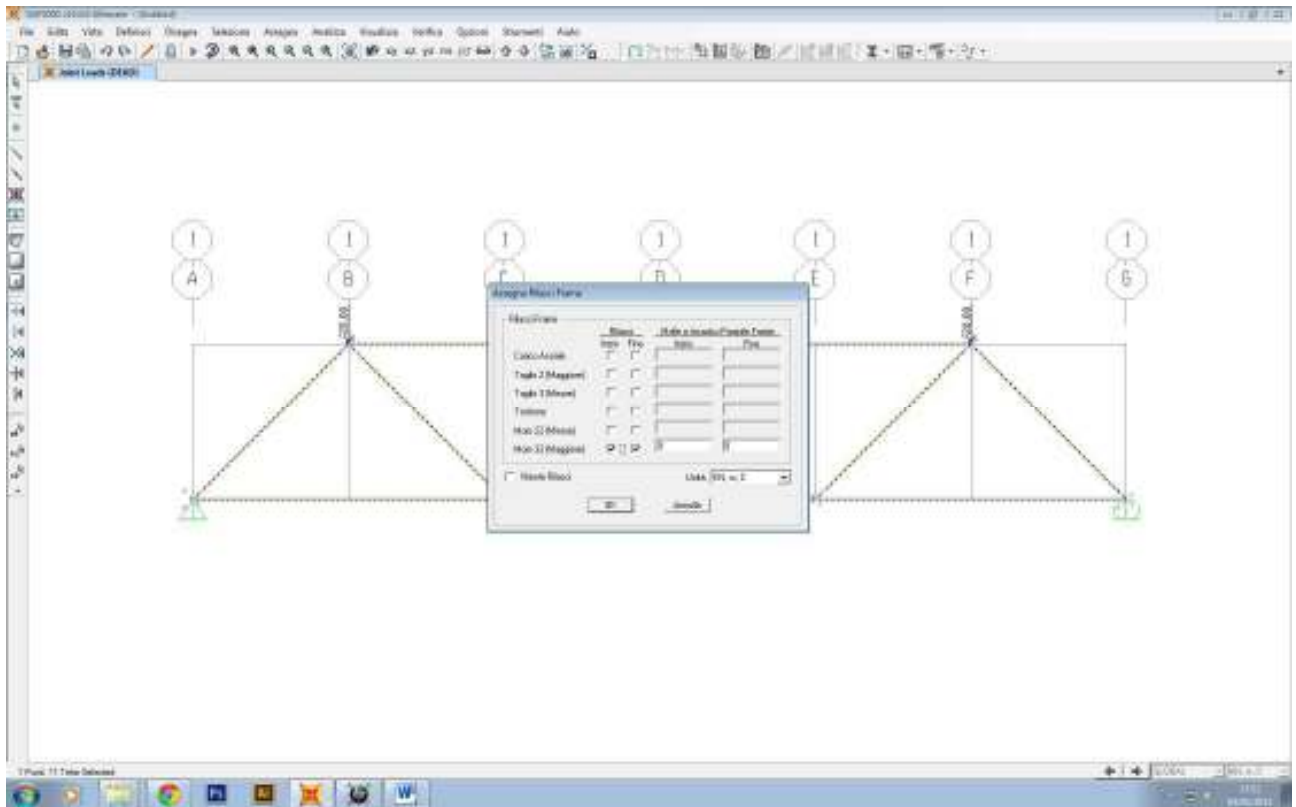


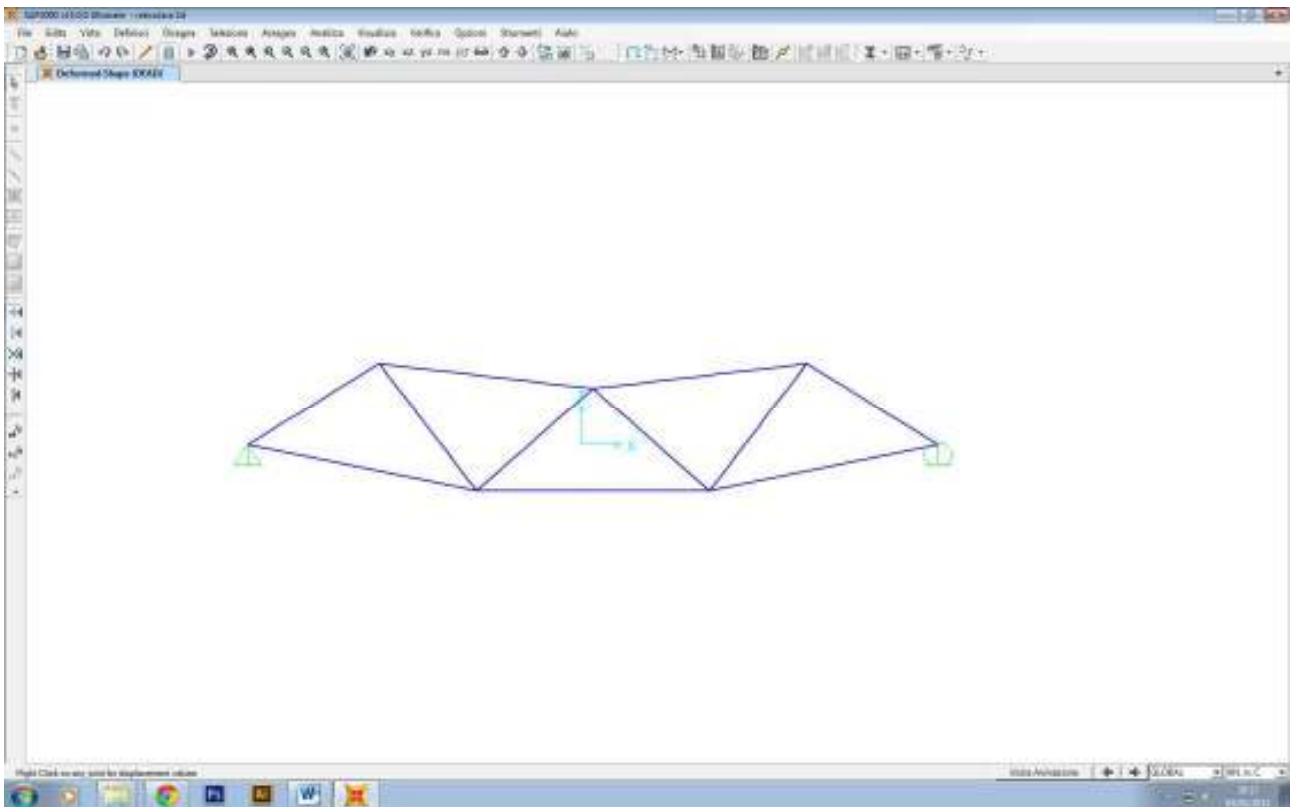
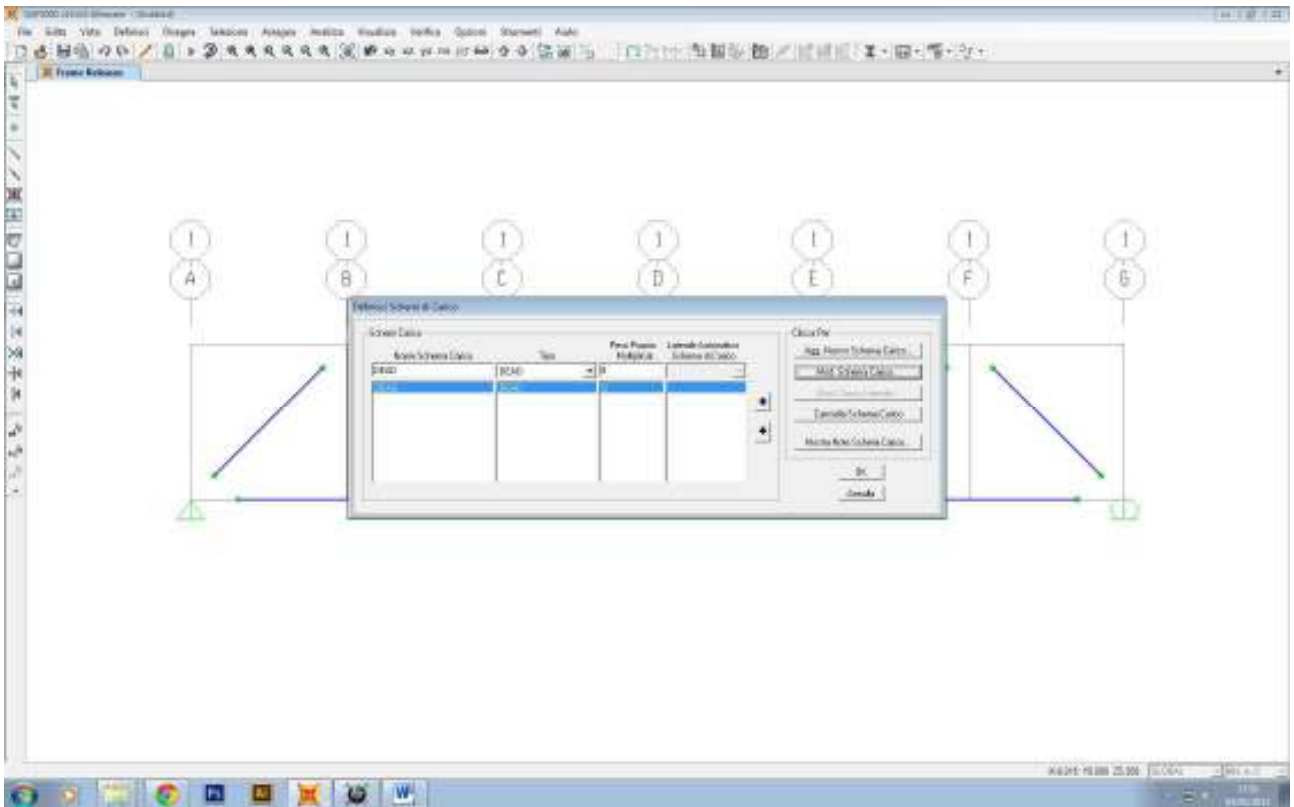
# TRAVE RETICOLARE SU SAP

Procedura per ottenere una trave reticolare

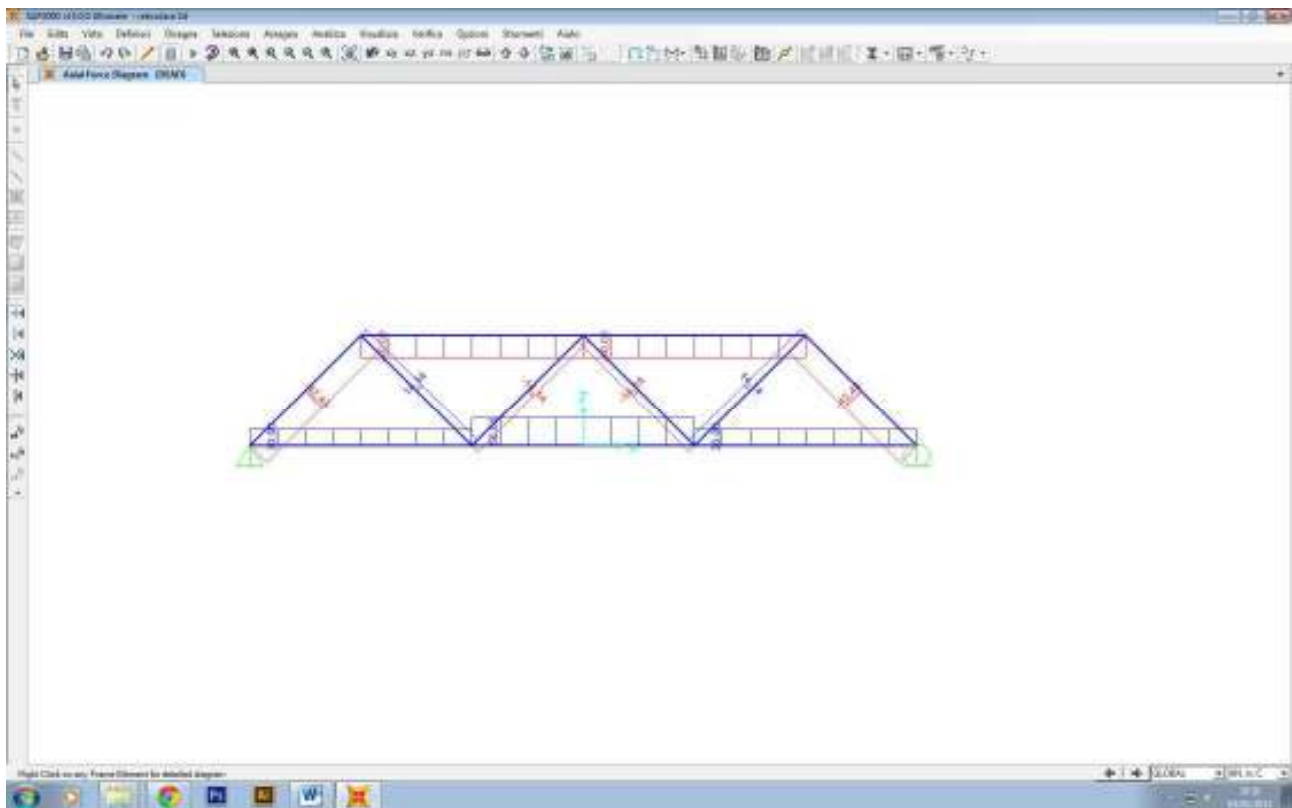




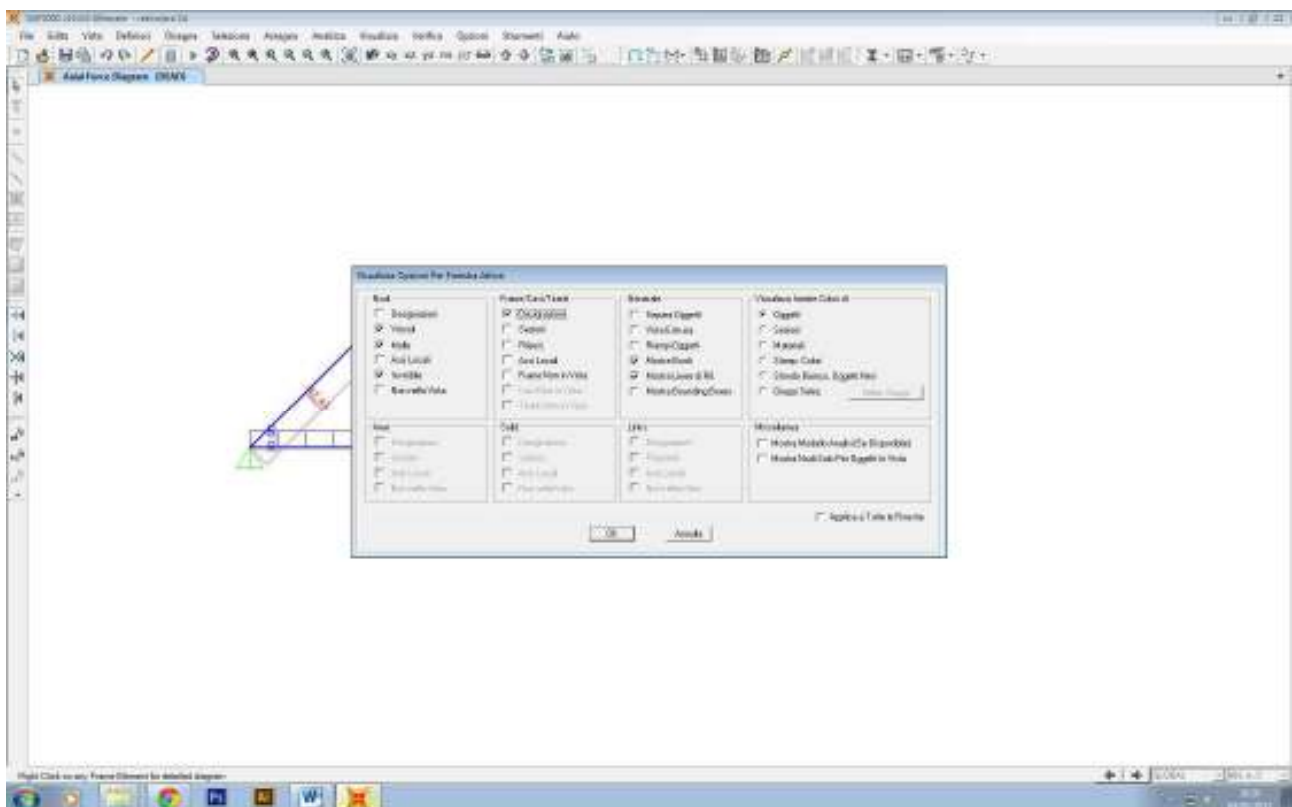


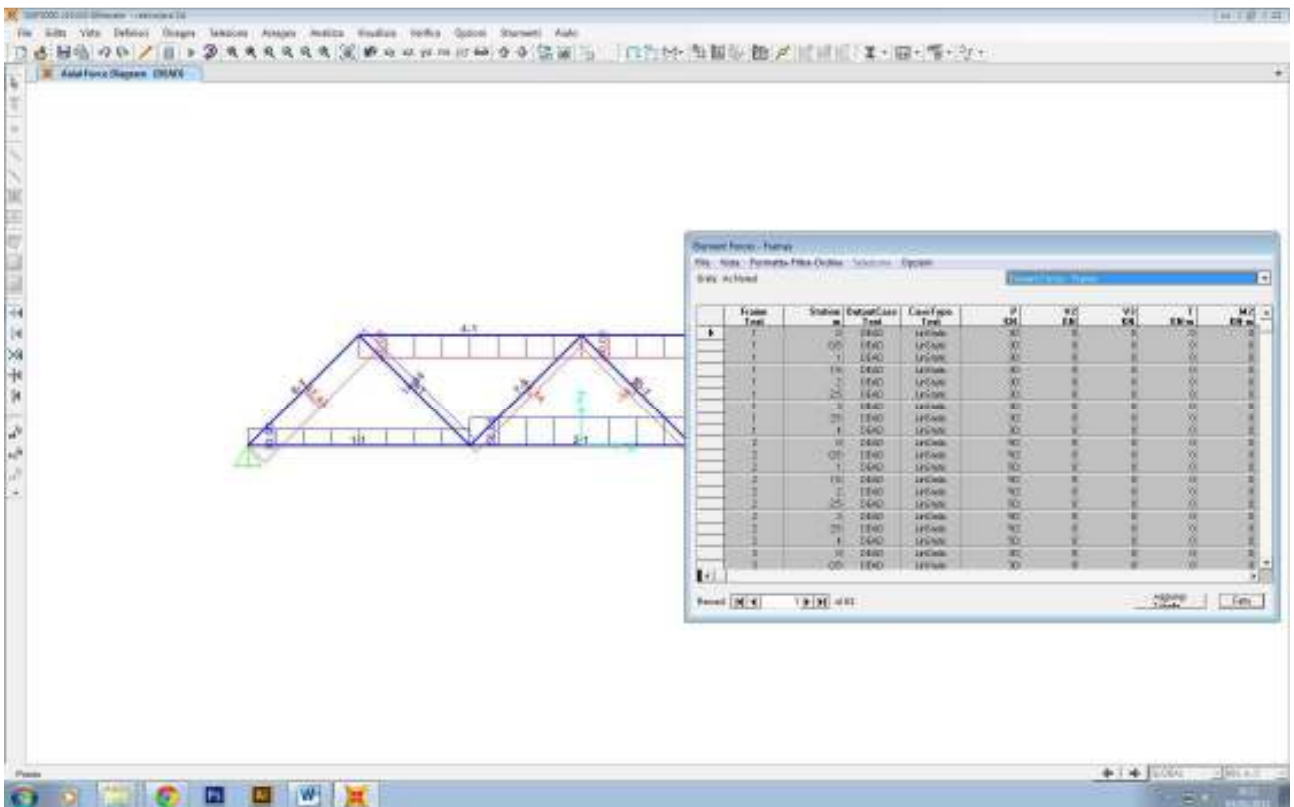
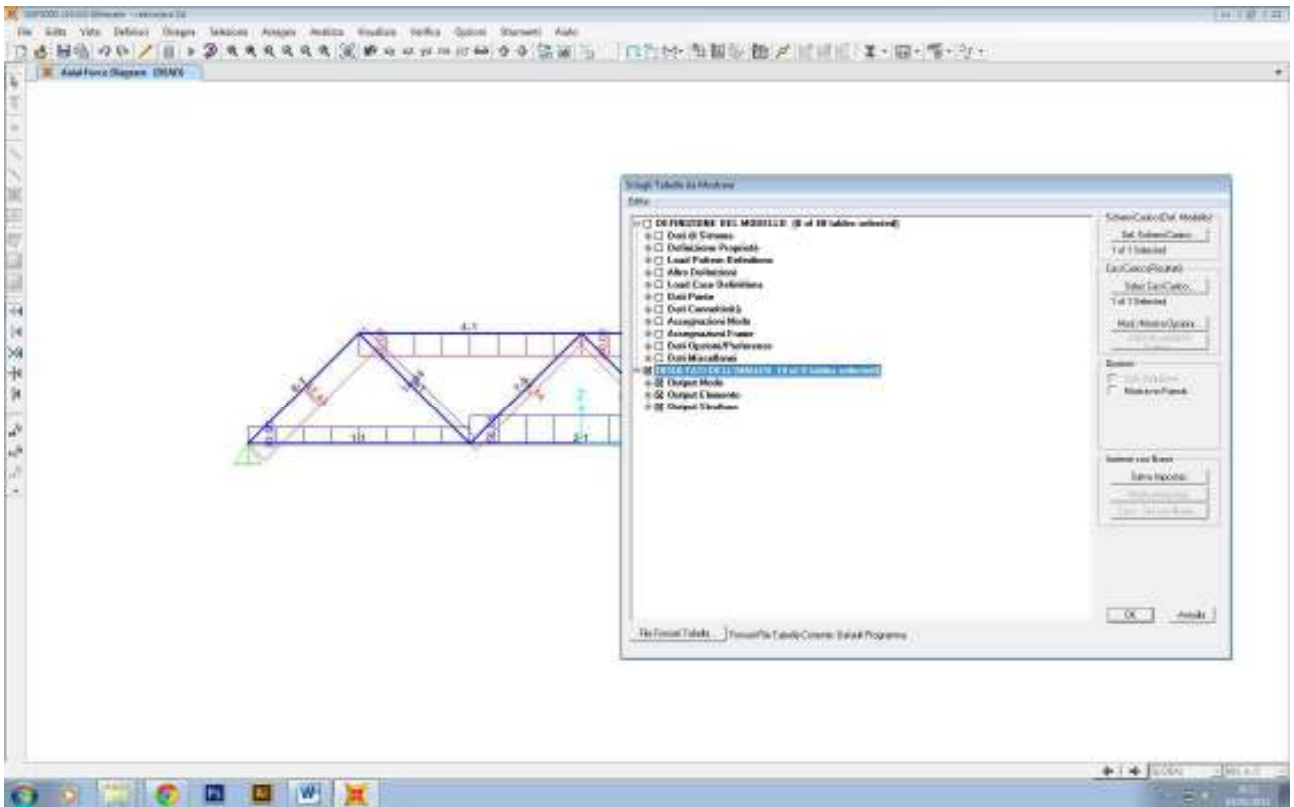


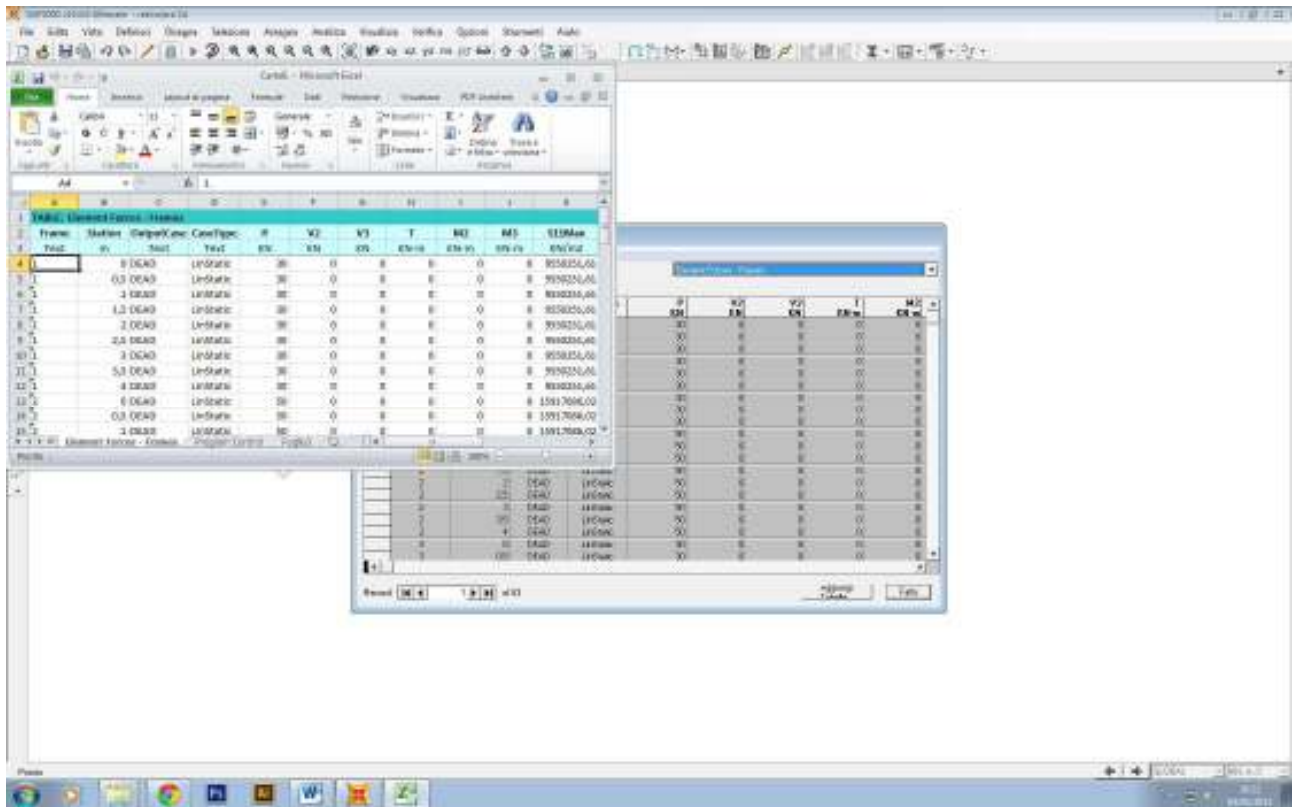
## Diagramma



## Procedura per ottenere la Tabella







E1					
	A	B	C	D	E
1	<b>TABLE: Element Forces - Frames</b>				
2	<b>Frame</b>	<b>Station</b>	<b>P</b>	<b>A</b>	<b><math>\sigma</math></b>
3	Text	m	KN	mm <sup>2</sup>	Mpa
33	4	1	-40	2827	14,14927
34	4	1,5	-40	2827	14,14927
35	4	2	-40	2827	14,14927
36	4	2,5	-40	2827	14,14927
37	4	3	-40	2827	14,14927
38	4	3,5	-40	2827	14,14927
39	4	4	-40	2827	14,14927
40	5	0	-40	2827	14,14927
41	5	0,5	-40	2827	14,14927
42	5	1	-40	2827	14,14927
43	5	1,5	-40	2827	14,14927
44	5	2	-40	2827	14,14927
45	5	2,5	-40	2827	14,14927
46	5	3	-40	2827	14,14927
47	5	3,5	-40	2827	14,14927
48	5	4	-40	2827	14,14927
49	6	0	-42,426	2827	15,00743
50	6	1,41421	-42,426	2827	15,00743
51	6	2,82843	-42,426	2827	15,00743
52	7	0	-14,142	2827	5,002476
53	7	1,41421	-14,142	2827	5,002476
54	7	2,82843	-14,142	2827	5,002476
55	8	0	14,142	2827	5,002476
56	8	1,41421	14,142	2827	5,002476
57	8	2,82843	14,142	2827	5,002476
58	9	0	14,142	2827	5,002476
59	9	1,41421	14,142	2827	5,002476
60	9	2,82843	14,142	2827	5,002476
61	10	0	-14,142	2827	5,002476
62	10	1,41421	-14,142	2827	5,002476
63	10	2,82843	-14,142	2827	5,002476
64	11	0	-42,426	2827	15,00743
65	11	1,41421	-42,426	2827	15,00743
66	11	2,82843	-42,426	2827	15,00743
67					
68					