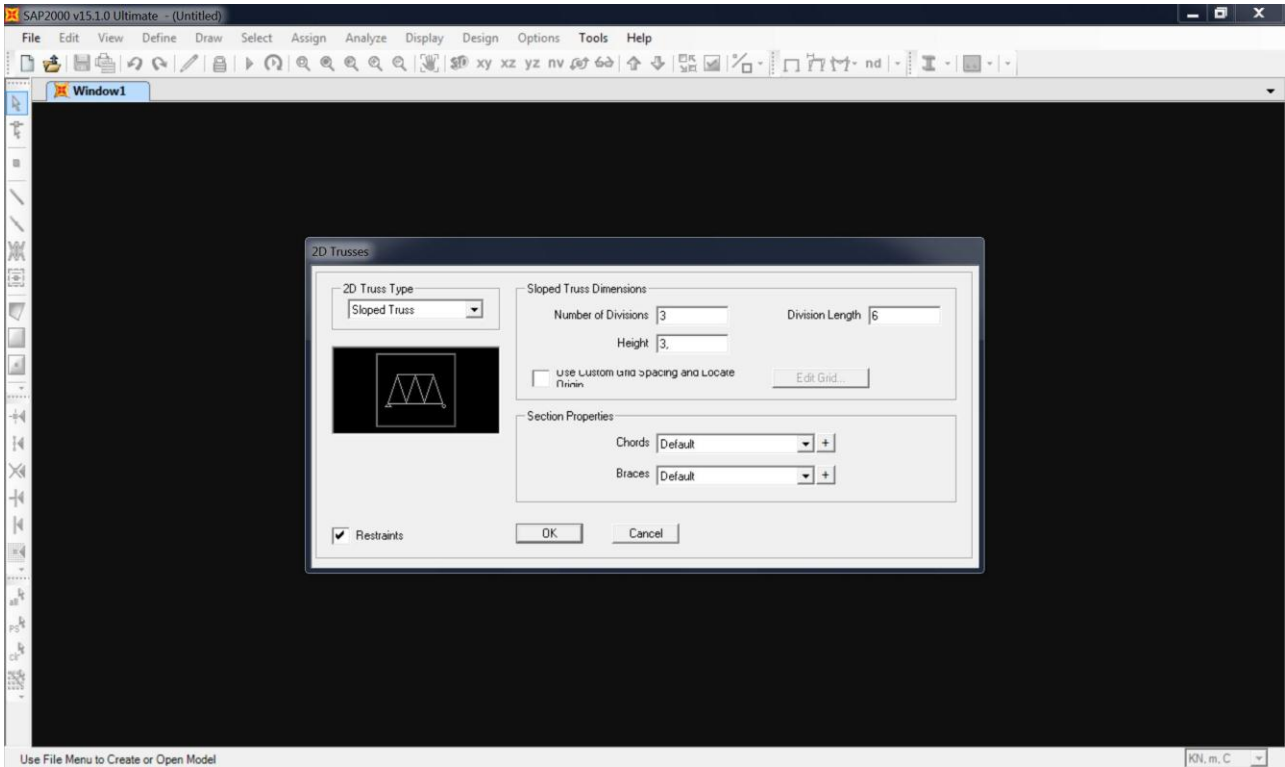
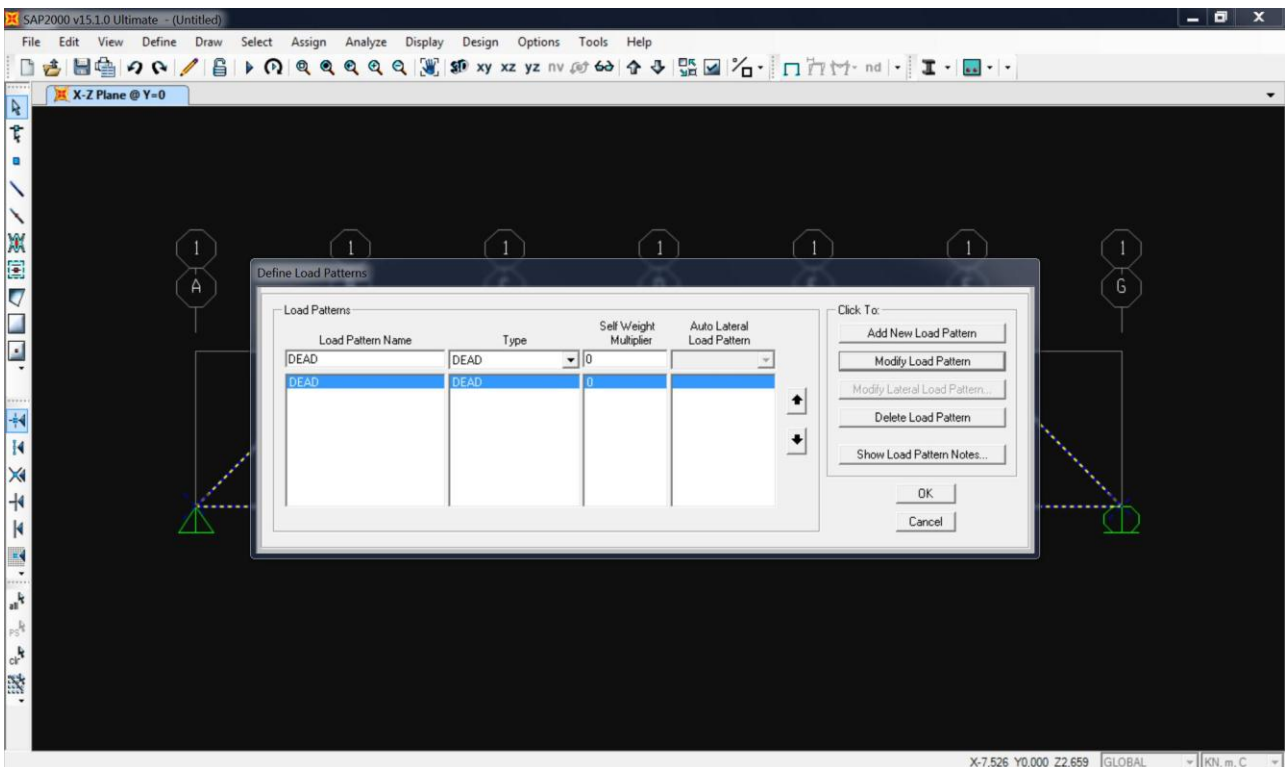


## ESERCITAZIONE 2\_TRAVE RETICOLARE (SAP2000)

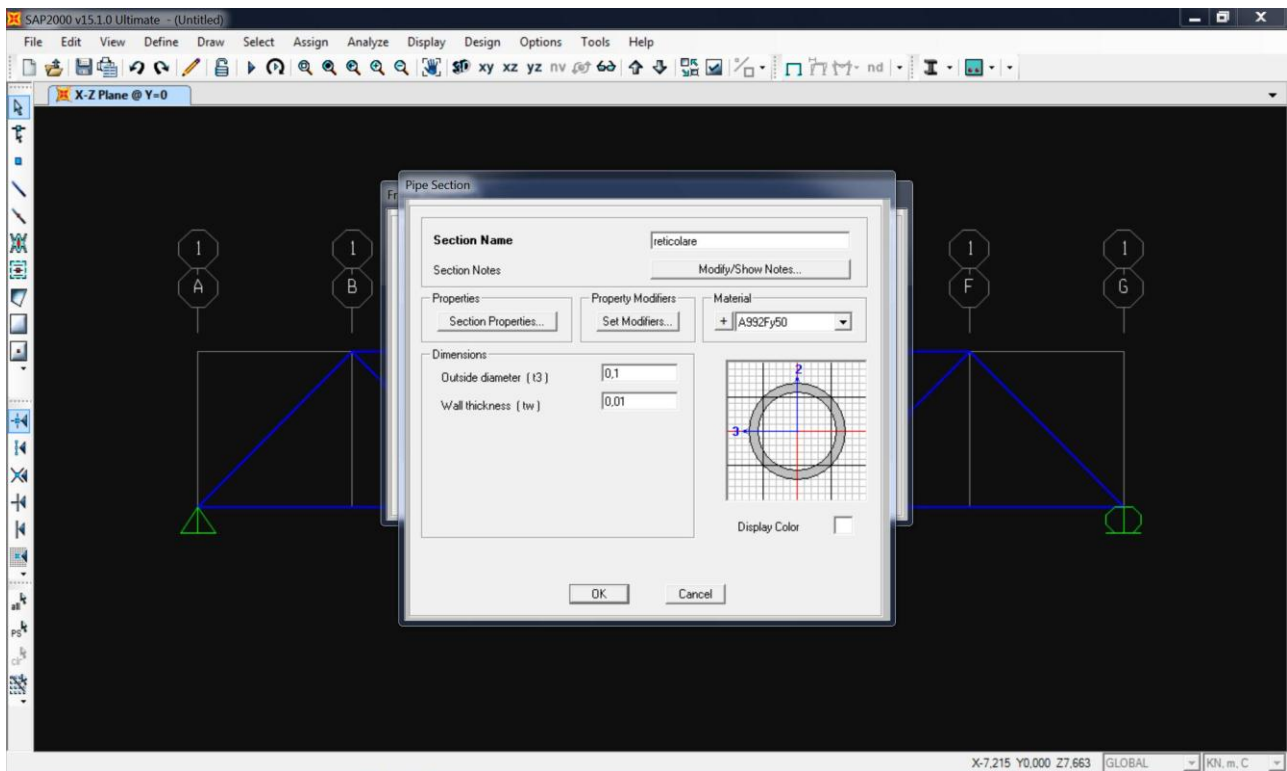
### 1\_ Definisco una trave reticolare (2d Trusses) avente i seguenti parametri



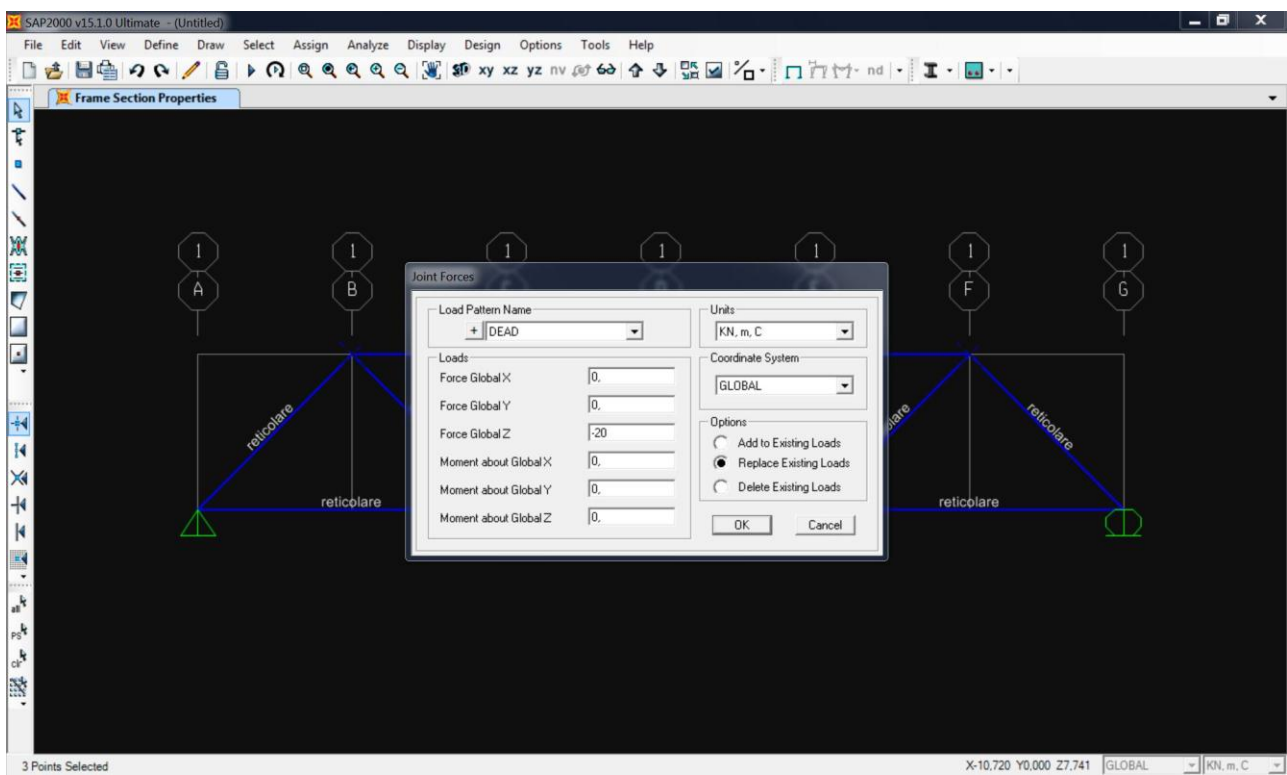
### 2\_ Assegno un carico nullo alla struttura in modo da ottenere solo il calcolo di carichi e forze esterne



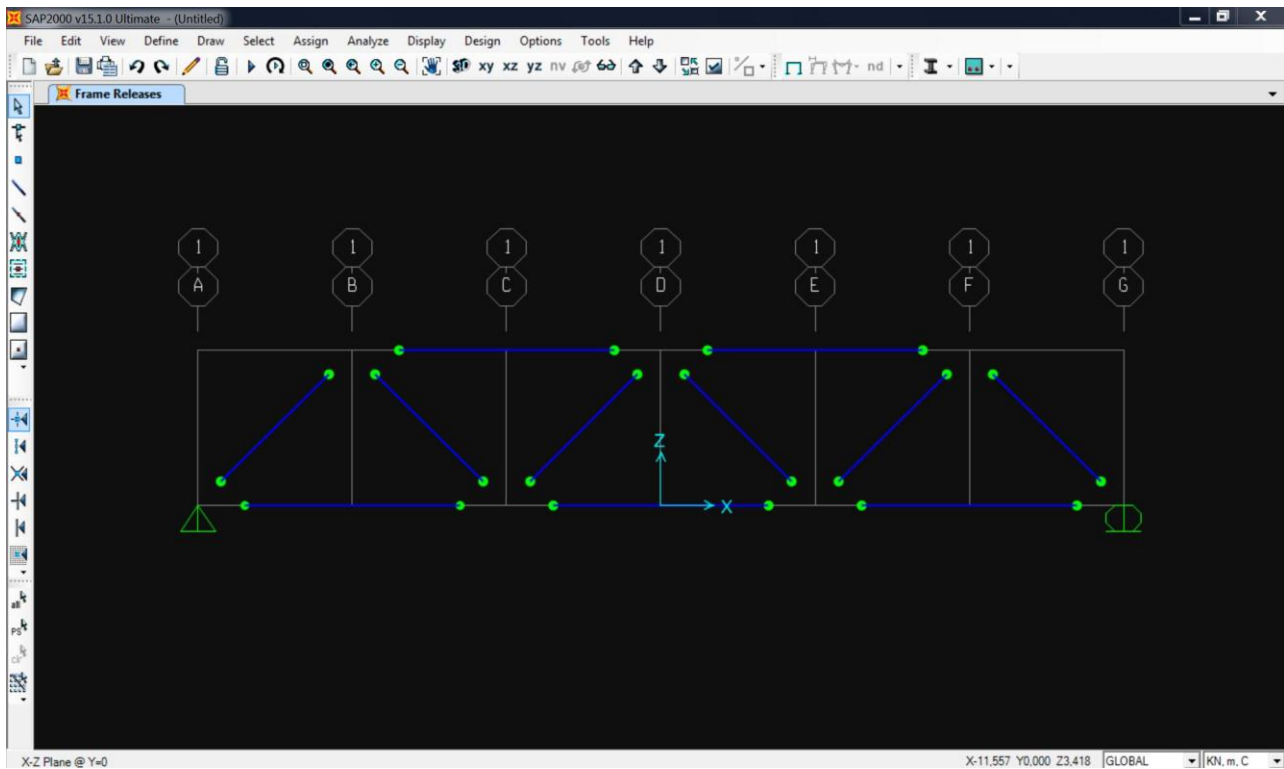
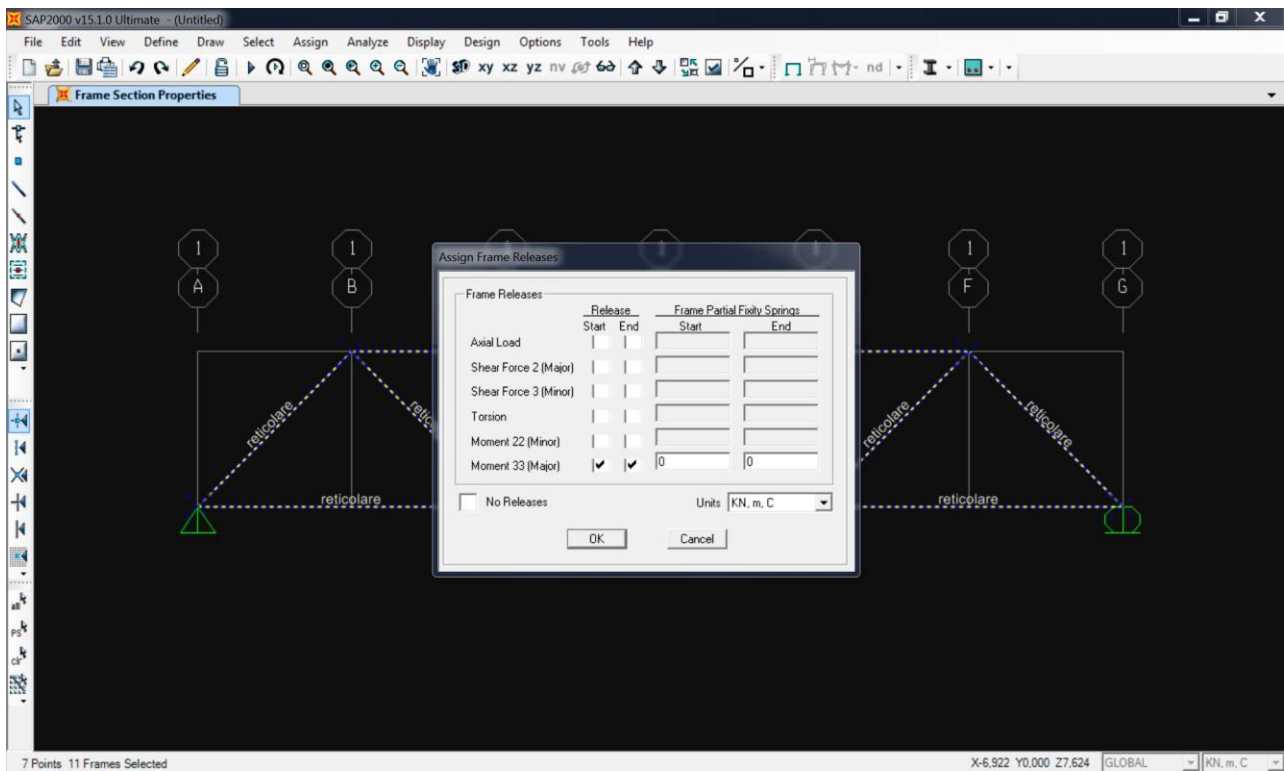
### 3\_ Dopo aver disegnato la trave, definisco la sezione in acciaio



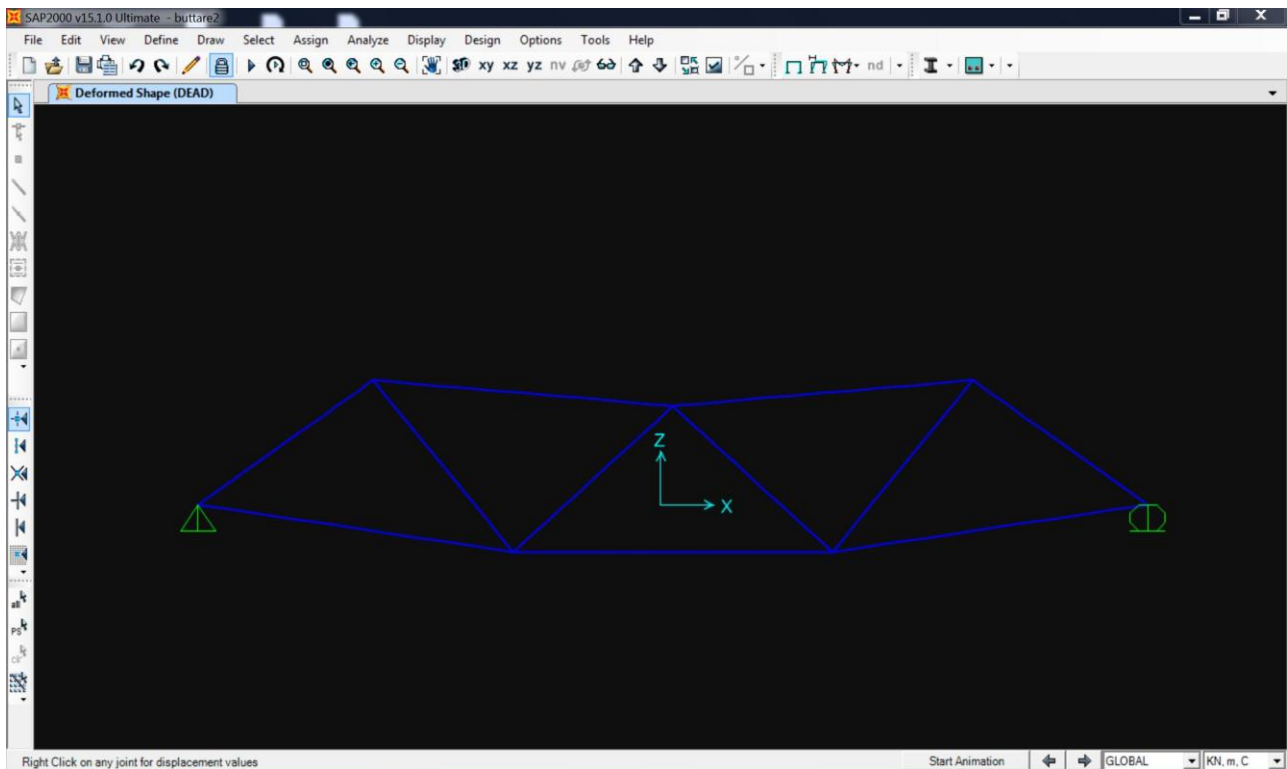
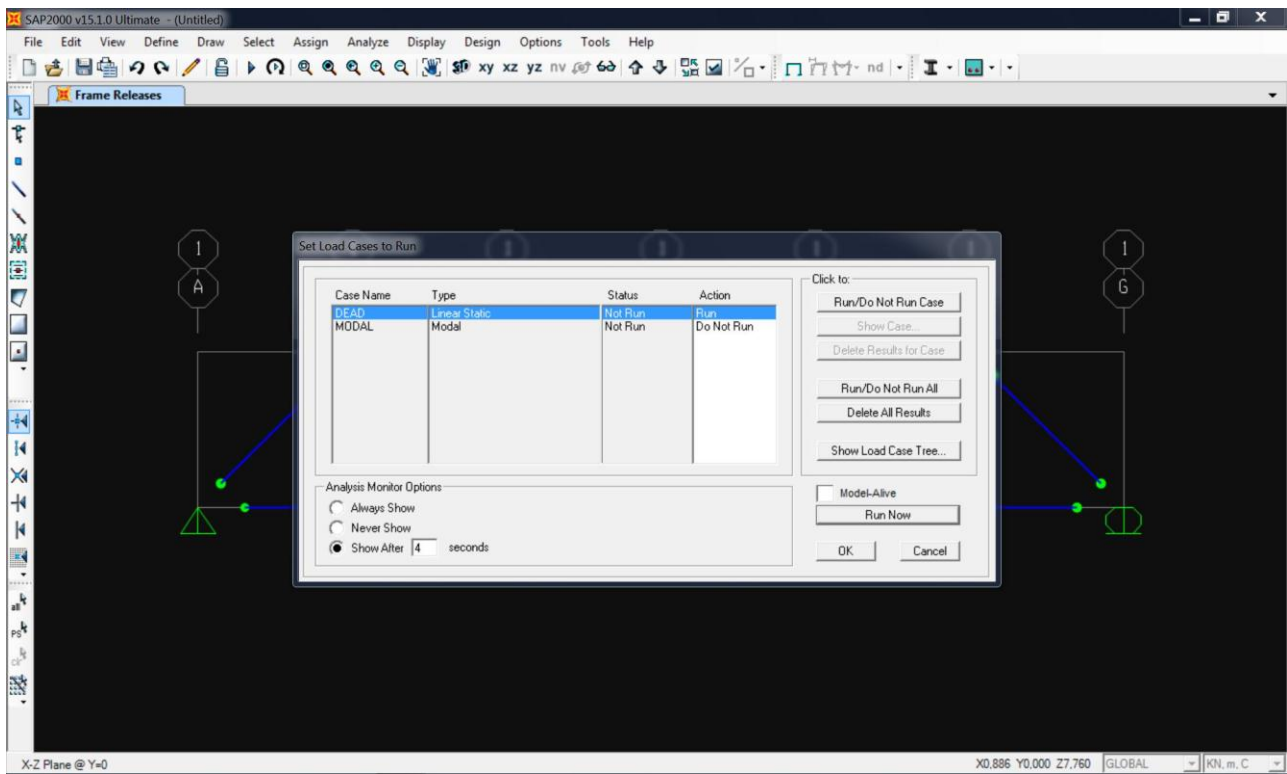
### 4\_ Seleziono i nodi superiori su cui agiscono le forze esterne e assegno un valore di -20 KN



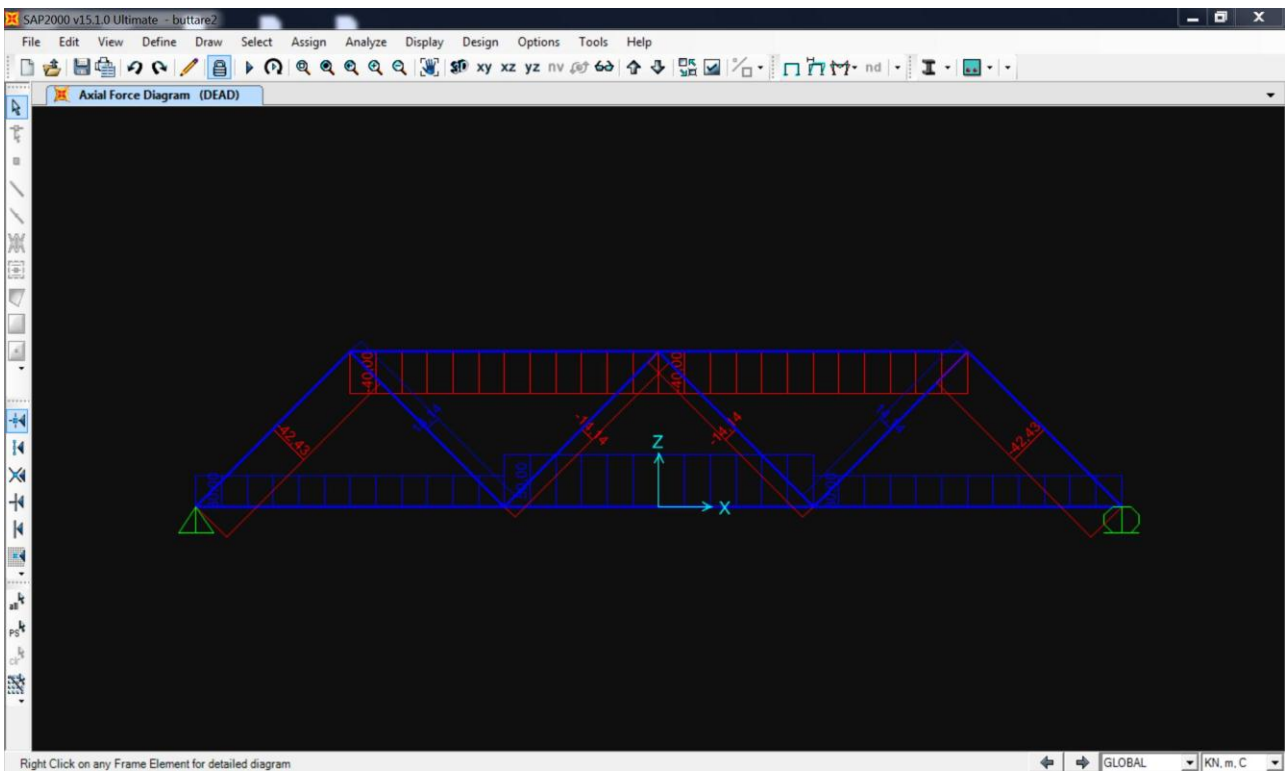
5\_I nodi divengono cerniere interne in cui il momento è nullo (assign\_frame\_releases\_moment 3-3=0-0)



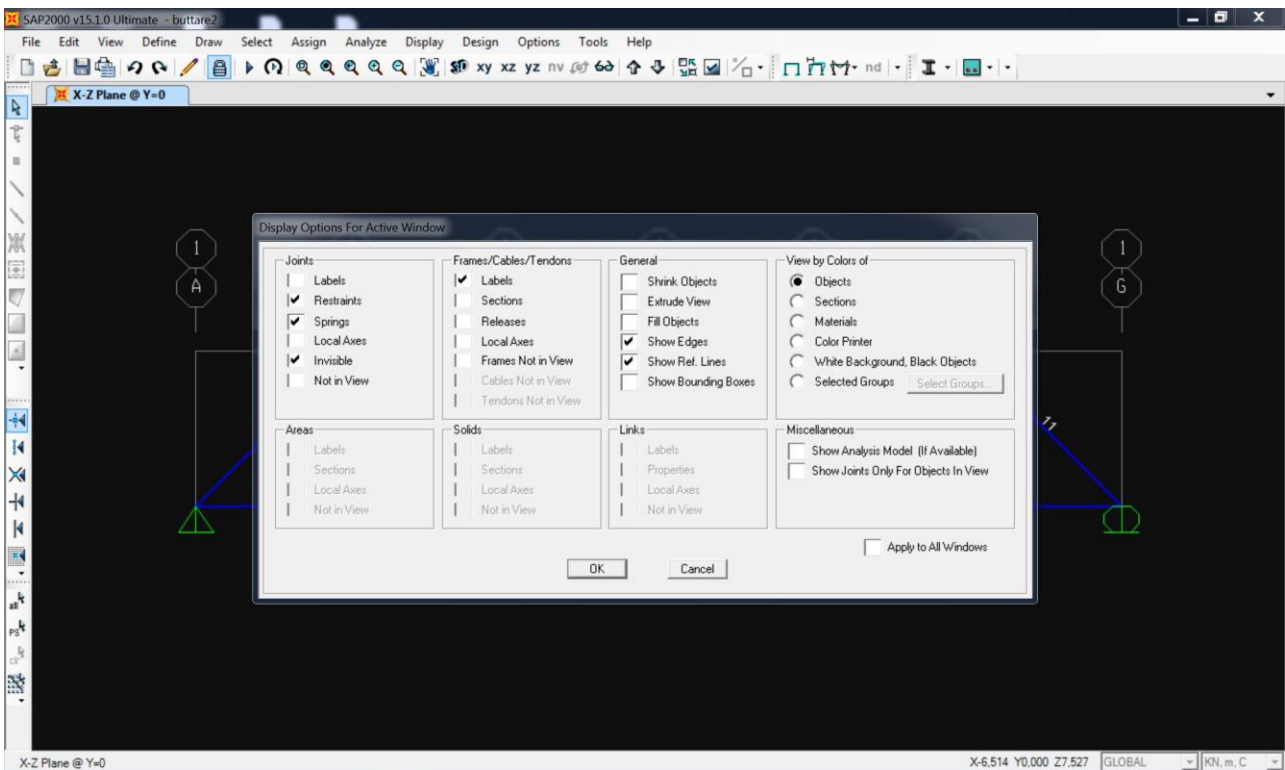
## 6\_ Visualizzo la deformata ottenendo l'analisi della struttura (run)



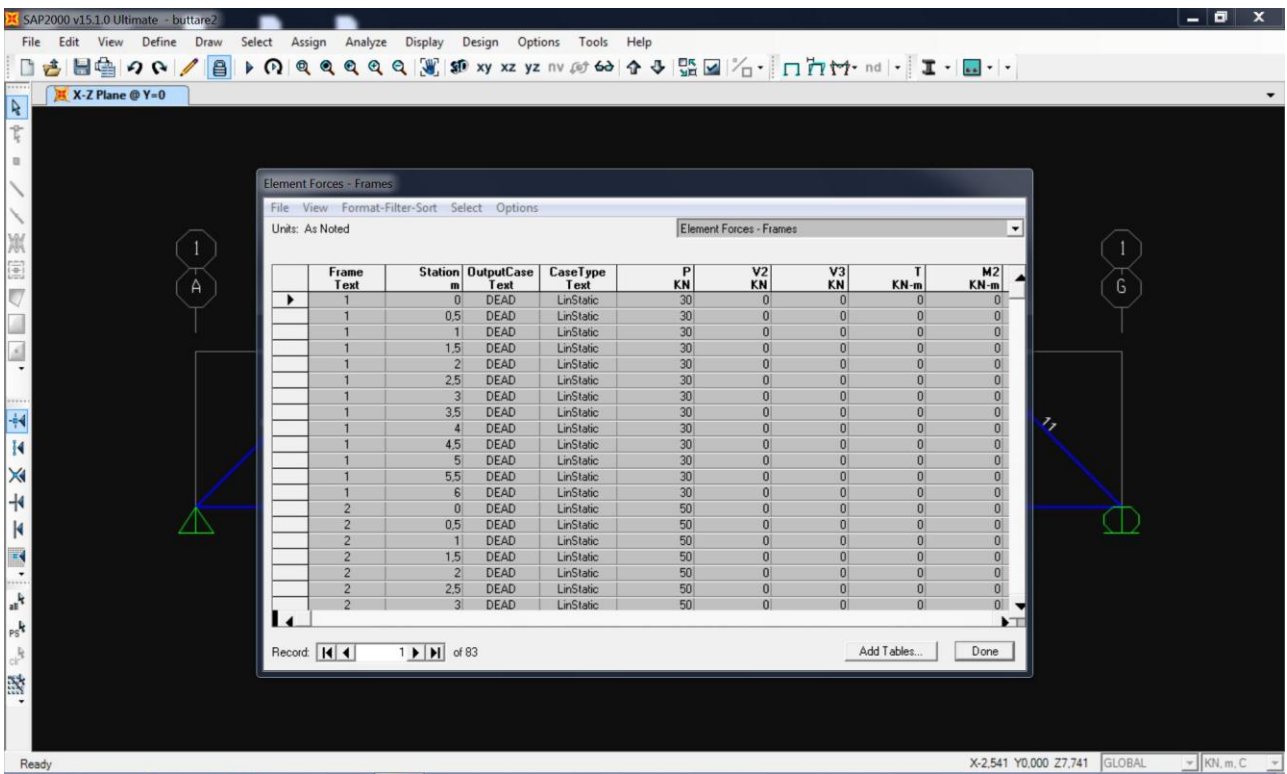
## 7\_ Visualizzo il diagramma dello sforzo assiale con i relativi valori



## 8\_ Assegno un numero alle aste (set display options\_frame\_labels)



9\_Visualizzo le tabelle di analisi (display\_show tables\_analysis results\_element forces-frames)



10\_Esporto la tabella in Excel e metto in evidenza i valori di interesse relativi ad ogni asta

